

SA's Leading Past Year

Exam Paper Portal



You have Downloaded, yet Another Great
Resource to assist you with your Studies 😊

Thank You for Supporting SA Exam Papers

Your Leading Past Year Exam Paper Resource Portal

Visit us @ www.saexampapers.co.za



**SA EXAM
PAPERS**



basic education

Department:
Basic Education
REPUBLIC OF SOUTH AFRICA

NATIONAL SENIOR CERTIFICATE

GRADE 12

MUSIC P1

NOVEMBER 2016

MARKS: 120

TIME: 3 hours

CENTRE NUMBER:

--	--	--	--	--	--	--	--

EXAMINATION NUMBER:

--	--	--	--	--	--	--	--	--	--	--	--	--

This paper consists of 25 pages and 1 manuscript page.

INSTRUCTIONS AND INFORMATION

1. This question paper consists of FIVE sections, namely SECTIONS A, B, C, D and E.
2. SECTIONS A and B are COMPULSORY.
3. SECTION C: WESTERN ART MUSIC (WAM), SECTION D: JAZZ and SECTION E: INDIGENOUS AFRICAN MUSIC (IAM) are choice questions. Answer only ONE of these sections (SECTION C or D or E).
4. Write all music notation in SECTION A in pencil and all written text in blue or black ink on this question paper.
5. Answer SECTION B and SECTION C or D or E in blue or black ink in the ANSWER BOOK provided.
6. Number the answers correctly according to the numbering system used in this question paper.
7. The last page of this question paper is manuscript paper intended for rough work. Candidates may remove this page.
8. Candidates may NOT have access to any musical instrument for the duration of this examination.
9. Candidates must take note of the mark allocation for each question to provide enough information in their answers.
10. Write neatly and legibly.

MARKING GRID

SECTION	QUESTION	MARKS	MARKER	MODERATOR
A: THEORY OF MUSIC (COMPULSORY)	1	20		
	2	15		
	3	10		
	4	15		
SUBTOTAL		60		

AND

B: GENERAL MUSIC KNOWLEDGE (COMPULSORY)	5	20		
SUBTOTAL		20		

AND

C: WAM	6	10		
	7	5		
	8	5		
	9	5		
	10	15		
SUBTOTAL		40		

OR

D: JAZZ	11	10		
	12	5		
	13	5		
	14	5		
	15	15		
SUBTOTAL		40		

OR

E: IAM	16	10		
	17	5		
	18	5		
	19	5		
	20	15		
SUBTOTAL		40		

GRAND TOTAL		120		
--------------------	--	------------	--	--

SECTION A: THEORY OF MUSIC (COMPULSORY)**(90 minutes)**

**Answer QUESTION 1
AND QUESTION 2.1 OR 2.2
AND QUESTION 3.1 OR 3.2
AND QUESTION 4.1 OR 4.2.**

Answer the questions in the spaces provided on this question paper.

QUESTION 1**(25 minutes)**

Study the extract below and answer the questions that follow.

You Needed Me (Extract)

Randy Goodrum

The musical score for 'You Needed Me' (Extract) by Randy Goodrum is presented in 4/4 time and key of D major. The score is divided into measures 1 through 7. The Violoncello part is in the bass clef, and the Piano part is in the treble and bass clefs. The score is divided into measures 1 through 7. Measure 1 is boxed and labeled 1.2.1. Measure 2 is boxed and labeled 1.3.1. Measure 3 is boxed and labeled 1.5. Measure 4 is boxed and labeled 1.3.2. Measure 5 is boxed and labeled 1.4. Measure 6 is boxed and labeled 1.2.2. Measure 7 is boxed and labeled 1.6 etc.

- 1.1 Name the main key of this piece.

(1)

- 1.2 Name the intervals at **1.2.1** and **1.2.2** according to type and distance.

1.2.1 _____

1.2.2 _____

(2)

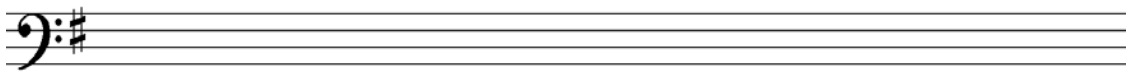
- 1.3 Name the triads at **1.3.1** and **1.3.2** according to type and position/inversion.

1.3.1 _____

1.3.2 _____

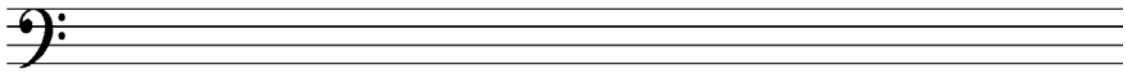
(2)

- 1.4 Rewrite the violoncello part of bar 7 in compound time. Add the new time signature.



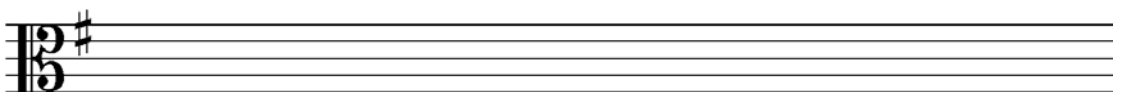
(3)

- 1.5 Transpose the violoncello part of bars 4³–6² a tone (major second) higher. Insert the new key signature.



(3)

- 1.6 Rewrite the bass part of the piano in bar 8 TWO octaves higher in the alto clef.



(1)

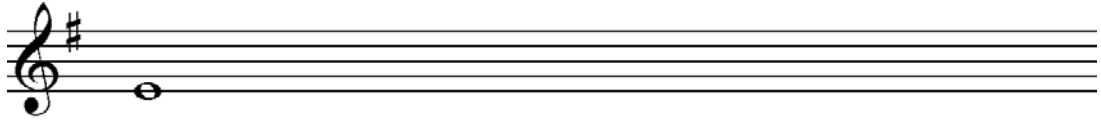
- 1.7 Complete the melodic fragment below by adding TWO ascending sequences.



(2)

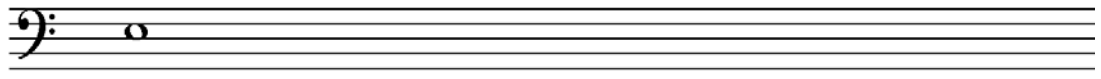
1.8 Write the scales below as indicated.

1.8.1 Complete the ascending chromatic scale starting on the given note.



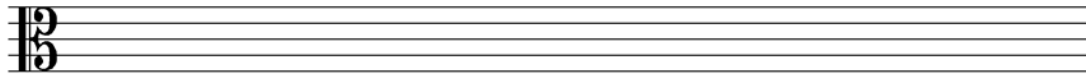
(2)

1.8.2 Complete the ascending Dorian mode starting on E.



(2)

1.8.3 Write B^b melodic minor ascending and descending with key signature. Mark the semitones.



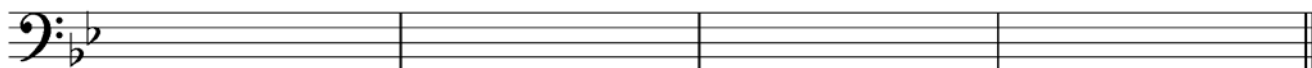
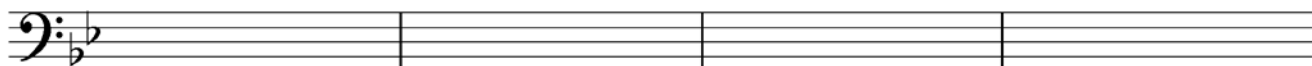
(2)
[20]

QUESTION 2**(25 minutes)****Answer EITHER QUESTION 2.1 OR QUESTION 2.2.**

- 2.1 Complete the opening motif below to form a twelve-bar melody in ternary form for any single-line melodic instrument of your choice. Name the instrument for which you are writing. Indicate the tempo and add dynamic and articulation marks.

Instrument: _____

Tempo: _____



The melody will be marked according to the following criteria:

DESCRIPTION	MARK ALLOCATION	CANDIDATE'S MARKS
Form and cadential points	3	
Correctness Note stems, beats per bar, accidentals, spacing, layout	2	
Quality Suitability, dynamics, articulation, musicality, tempo	10	
TOTAL	15	

[15]**OR**

- 2.2 Complete the opening motif below to form a twelve-bar melody in ternary form for any single-line melodic instrument of your choice. Name the instrument for which you are writing. Indicate the tempo and add dynamic and articulation marks.

Instrument: _____

Tempo: _____



The melody will be marked according to the following criteria:

DESCRIPTION	MARK ALLOCATION	CANDIDATE'S MARKS
Form and cadential points	3	
Correctness Note stems, beats per bar, accidentals, spacing, layout	2	
Quality Suitability, dynamics, articulation, musicality, tempo	10	
TOTAL	15	

[15]

BLANK PAGE

QUESTION 3**(10 minutes)****Answer EITHER QUESTION 3.1 OR QUESTION 3.2.**

- 3.1 Study the extract from Mozart's *Sonata K.283* below and answer the questions that follow.

(a) (b)

Cadence 3.1.3

(c)

5 (i) 3.1.5

(d) (e)

3.1.1 Name the key of this extract.

(1)

3.1.2 Identify chords **(a)** to **(e)** and figure them on the score. Use EITHER figuring below the score, for example V^6 , OR chord symbols, for example B/D^\sharp above the score.

(5)

3.1.3 Name the cadence in bars 3–4.

(1)

3.1.4 Name the type of non-chordal note at **(i)**.

(1)

3.1.5 Circle ALL the passing notes on the score that occur in bar 8 on beats 1 and 2.

(2)

[10]

OR

3.2 Study the extract from *Solitaire* by Neil Sedaka and Philip Cody below and answer the questions that follow.

(a) (b)

(i)

(ii) (iii)

Cadence 3.2.4

(c) (d) (e)

11

3.2.1 Name the key of this extract.

_____ (1)

3.2.2 Identify chords **(a)** to **(e)** and figure them on the score. Use chord symbols above the score, for example B^b/D. (5)

3.2.3 Name the type of non-chordal notes at **(i)** to **(iii)**.

(i) _____

(ii) _____

(iii) _____ (3)

3.2.4 Name the cadence in bars 6–7.

_____ (1)
[10]

QUESTION 4**(30 minutes)****Answer EITHER QUESTION 4.1 OR QUESTION 4.2.**

- 4.1 Complete the four-part vocal harmonisation below by adding the alto, tenor and bass parts.



The harmonisation will be marked according to the following criteria:

DESCRIPTION	MARK ALLOCATION	CANDIDATE'S MARKS
Chord progression Choice of chords, correct use of cadence	14	
Correctness Notation, doubling, spacing, voice leading	16	
Quality Musicality, non-chordal notes, awareness of style, creativity	10	
	40 (÷ 8 x 3)	
TOTAL	15	

[15]**OR**

- 4.2 Complete the piece below by adding a suitable bass line and harmonic material in the open staves. Continue in the style suggested by the given material in bars 1–3.

The image displays a musical score for the song "The Sound of Silence" by Simon & Garfunkel. It consists of three staves: Melody, Chords, and Bass, all in 4/4 time. The Melody staff is in treble clef, the Chords staff is in treble clef, and the Bass staff is in bass clef. The key signature is one flat (B-flat). The Melody staff includes a series of chords written above the notes: C⁷, C⁷/E, A⁷, A⁷/C[#], D⁷, and G⁷. The Chords staff shows the corresponding chord voicings. The Bass staff provides the harmonic foundation with a steady rhythm.

5

Musical score for 'The Rose Tree' in 3/4 time. The score is written for three staves: Treble, Alto, and Bass. The Treble staff contains the melody, starting with a treble clef and a key signature of one sharp (F#). The melody consists of the following notes: G4 (quarter), A4-B4 (eighth pair), C5 (quarter), D5 (quarter), E5 (quarter), F#5 (quarter), G5 (quarter), A5-B5 (eighth pair), C6 (quarter), D6 (quarter), E6 (quarter), F#6 (quarter), G6 (quarter), A6-B6 (eighth pair), C7 (quarter), D7 (quarter), E7 (quarter), F#7 (quarter), G7 (quarter), A7-B7 (eighth pair), C8 (quarter), D8 (quarter), E8 (quarter), F#8 (quarter), G8 (quarter), A8-B8 (eighth pair), C9 (quarter), D9 (quarter), E9 (quarter), F#9 (quarter), G9 (quarter), A9-B9 (eighth pair), C10 (quarter), D10 (quarter), E10 (quarter), F#10 (quarter), G10 (quarter), A10-B10 (eighth pair), C11 (quarter), D11 (quarter), E11 (quarter), F#11 (quarter), G11 (quarter), A11-B11 (eighth pair), C12 (quarter), D12 (quarter), E12 (quarter), F#12 (quarter), G12 (quarter), A12-B12 (eighth pair), C13 (quarter), D13 (quarter), E13 (quarter), F#13 (quarter), G13 (quarter), A13-B13 (eighth pair), C14 (quarter), D14 (quarter), E14 (quarter), F#14 (quarter), G14 (quarter), A14-B14 (eighth pair), C15 (quarter), D15 (quarter), E15 (quarter), F#15 (quarter), G15 (quarter), A15-B15 (eighth pair), C16 (quarter), D16 (quarter), E16 (quarter), F#16 (quarter), G16 (quarter), A16-B16 (eighth pair), C17 (quarter), D17 (quarter), E17 (quarter), F#17 (quarter), G17 (quarter), A17-B17 (eighth pair), C18 (quarter), D18 (quarter), E18 (quarter), F#18 (quarter), G18 (quarter), A18-B18 (eighth pair), C19 (quarter), D19 (quarter), E19 (quarter), F#19 (quarter), G19 (quarter), A19-B19 (eighth pair), C20 (quarter), D20 (quarter), E20 (quarter), F#20 (quarter), G20 (quarter), A20-B20 (eighth pair), C21 (quarter), D21 (quarter), E21 (quarter), F#21 (quarter), G21 (quarter), A21-B21 (eighth pair), C22 (quarter), D22 (quarter), E22 (quarter), F#22 (quarter), G22 (quarter), A22-B22 (eighth pair), C23 (quarter), D23 (quarter), E23 (quarter), F#23 (quarter), G23 (quarter), A23-B23 (eighth pair), C24 (quarter), D24 (quarter), E24 (quarter), F#24 (quarter), G24 (quarter), A24-B24 (eighth pair), C25 (quarter), D25 (quarter), E25 (quarter), F#25 (quarter), G25 (quarter), A25-B25 (eighth pair), C26 (quarter), D26 (quarter), E26 (quarter), F#26 (quarter), G26 (quarter), A26-B26 (eighth pair), C27 (quarter), D27 (quarter), E27 (quarter), F#27 (quarter), G27 (quarter), A27-B27 (eighth pair), C28 (quarter), D28 (quarter), E28 (quarter), F#28 (quarter), G28 (quarter), A28-B28 (eighth pair), C29 (quarter), D29 (quarter), E29 (quarter), F#29 (quarter), G29 (quarter), A29-B29 (eighth pair), C30 (quarter), D30 (quarter), E30 (quarter), F#30 (quarter), G30 (quarter), A30-B30 (eighth pair), C31 (quarter), D31 (quarter), E31 (quarter), F#31 (quarter), G31 (quarter), A31-B31 (eighth pair), C32 (quarter), D32 (quarter), E32 (quarter), F#32 (quarter), G32 (quarter), A32-B32 (eighth pair), C33 (quarter), D33 (quarter), E33 (quarter), F#33 (quarter), G33 (quarter), A33-B33 (eighth pair), C34 (quarter), D34 (quarter), E34 (quarter), F#34 (quarter), G34 (quarter), A34-B34 (eighth pair), C35 (quarter), D35 (quarter), E35 (quarter), F#35 (quarter), G35 (quarter), A35-B35 (eighth pair), C36 (quarter), D36 (quarter), E36 (quarter), F#36 (quarter), G36 (quarter), A36-B36 (eighth pair), C37 (quarter), D37 (quarter), E37 (quarter), F#37 (quarter), G37 (quarter), A37-B37 (eighth pair), C38 (quarter), D38 (quarter), E38 (quarter), F#38 (quarter), G38 (quarter), A38-B38 (eighth pair), C39 (quarter), D39 (quarter), E39 (quarter), F#39 (quarter), G39 (quarter), A39-B39 (eighth pair), C40 (quarter), D40 (quarter), E40 (quarter), F#40 (quarter), G40 (quarter), A40-B40 (eighth pair), C41 (quarter), D41 (quarter), E41 (quarter), F#41 (quarter), G41 (quarter), A41-B41 (eighth pair), C42 (quarter), D42 (quarter), E42 (quarter), F#42 (quarter), G42 (quarter), A42-B42 (eighth pair), C43 (quarter), D43 (quarter), E43 (quarter), F#43 (quarter), G43 (quarter), A43-B43 (eighth pair), C44 (quarter), D44 (quarter), E44 (quarter), F#44 (quarter), G44 (quarter), A44-B44 (eighth pair), C45 (quarter), D45 (quarter), E45 (quarter), F#45 (quarter), G45 (quarter), A45-B45 (eighth pair), C46 (quarter), D46 (quarter), E46 (quarter), F#46 (quarter), G46 (quarter), A46-B46 (eighth pair), C47 (quarter), D47 (quarter), E47 (quarter), F#47 (quarter), G47 (quarter), A47-B47 (eighth pair), C48 (quarter), D48 (quarter), E48 (quarter), F#48 (quarter), G48 (quarter), A48-B48 (eighth pair), C49 (quarter), D49 (quarter), E49 (quarter), F#49 (quarter), G49 (quarter), A49-B49 (eighth pair), C50 (quarter), D50 (quarter), E50 (quarter), F#50 (quarter), G50 (quarter), A50-B50 (eighth pair), C51 (quarter), D51 (quarter), E51 (quarter), F#51 (quarter), G51 (quarter), A51-B51 (eighth pair), C52 (quarter), D52 (quarter), E52 (quarter), F#52 (quarter), G52 (quarter), A52-B52 (eighth pair), C53 (quarter), D53 (quarter), E53 (quarter), F#53 (quarter), G53 (quarter), A53-B53 (eighth pair), C54 (quarter), D54 (quarter), E54 (quarter), F#54 (quarter), G54 (quarter), A54-B54 (eighth pair), C55 (quarter), D55 (quarter), E55 (quarter), F#55 (quarter), G55 (quarter), A55-B55 (eighth pair), C56 (quarter), D56 (quarter), E56 (quarter), F#56 (quarter), G56 (quarter), A56-B56 (eighth pair), C57 (quarter), D57 (quarter), E57 (quarter), F#57 (quarter), G57 (quarter), A57-B57 (eighth pair), C58 (quarter), D58 (quarter), E58 (quarter), F#58 (quarter), G58 (quarter), A58-B58 (eighth pair), C59 (quarter), D59 (quarter), E59 (quarter), F#59 (quarter), G59 (quarter), A59-B59 (eighth pair), C60 (quarter), D60 (quarter), E60 (quarter), F#60 (quarter), G60 (quarter), A60-B60 (eighth pair), C61 (quarter), D61 (quarter), E61 (quarter), F#61 (quarter), G61 (quarter), A61-B61 (eighth pair), C62 (quarter), D62 (quarter), E62 (quarter), F#62 (quarter), G62 (quarter), A62-B62 (eighth pair), C63 (quarter), D63 (quarter), E63 (quarter), F#63 (quarter), G63 (quarter), A63-B63 (eighth pair), C64 (quarter), D64 (quarter), E64 (quarter), F#64 (quarter), G64 (quarter), A64-B64 (eighth pair), C65 (quarter), D65 (quarter), E65 (quarter), F#65 (quarter), G65 (quarter), A65-B65 (eighth pair), C66 (quarter), D66 (quarter), E66 (quarter), F#66 (quarter), G66 (quarter), A66-B66 (eighth pair), C67 (quarter), D67 (quarter), E67 (quarter), F#67 (quarter), G67 (quarter), A67-B67 (eighth pair), C68 (quarter), D68 (quarter), E68 (quarter), F#68 (quarter), G68 (quarter), A68-B68 (eighth pair), C69 (quarter), D69 (quarter), E69 (quarter), F#69 (quarter), G69 (quarter), A69-B69 (eighth pair), C70 (quarter), D70 (quarter), E70 (quarter), F#70 (quarter), G70 (quarter), A70-B70 (eighth pair), C71 (quarter), D71 (quarter), E71 (quarter), F#71 (quarter), G71 (quarter), A71-B71 (eighth pair), C72 (quarter), D72 (quarter), E72 (quarter), F#72 (quarter), G72 (quarter), A72-B72 (eighth pair), C73 (quarter), D73 (quarter), E73 (quarter), F#73 (quarter), G73 (quarter), A73-B73 (eighth pair), C74 (quarter), D74 (quarter), E74 (quarter), F#74 (quarter), G74 (quarter), A74-B74 (eighth pair), C75 (quarter), D75 (quarter), E75 (quarter), F#75 (quarter), G75 (quarter), A75-B75 (eighth pair), C76 (quarter), D76 (quarter), E76 (quarter), F#76 (quarter), G76 (quarter), A76-B76 (eighth pair), C77 (quarter), D77 (quarter), E77 (quarter), F#77 (quarter), G77 (quarter), A77-B77 (eighth pair), C78 (quarter), D78 (quarter), E78 (quarter), F#78 (quarter), G78 (quarter), A78-B78 (eighth pair), C79 (quarter), D79 (quarter), E79 (quarter), F#79 (quarter), G79 (quarter), A79-B79 (eighth pair), C80 (quarter), D80 (quarter), E80 (quarter), F#80 (quarter), G80 (quarter), A80-B80 (eighth pair), C81 (quarter), D81 (quarter), E81 (quarter), F#81 (quarter), G81 (quarter), A81-B81 (eighth pair), C82 (quarter), D82 (quarter), E82 (quarter), F#82 (quarter), G82 (quarter), A82-B82 (eighth pair), C83 (quarter), D83 (quarter), E83 (quarter), F#83 (quarter), G83 (quarter), A83-B83 (eighth pair), C84 (quarter), D84 (quarter), E84 (quarter), F#84 (quarter), G84 (quarter), A84-B84 (eighth pair), C85 (quarter), D85 (quarter), E85 (quarter), F#85 (quarter), G85 (quarter), A85-B85 (eighth pair), C86 (quarter), D86 (quarter), E86 (quarter), F#86 (quarter), G86 (quarter), A86-B86 (eighth pair), C87 (quarter), D87 (quarter), E87 (quarter), F#87 (quarter), G87 (quarter), A87-B87 (eighth pair), C88 (quarter), D88 (quarter), E88 (quarter), F#88 (quarter), G88 (quarter), A88-B88 (eighth pair), C89 (quarter), D89 (quarter), E89 (quarter), F#89 (quarter), G89 (quarter), A89-B89 (eighth pair), C90 (quarter), D90 (quarter), E90 (quarter), F#90 (quarter), G90 (quarter), A90-B90 (eighth pair), C91 (quarter), D91 (quarter), E91 (quarter), F#91 (quarter), G91 (quarter), A91-B91 (eighth pair), C92 (quarter), D92 (quarter), E92 (quarter), F#92 (quarter), G92 (quarter), A92-B92 (eighth pair), C93 (quarter), D93 (quarter), E93 (quarter), F#93 (quarter), G93 (quarter), A93-B93 (eighth pair), C94 (quarter), D94 (quarter), E94 (quarter), F#94 (quarter), G94 (quarter), A94-B94 (eighth pair), C95 (quarter), D95 (quarter), E95 (quarter), F#95 (quarter), G95 (quarter), A95-B95 (eighth pair), C96 (quarter), D96 (quarter), E96 (quarter), F#96 (quarter), G96 (quarter), A96-B96 (eighth pair), C97 (quarter), D97 (quarter), E97 (quarter), F#97 (quarter), G97 (quarter), A97-B97 (eighth pair), C98 (quarter), D98 (quarter), E98 (quarter), F#98 (quarter), G98 (quarter), A98-B98 (eighth pair), C99 (quarter), D99 (quarter), E99 (quarter), F#99 (quarter), G99 (quarter), A99-B99 (eighth pair), C100 (quarter), D100 (quarter), E100 (quarter), F#100 (quarter), G100 (quarter), A

9

Musical score for 'The Rose Tree' in G major, 3/4 time. The score is written for three staves: Treble, Middle, and Bass. The Treble staff contains the melody, while the Middle and Bass staves are empty. The melody consists of two measures. The first measure contains a quarter note G4, an eighth note A4, a quarter note B4, and a quarter rest. The second measure contains a quarter note C5, a quarter note B4, a quarter note A4, a quarter note G4, a quarter note F#4, a quarter note E4, and a quarter rest. The score ends with a double bar line.

The answer will be marked according to the following criteria:

DESCRIPTION	MARK ALLOCATION	CANDIDATE'S MARKS
Chord progression Choice of chords; correct use of cadences	15	
Correctness Notation, doubling, spacing, voice leading	15	
Quality Musicality, non-chordal notes, awareness of style, creativity	10	
	40 (÷ 8 x 3)	
TOTAL	15	

[15]

TOTAL SECTION A: 60

SECTIONS B, C, D, E: GENERAL MUSIC KNOWLEDGE**(90 minutes)****Answer SECTION B****AND SECTION C (Western Art Music)****OR SECTION D (Jazz)****OR SECTION E (Indigenous African Music).**

Answer these questions in the ANSWER BOOK provided.

SECTION B: GENERAL (COMPULSORY)**QUESTION 5**

- 5.1 Various options are provided as possible answers to the following questions. Write down the question number (5.1.1–5.1.10), choose the answer and make a cross (X) over the letter (A–D) of your choice in the ANSWER BOOK.

EXAMPLE:

5.1.11

A

B

C

D

5.1.1 Presto is the ...

- A German word for fast.
- B Italian word for fast.
- C Italian word for lively.
- D German word for lively.

5.1.2 The term falsetto refers to a ...

- A female voice singing fast runs and melismas.
- B woodwind instrument playing high-pitched notes.
- C male voice singing in the female voice range.
- D woodwind instrument playing out of tune.

5.1.3 A chordophone is any instrument ...

- A that produces sound generated by a stretched string.
- B where the sound is generated by its own material.
- C of which the sound is generated by a membrane.
- D on which chords can be played.

5.1.4 Which term below describes the repetition of a melody or idea at a different pitch?

- A Augmentation
- B Diminution
- C Inversion
- D Sequence

5.1.5 Which ONE of the following terms is NOT a texture type?

- A Monophonic
- B Polyphonic
- C Stereophonic
- D Homophonic

5.1.6 To which ONE of the following does binary term refer?

- A AB
- B ABACA
- C ABA
- D ABCBA

5.1.7 Which ONE of the statements below is CORRECT about transposing instruments?

- A A flute sounds an octave higher than the written part.
- B A double bass sounds an octave lower than the written part.
- C A guitar sounds an octave higher than the written part.
- D A trumpet sounds a major third lower than the written part.

5.1.8 Which ONE of the following is a woodwind instrument?

- A Euphonium
- B Cor anglais (English horn)
- C Trumpet
- D French horn

5.1.9 Tempo giusto means ...

- A a free tempo.
- B a lively tempo.
- C increasing the tempo instantly.
- D strict tempo.

5.1.10



The little note must be played ...

- A with extra force.
- B according to the player's choice.
- C as quickly as possible.
- D with half the value of the note that follows it.

(10 x 1) (10)

- 5.2 Briefly describe the functions of SAMRO. (4)
- 5.3 Copyright gives the copyright owner exclusive rights regarding the use of his/her music.
- Elaborate on this statement. (4)
- 5.4 Define the following terms:
- 5.4.1 Needletime rights royalties (1)
- 5.4.2 Mechanical rights royalties (1)
- TOTAL SECTION B: 20**

**Answer SECTION C (WAM)
OR SECTION D (JAZZ)
OR SECTION E (IAM).**

SECTION C: WESTERN ART MUSIC (WAM)

QUESTION 6

6.1 Describe the following terms with regard to form:

6.1.1 Minuet and trio (2)

6.1.2 Rondo (2)

6.1.3 Development (2)

6.1.4 First subject/theme (2)

6.2 A symphonic poem is based on programmatic content.

Explain the meaning of this statement. (2)
[10]

QUESTION 7

Discuss the importance of the Mannheim orchestra. **[5]**

QUESTION 8

Write a paragraph in which you define the genre of Mendelssohn's *Hebrides Overture*.
Briefly describe the form of the work and discuss the importance of the title. **[5]**

QUESTION 9

Study the extract below from the *Pastoral Symphony* by Beethoven. Write a paragraph on the movement in which the extract occurs.

**[5]****QUESTION 10**

Mozart perfected the aria as a genre in his opera *The Magic Flute*.

Elaborate on this statement. Define the *aria* as a genre and discuss TWO arias sung by different characters in *The Magic Flute*.

You will be credited for the logical presentation of facts and the structure of your essay.

The essay will be marked according to the following criteria:

CRITERIA	MARK ALLOCATION
Definition of an aria	2
Aria 1	5
Aria 2	5
Logical presentation and structure of the essay	3
TOTAL	15

[15]**TOTAL SECTION C: 40****OR**

SECTION D: JAZZ**QUESTION 11**

- 11.1 Choose the jazz classification from COLUMN B that matches the artist/group in COLUMN A. Write only the letter (A–F) next to the question number (11.1.1–11.1.6) in the ANSWER BOOK, for example 11.1.7 G.

COLUMN A		COLUMN B	
11.1.1	The Flying Jazz Queens	A	modern jazz
11.1.2	Lemmy Mabaso	B	mbaqanga
11.1.3	Makgonatsohle Band	C	kwela
11.1.4	Voice	D	Cape jazz
11.1.5	Dollar Brand	E	marabi
11.1.6	Union of South Africa	F	jazz in exile

(6 x 1)

(6)

- 11.2 Name ONE important contribution to South African jazz made by EACH of the following artists:

11.2.1 Zim Nqawana (1)

11.2.2 The Jazz Epistles (1)

11.2.3 Miriam Makeba (1)

11.2.4 Chris MacGregor (1)

[10]**QUESTION 12**

Write a paragraph in which you describe kwela. Also briefly explain its role in the development of South African jazz.

[5]**QUESTION 13**

Describe the mbaqanga style found in the music of bands such as Makgonatsohle Band, The Cool Crooners or Soul Brothers.

[5]**QUESTION 14**

Discuss the origin and style characteristics of marabi music. Refer to at least ONE artist or group.

[5]

QUESTION 15

Write an essay on the music of ONE of the following Cape jazz artists:

- Abdullah Ibrahim
- Robbie Jansen
- Winston Mankunku Ngozi

You will be credited for the logical presentation of facts and the structure of your essay.

The essay will be marked according to the following criteria:

CRITERIA	MARK ALLOCATION
Music characteristics	5
Origins and influences	5
Albums/Songs	2
Logical presentation and structure of the essay	3
TOTAL	15

[15]**TOTAL SECTION D: 40****OR**

SECTION E: INDIGENOUS AFRICAN MUSIC (IAM)**QUESTION 16**

16.1 Give a term to describe EACH of the following:

16.1.1 A style of music that includes light dance-like walking on one's toes (1)

16.1.2 The rapid instrumental introduction to a maskandi song (1)

16.2 Choose the item in COLUMN B that matches the artist/group in COLUMN A. Write only the letter (A–E) next to the question number (16.2.1–16.2.5) in the ANSWER BOOK, for example 16.2.6 F.

COLUMN A		COLUMN B	
16.2.1	Abbey Cindi	A	mbaqanga
16.2.2	Phuzekhemisi	B	flute
16.2.3	Soul Brothers	C	SATB/TTBB
16.2.4	Sello Galane	D	maskandi
16.2.5	Isicathamiya	E	moropa wa diatla

(5 x 1) (5)

16.3 Briefly describe the role of music in traditional African religion. (3)
[10]

QUESTION 17

Discuss local and international influences in malombo music. Refer to at least ONE artist or group. [5]

QUESTION 18

Describe the mbaqanga style found in the music of bands such as Makgonatsohle Band, The Cool Crooners or Soul Brothers. [5]

QUESTION 19

Discuss isicathamiya music with regard to its characteristics and how this style gained international status. [5]

QUESTION 20

Maskandi is traditionally a Zulu music style which features prominently in today's popular music.

Write an essay in which you expand on this statement by discussing the origins and characteristics of the style.

You will be credited for the logical presentation of facts and the structure of your essay.

The essay will be marked according to the following criteria:

CRITERIA	MARK ALLOCATION
Origins	4
Style characteristics	6
Artist and song	2
Logical presentation and structure of the essay	3
TOTAL	15

[15]

TOTAL SECTION E: 40
GRAND TOTAL: 120

