

SA's Leading Past Year

Exam Paper Portal

STUDY

You have Downloaded, yet Another Great Resource to assist you with your Studies 😊

Thank You for Supporting SA Exam Papers

Your Leading Past Year Exam Paper Resource Portal

Visit us @ [www.saexampapers.co.za](http://www.saexampapers.co.za)



SA EXAM  
PAPERS

# Via Afrika Siswati Lulwimi Lwasekhaya

## Libanga 12 Study Guide

M.N. Makekana, F.M. Armooh, B.B. Malangwane



Via Afrika

*Our Teachers. Our Future.*



# Study Guide

**Siswati Lulwimi Lwasekhaya**

**Libanga 12**

**Inkhombandlela yemfundzi**



# Lokucuketfwe

Kusebentisa lensitakufundza	ii
<b>Sehluke 1:</b> Timpawu letimcoka temathekshi	1
<b>Sehluke 2:</b> Inchubo nemasu ekubhala	5
<b>Sehluke 3:</b> Emathekshi emibhalombiko	14
<b>Sehluke 4:</b> Liphepha lelisibonelo	34
<b>Sehluke 5:</b> Tinkondlo	37
<b>Sehluke 6:</b> Inoveli	43
<b>Sehluke 7:</b> Temdzabu	47
<b>Sehluke 8:</b> Imidlalo	51



## **Kusebentisa lensitakufundza**

Inhloso yalensitakufundza kwelekelela bafundzi ekubhaleni ematheksthi ekuticambela ngemphumelelo ngekulandzela ticondziso lebanikwe tona, baphindze bakwati kutihlolela imisebenti yabo. Bafundzi batawukwati kubhalela tinhlosongco, timongcondvo, netetsamelilwati letehlukahlukene basebentisa timiso letibekiwe telulwimi lolunotsile lolwemukelekile.

Lensita ihlelwe ilandzela luhlelo lwekufundzisa bafundzi belibanga 10. Ifundzisa lokucuketfwe, indlelanchubo, timiso tekubahala kanye netakhi netimiso telulwimi lokumele ticikelelwe ekubhaeni nekwetfula kanye nekufundza nekwehlwaya njengoba kubekiwe eSitatimendeni Senchubomgomo Yavelonkhe yekharikhulamu nekuhlola.

Kuleso naleso sehluco kucalwa ngekuchaza timiso netidzingo taleyothekesthi yekuticambela, inchubo yekubhala kulandzele sibonelo, umsebenti wekutihlola lohambisana nensita yekuhlola lomsebenti latikhicitele wona umfundzi, kute atewukhona kulungisa emaphutsa ngendlela lefanele.

Lensita yentelwe kutsi umfundzi akhone kutisebentela yedvwa atilungiselela liphepha lesitsatfu nelesibili leluhlolo lweSiswati Lulwimi Lwasekhaya Libanga 10. Ngiyakholwa kutsi lendlela lena yekutsi umfundzi afundze ngesibonelo itawucinisekisa kutsi bafundzi baphumelela ngemalengiso ekufundzeni nekwehlwaya kanye nekubhala nekwetfula ngoba kufundza ngekubona kwenta umuntfu akhone kubona kutsi ngempela lentfo lokutsiwa akayente, iyenteka.



# Sehluko 1 Timphawu letimcoka tematheksthi

Temibhalo ngiwo onkhe ematheksthi labuciko lasuke abhalwe asuselwa enhloko. Wonkhe umbhali utsi nakabhala itheksthi yakhe abe anemlayeto lotsite noma sifundvo lesitsite lafuna kusendlulisela kubafundzi baleyo theksthi. Tiningi tinhlobo tematheksthi letehlukene letifundvwako elulwimini lweSiswati ngetinhloso letehlukene. Nati letinye tato: tindzaba letimfisha, emanoveli, temdzabu, tinkondlo, emaphephandzaba nemaphephabhuku, emafilimu nalokunye.

Tinhlobo temibhalo letifundvwa kulelibanga tintsatfu, ngunati; tinkondlo, umdlalo kanye nenoveli nobe temdzabu. Tonkhe letinhlobo tiyehlukaniseka ngobe tintimphawu letehlukene letibonakala ngato.

## 1. Tinkondlo

Tinkondlo luhlobo lwembhalo lolwehlukane kabili, kukhona tinkondlo temdzabu netinkondlo tesimanje. Tinkondlo temdzamu tatingakabhalwa phasi ngobe betihaywa timbongi ngenhoso yekujabulisa tibukeli, noko nato setibhalwe phasi nyalo. Loluhlobo lwetheksthi lugcame ngesakhiwo salo lesinemigca lemifisha, tindzima, kanye nelulwimi lolunotse ngetinongo tenkhulumo letingutona tiveta imifanekisomconndvo kulosuke afundza. Bunandzi betinkondlo buvakala kahle natifundvwa kuvakale ngenca yesigci lesivakala nakufundvwa.

## 2 Inoveli

Loluhlobo lwetheksthi luba yindzaba yinye lendze, lenetigameko noma tehlakalo letinyenti. Yehlukaniswa ngetehluke. Njengobe kuyindzaba lendzaba lendze nje, iba nebalingisi labanyenti labakhulu nalabancane. Inoveli itsatsa sikhatsi lesidze lesingaba yimphilo yonkhe yemuntfu, kungako nje leyenteka etindzaweni letinyenti. Iba nengcikitsi yinye lenkhulu kanye naletinye leteyeme kulena lenkhulu. Ngenca yebudze bayo ngalesinye sikhatsi kuyashiwo kutsi yindzabandze.

## 3 Umdlalo

Itheksthi lengumdlalo yehlukile kuleminyene imibhalo ngobe yona igcamisa inkhulumomphendvulwano lehambisana nemnyakato. Umdlalo uyindzaba lendze lesamdalo lapho umbhali asebenzisa badlali kwendlulisa umlayeto wakhe. Unetinkhundla netigcawu, badlali labanyenti, yenteka sikhatsi lesidze etindzaweni letinyenti letehlukene njengobe uyindzaba lendze. Uba nengcikitsi yinye lenkhulu nobe naletinye letincane letichakele.

## 4. Temdzabu

Temdzabu luhlobo lwembhalo lolufaka ekhatsi tinganekwane, tiphicaphicwano, tinanatelo, imilolotelo, tilandzelo, taga, tisho, imilolotelo, tibongo temakhosi, tibongelelo, kanye netingoma njll.

## **Tinkondlo**

Senike nafundza ngekwetsi tinkondlo tehlukaniwe kabili, lokutinkodlo takadzeni netinkondlo tesimanje. Tinkondlo takadzeni tifaka ekhatsi tibongo temakhosi, bantfu labadvumile, kubongelelwa kwemfuyo njengetinkunzi, kubongelelwa kwelijaha, emahubo nemilolotelo, tibongo tebantfu nabananelwa, njll.

Nangabe kuhaywa umuntfu lodvumile kusuke kukhulunywa ngebungwazi bakhe, kudvunyiswa ngalokuhle lakwentile. Tinsolo tesive ngalowo muntfu nato tiyafakwa nakabongelelwa. Tinkondlo tesimanje tifaka ekhatsi tenteko noma tehlukalo letinyenti umuntfu latibona tenteka eveni malanga onkhe. Kungaba kufa, injabulo, imfundvo, kungenetiseki ngesento sesitsite, kuhalalisa, kudvumisa, kubalisa, njll. Njengobe ufundzile ngetinhlobo tetinkondlo ebangeni lelendlulile utawuchubela nekubuka kuhlutwa kwato.

## **Kuhluta inkondlo**

Inkondlo ihlutwa ngenhloso yekutfole naku lokulandzelako ngayo.

Lokushiwo yinkondlo/Inshokutsi losobala

Kujula kwenkondlo/Inshokutsi lofihlakele

Umoya wenkondlo

Ingcikitsi nemlayeto

Sakhiwo sangaphandle

Sakhiwo sangekhatsi

Kukhetseka kwemagama

Liphimbo (indlela yekukhuluma)

## **Lokushiwo yinkondlo/Inshokutsi lesobala**

Nakukhulunywa ngalokushiwo yinkondlokusuke kushiwo loku lenkondlo lekhuluma ngako kusukela ekucaleni ite iyofika ekugcineni solo itsintsa lesihloko saleyo nkondlo. Tonkhe tindzima tiyabumbana ngoba letikushoko kusuke kuphatselene nesihloko sinye. Kubalulekile ke kutsi inkondlo ifundvwe yonkhe kuze kutfolakale inshokutsi yenkondlo noma loku lekhuluma ngako ngalokufinyetiwe. Singasho nje kutsi lokushiwo yinkondlo sifinyeto senkondlo.

## **Kujula kwenkondlo/Inshokutsi lofihlakele**

Kujula nkwenkondlo kusho umcondvo lofihlakele lotfolakala enkondlweni. Lomcondvo lofihlakele uvetwa kutsi sonkondlo asebantise lulwimi lolushubile kanye nemagama lakhetsikile lafaka ekhatsi taga, tisho kanye netinongo tenkhulumo etama kwendlulisa loku lasuke akuhlosile. Lulwimi lolunotsile ngilo loluveta umcondvo wesibili enkondlweni. Lomcondvo wesibili nome lofihlakele umfundzi uyatitfolela yena nakafundza inkondlo. Kuyenteka noko labafundzako bavele nemicondvo leyehlukene kuye ngekutsi bayihumusha njani inkondlo nekutsi basekela njani imibono yabo. Ngalesinye sikhatsi kuyenteka noko kutsi inkondlo ingabi nawo umcondvo lojulile kube ngulosobala kuphela.

## **Umoya**

Nangabe kukhulunywa ngemoya losenkondlweni kusuke kushiwo simo sasonkondlo noma imbonji lesuke ikuso ngalesikhatsi ibhala lenkondlo. Umoya wenkondlo uveta kutsintseka kwemiva. Imvamisa bosonkondlo baye babhale ngetehlakalo letitsite etimphilweni tabo letitsintsa imiva ngetindlela letehlukene. Noma angabhala akusiphi



simo sonkondlo, usuke abhala ngenhloso yekwendlulisa umlayeto lotsite ngenkondlo yakhe. Timo letivamile ngunati letilandzelako; kujabula, kusola, kulangatelela, buhlungu, kukhutsata, kujabha, lusizi naletinye. Umoya enkondlweni uvetwa ngemagama asonkondlo nome lulwimi lasuke alusebentisile ekubhaleni inkondlo yakhe.

### **Liphimbo**

Liphimbo lisho indlela sonkondlo latitsatsa ngayo nobe liso labuka ngalo tintfo letitsite emphilweni. Liphimbo lasonkondlo livakala elulwimini lalusebentisako. Sonkondlo angasebentisa lulwimi lolucocekile, lolukhululekile, lwekuncokola, lwekuphukuta, angaba nelitsemba nobe abe ngumuntfu longanalitsemba emphilweni ngetndlela abona tintfo tenteka ngayo.

### **Ingcikitsi nemlayeto**

#### **Ingcikitsi**

Lena yincenye yenkondlo lengiyona iveta umgogodla noma umongo wenkondlo ngaloko sonkondlo lafuna kwatisa bafundzi ngako. Kuyenteka ingcikitsi ibe sebaleni nobe icagelwe emuva kwekufundza yonkhe inkondlo. Ingabhalwa ngeligama linye kuphela kuchaza kutsi inkondlo itsini nobe ikhuluma ngani njengekutsi ikhuluma ngemvelo, inkholo, bugebengu, kufa, lutsandvo, imfundvo njll. Kuyenteka ngalesinye sikhatsi ibekwe ngalokufinyetiwe ibe ngumusho lomfisha nobe sitatimende njengekutsi 'Bubi bekunatsa tjwalakonakala.' Nayo ingcikitsi yenkondlo umfundzi uyatitfolela yena emva kwekucedza kufundza inkondlo.

#### **Umlayeto**

Umlayeto kushiwo loko sonkondlo lasuke ahlose kukwendlulisela kubafundzi ngekubhala inkondlo yakhe. Inhloso yembhali nome sonkondlo kungaba kuyala/kucondzisa kwecwayisa noma kwekhuta simo lesitsite ebantfwini. Konkhe loku sonkondlo ukuveta enkondlweni yakhe ngekusebentisa lulwimi lolushubile lwebumbongi nalolunotsile lolwakha titfombe leticacile engcondvweni yalofundzako. Ase sifundzise lenkondlo:

#### **Sitawubulala umuntfu**

Sitawubulal' umuntfu ngetandla,  
Ngifunga Mbandzeni.  
Sesidziniwe kwekhutwa mhlaba  
Wonkhe kuhle kwabohlongandlebe.  
Tidzakamiva! tidzakamiva!  
Setilucedzile lusha,  
Hhayi bo! Sekuphele tindzaba yini?

Sitawubulal'umuntfu ngetandla.  
Sitawubulal' umuntfu ngetandla.  
Silucedze uma silwentani lusha tsine?  
Asilubeki sibhamu entsanyeni kutsi lusibheme.  
Ngilo nje lolusisukela sitihlalele.  
Sesafa kwetfukwa.  
Senteni kangaka?  
Sitawubulal' umuntfu ngetandla.

Sitawubulal' umuntu ngetandla.  
Lusha lunyatsela emalungelo etfu,  
Lutsi buyani titsandvwa nidzambise  
Tinsizi tetfu sikhohlwe ngato.  
Wonkh' umtali akakhungeinja yakhe,  
Asifuni kubekwa licala lekubulala,  
Ngobe sekusele kancane  
Sibulal' umuntu ngetandla.

### **Umsebenti 2 Sisebenta ngemacembu**

Khetsa yinye inkondlo kuleti letifundvwa lonyaka uyihlute ngekutsi uphawule ngaloku lokulandzelako:

1. Inshokutsi yenkondlo lesobala
2. Inshokutsi lefihlakele
3. Umoya walenkondlo
4. Liphimbo lasonkondlo.
5. Ingcikitsi nemlayeto wenkondlo.

## **Sehluke 2 Inchubo nemasu ekubhala**

### **Inchubo yekubhala**

Kufundza ngekubhala kutawuhlala kufaka ekhatsi inchubo yekubhala. Nakulandzelwa inchubo yekubhala kwentiwa loku lokulandzelako:

#### **1. Kuhlela/ngembikwekubhala**

Ngaphambi kwekubhala incwadzi, hlola ubuye utfole kabanti kutsi kufuneka ubhale ngani. Kumele utfole kutsi incwadzi ibhalelwa bobani (tetsamelilwati) nekutsi yini inhloso yekubhala leyo ncwadzi (inhlosongco). Hlela ngekulandzela sakhiwo sencwadzi kutsi inelikhelo, sibingelelo, umtimba nesiphetho.

Ngembikwekubhala incwadzi kulapho kugcogcwa lwati ngencwadzi lekutawubhalwa ngayo. Lwati lungacocwa ngekusebentisa emaphephandzaba nemaphephabhuku kanye nemmango. Kungayiwa namitatjeni kufundvwe tincwadzi letiphatselene nesihloko. Kungabutwa nebatali nobe lamanye emalungu emndeni, emalungu emmango. Kungasetjentiswa nemisakato namabonakudze. Kungabutwa nathishela imininingwane lephatselene nencwadzi. Lwati lonkhe lolutfolakalako alubhalwe phasi.

#### **2. Kwenta/kubhala luhlaka**

Lwati lolutfolakale lusuke lungakahleleki ngako-ke kumele luhlungwe kahle. Lapha ungacala kubhala luhlaka ngekulandzela luhlelo lotakhele lona nangekulandzela sakhiwo sencwadzi. Loko kuchaza kutsi singakha tinhlaka letinyeti ngekwengeta lokutfolwe ngulabanye sibe silungisana emaphutsa. Loku sikwenta site sibe neluhlaka lolukahle ekugcineni.

#### **3. Kubuyeketa**

Nasewubhalile umsebenti wakho uyawufundzisisa kahle udwebele emaphutsa lafana nesipelingi, lubhalomagama, kukhethwa kwemagama nekutsi lulwimi lusetjentiswe kahle, kunetinongo, timphawu tekubhala tisetjentiswe ngendlela yakhona, njll. Unganika nabontsanga, emalunga emndeni bayifundze indzaba yakho babuye balungise nemaphutsa.

#### **4. Kuhlela kabusha umbhalo**

Emuva kwekufundza kuhlelwa kabusha lapho kunesidzingo njengekuhleleka kwemisho, lulwimi nemagama lasetjentisiwe. Loko kwentiwa kuze kufike lapho sewuneluhlaka lolukahle ekugcineni. Kususwa lokungakalungi kufakwe lokulungile.

#### **5. Kulungisa emaphutsa**

Lapha emaphutsa ayalungiswa netimphawu tekubhala kunakwe kutsi tisetjentiswe kahle kute kugcine kungenamaphutsa.

#### **6. Kwetfula.**

Kulesigaba emaphutsa suke sekalungisiwe, sigaba sekugcina lapho umsebenti lobhalwe ngebunono wetfullelwa tetsamelilwati kanye nathishela kutsi awumakhe.

### **Kubhala tindzaba**

## 1. Indzaba lelandzisako

Lena yindzaba lelandzisa kabanti ngesehlakalo sesihloko lanikwe sona umfundzi.

- Ilandzisa negetigameko letilandzelana ngendlela letenteka ngayo, nobe ucale ngalokwagcina ngako.
- Lena yindzaba lecanjiwe kepha lenekukholweka
- Sikhatsi lesisetjentiswako sikhatsi lesengca, kepha lonelikhono lekusebentisa sikhatsi sanyalo angabhala ngaso.
- Inkhulumongco yenta lendzaba ikholweke, kubika kuphela kwenta ingahehi lendzaba.

Nasibhala silandzela inchubo yekubhala njengoba ichaziwe ekucaleni. Sitawutikhumbuta ngekwetfula tihlokwana tayo lenchubo.

- Kuhlela
- Kwenta luhlaka
- Kubuyeketa nekuhlela kabusha
- Kulungisa emaphutsa
- Kwetfula.

Sakhiwo kumele kube ngulesi lesilandzelako:

Indzaba yakhiwe ngetindzima. Indzima ngendzima yakhiwe ngemisho letsite. Kunaloyihloko naleyo lesekelako nalowo lophetsa indzima. Tindzima kumele titselelane emanti ngekusebentisa tihlanganiso nobe emagama latsite laletsa kuchumana. Tindzima tingaba singeniso, umtimba nesiphetho

### Singeniso

- Siba sifisha
- Siyaheha
- Asiteki indzaba yonkhe, setfula loko lokutawukhulunywa ngako.

### Umtimba

- Tindzima tiba tinyenti emtimbeni
- Indzima ngayinye ngayinye kulomtimba ineliphuzu lelibalulekile neminingwane lesekelako.
- Sichubekela kulenye indzima uma sewubhala ngalelinye liphuzu.
- Asihlanganisi emaphuzu langahambelani.

### Siphetho

- Asicaphele, asiphindzaphindzi loku lokusemtimbeni.
- Sisonga ngekhuluma umcondvo, umbono nobe sifundvo lesitfolakele endzabeni.

Asicaphele naku:

Budze bendzaba kulelibanga ngemagama lali-240-290. Ake sifundze nasi sibonelo sendzaba lelandzisako.

### Latishonela tigebengu kamagolide nesiliva

BekunguMgcibelo, tikolo bekukudzala tavalwa. Bengisedolobheni e-Jabulani Nonkhe, ngiphekelelelwe ngudzadzawetfu lomkhulu Gcebile. Ngangiyewutsengela umngani wami siphophela bekatawugubha lusuku lwakhe lwekutsalwa ngakusasa ngeliviki lelilandzelako.

Edolobheni imbita beyiviwa ngelutsi. Bantfu bebhala benyuka netitaladi telidolobha. Leso naleso sitaladi sasinesicuku saso. Timoto tona tatiphambana, letinye tatiya enhla, letinye tatiya entasi letinye tatijika emakhoneni. Bekungamangalisi ke kuva sekukhala emabheli ngoba phela labanye bantfu abaketayeli kuya edolobheni, bebahle batikhandza babambe ibhonethi yemoto ngesandla. Nami bengikuleso siphitsiphitsi.

Ngawela sitaladi, ngacondzak**kamagolide nesiliva**. Lesitolo sasisandza kuvulwa lapha edolobheni lelikhulu laseJabulani Nonkhe. Lapha ngekhatsi bantfu bebanyatselana. Ngulowo atsenga tidzingo takhe Kwakutsengiswa emacici, emawashi, netindandatho letakhiwe ngegolide, isiliva, nedayimane. Imali yona bengiyonge kusukela ngaBhimbidwane, beseyenela kutsi ngingatsenga siphosibita emarandi lange-500.

Sangena ekhatsi estitolo naGcebile. Sandla sami sasinkonkoshele sikhwama, ngani bayasho kutsi ayikho inkhokhelo yemfwalo lolahleka uhamba nemnikati, kantsi kuyatiwa kutsi tinswelaboya tigcwele nakuphela inyanga. Satsatseka kulelinye liwashi belakhiwe ngekuhlenganisa ligolide nesiliva. Ngalibona ngemehlo engcondvo limengetela esandleni semngani wami. Ngatsi ngisekulowo mcabango ngeva ngishiywa ngumtimba. Ngabona emadvodza lamabili lagcoko tembatfo letimnyama netigcoko letimbonya bonkhe buso kusale emehlo kuphela. Ngema ngatsi khwimilili. Tigebengu! "Lalani phasi nonkhe, ningasibuki!" Kwasho livi lelifusako liphuma kulendvodza lemfishane.

"Hhayi! Abangalali phasi, kepha abeme lapha elubondzeni banamatsele baphakamise tandla, lotawulokotsa nje akhulume namakhalekhikhini, utalibuka aligcine," kwasho lendvodza lendze. Seva lawo mavi, senta lesatjelwa kona. Bachubeka baya kumunye webatsengisi, batsi akaletse yonkhe imali lekhona aphindze atfulule bonkhe bucwebe abufake kuletikhwama tagawini bebatiphetse. Nembala umntfwanebantfu wenta njalo. Ngatsi ngitsi nhla ngabona batsatsekile ngoba imali labayitfolo yayiyinyenti kakhulu. Ngabona lelinye likinobho lolichafatako uma nihlaselwa tigebe ngu. Tinhlitiyo tami taba timbili. Lenye yatsi angichofote lenye yatsi kumbe ngitigubhela lithuna lami. Ngawucitsa lowo mcondvo wesibili. Ngadzela imphilo yami. Ngachofota. Ngesikhashana nje babe sebaifikile baka *Hi-Tech*. Taphaphama batifasa ngabozankosi. Kwabe sekuya kwato esitokisini njalo.

Ngakusasa kwavela ephephandzabeni 'Tindzaba Tetfu' kutsi "umfana waseTakheleni ube lichawe ngesikhatsi elekelela ekubanjweni kwetigebengu letiyingoti". Ligama lami abalikhiphanga ngoba bangafuni kufaka imphilo yami engotini. Ngeva babe sekatsi "Ngumfana wami ke loyo.

### **Umsebenti 1 Ukubhala indzaba lendzisako**

Bhala indzaba lelandzisako ibe ngemagama langabi ngephasi kwe-240 kepha angabi ngetulu kwe-290 ngalesihloko lesilandzelako:

Landzisa ngalokwenteka mhla nihlaselwa tigebe ngu ekhaya kini. Landzela inchubo yekubhala njengoba yetfuliwe ekucaleni kwalesehluko.

## 2.Indzaba lechazako

Indzaba lechazako ingumbhalo losebentisa emagama lakha sitfombe salokuchazwako. Likhetselo lemagama endzaba lechazako alilandzisi kepha likubekela lentfo uyibone ngemehlo engcondvo kutsi inembala lonjani, ivakala njani nawuyitsintsa, ihogeleka njani uma ineliphunga, inambitseka njani, ibukeka njani, ivakala njani njll. Uma umbhali aphumelele kuchaza intfo letsite angakwenta umamatseke, uhleke, ufise kutsintsa, ufise kunambitsa, ugwinye ematse, uhlante, nobe utfufumele, kuye ngekutsi inhloso yakhe bekutsi kutsintseke miphi imi yalofundzako.

Indzaba lechazako ingumbhalo wekucicambela ngentfo loyicabangako nobe loyibonako. Uma ubhala indzaba lechazako, nayo iba nesakhiwo njengayo lenalelandzisako kepha yona ayigcili kakhulu etigamekweni, inamatselakakhulu ekukhombiseni ngalokusobala kutsi intfo ibukeka njani, ivakala jani, inambitseka njani, ihogeleka njani.

Kubalulekile kutsi umbhali asebentise sikhatsi sanyalo uma achaza. Cishe letinyenti timiso netinyatselo tekubhala tiyafana nendzabalelandzisako' kakhulu ekwakheni imisho, silulumagama nekusebentisalulwimi lolunotsile.

### Yini lesingayichaza?

Singachaza tintfo, bantfu, tilwane, takhiwo, tigateko, timo, netindzawo.

Ake sibuke nati tindzinyana letilandzelako kute sibone umehluko emkhatsini wekuchaza nekulandzisa.

1. Kwaba nemoya lomkhulu. Lelitulu vele belilibi kakhulu lesabeka. Bantfu abatange baphatseke kahle ngalesikhatsi babona lelitulu lelalita ngemandla. Tinja takhala tabaleka tayewubhaca.
2. Umoya wawuhlelela ingoma yentfukutselo. Tihlahla tatitila tisima kalukhuni lapho umoya utidlelela ngemandla. Kwakhephutela emafu lamnyama lakwenta uvume tono. Ashulungana, kwagubhutela ematfumbu kubolaluvadlwana. Umbani waklaya kuleso sibhakabhaka lesintima khwishi! Walandzelwa kudvuma lokwaba ngatsi kugicitwa imigcoma letinkhulungwane. Kwabandza ematfunjini etakhamitini takulenzawo letakhe emadlokolwana. Tinja kwaba buklewu klewu, tigoce imisila tifuna tindzawo tekufihla tinhloko, tibona kutsi lamuhla litishonele. Kwachuluka timbokodvo tematje! Uma sibuka letindzima letingenhla letimbili yini umehluko lokhona? Nguyiphi lelandzisako futsi nguyiphi lechazako? Sekela timphendvulo takho ngekucaphuna endzimeni.

Uma ngabe utse leyekucala iyalandzisa, uphendvule kahle, leyesibili iyachaza. Ikwenta ubone ngemehlo engcondvo kutsi kwakwentekani, uyawuva lomoya ngetindlebe uhhusha, uyatibona naletihlahla tisiphalata, uyatibona nobe setidlelelwa ngulomoyangemandla setigcina tisiphuka timphandze, uyeva, wetfuke, wesabe ngalendlela lesimo selitulu lesichazwe ngayo.

Ake sibuke nasi sibonelo sendzaba lechazako:

Bhala indzaba uchaze umngani wakho lomtsandzako ucacise kutsi yini leyenta umtsandze. Emphilweni akukafanele umuntfu abe yinkhomo ledla yodvwa. Nami nginemngani lomuhle lengimtsandzako losifuba sami futsi longikhutsatako uma nginetinkinga. Unebuso lobuyingilizi. Unelibala leliluhlata lelitsandzekako. Sikhumba sakhe sibusheleleti ngatsi seluswane. Unemehlo lamhlophe futsi lamakhudlwana kunalawa ami. Uneminyaka lelishumi nakune kepha uma umbuka ucabanga kutsi ingetulu kwaleyo. Unelitsambo ngoba ubalelwa kulabo labadze eklasini futsi usibukubukwana lesihle lesililambalidile. Unemilente lemidze lengatsi yebakhangisi betimphahla.

Uyayidla indvwangu umngani wami. Angeke nje umkhandze agcoke imphahla lemnyama lensundvu. Utsandza imibala legcamilefutsi uyakwati kuyihlobanisa. Utsandza timphahla letibovu, letiluhlata, letimhlophe, letiliphuti nobe letibukhwebeletane. Pho uyafanelwa yini bo! Angikamkhetsi ngoba amuhle ngesakhiwo, kepha lokwangidvonsa kuye kutsi ungumuntfu webantfu. Ngaso sonkhe sikhatsi uhlala ajabulile. Ngeke ukhandze acudvule umlomo. Akatsatsi tinkinga takhe atetfweise lomuye umuntfu. Ungumngani lonenhhlitiyo lenhle, lohlakanihpile, locotfo, lonelutsandvo neluvelo. Uyatsandza kutsi lanako akusebentise nalabanye bantfu. Akasiye umngani lohlebanako nalonemona. Uma uke wahleba umuntfu kuye uyatisola ngoba utakubuta kutsi amtjele yini lona lokhuluma ngaye kutsi wena utseni ngaye.

Sibusisile ngumuntfu lotimiselako kuyo yonkhe intfo layentako. Akasiyo intfombatana levilaphako. Ukhutsele uhlala njalo enta umsebenti wesikolo. Kute lokumangalisako uma sekatfola imphumelelo ngemalengiso kuto tonkhe tifundvo takhe. Etifundvweni tetibalo sonkhe sisitwa nguye. Ungafunga utsi unguthishela ngendlela lanesineke ngayo uma asichazela. Cishe sonkhe eklasini sesiyativisisa tibalo ngoba uvele asitjele kutsi konkhe kusengcondvweni yakho, ungatsi tibalo tiyakwehlula vele titakwehlula, kepha ungatsi uyatikhona vele utawutikhona. Lamavi akhe asikhutsata kakhulu.

Phela lomuntfu unetiphiwo letinyenti, ekwayeni lesikolo uhamba embili, kantsi nakutemidlalo ukhona. Uye eGreece edolobheni le-Athens, waya nase Germany nase Australlia. Ulichawekati letemidlalo. Akabuyi nendondo yinye Ubuya netindondo tegolide, nakehlulekile utfola yesiliva.

Nabatisho labatatiko batsi wafuta batali bakhe. Nabo bebanemakhono lamangalisako basafundza sikolo. Abagcinangangekutsi bamuphelolo futo lwekuhlakanipha nekuwati kudlala imidlalo, baphindze bamkhulisa ngendlela lefanele. Nobe Siswati sitsi akukho geza linganasiyela, kuSibusisile ungasiphikisa lesaga, ngoba phela uphila kungatsi akusiye umuntfu walapha emhlabeni. Sonkhe siyafisa kufana naye, usibonelo lesihle.

### **Umsebenti 2 Ukubhala indzaba lechazako**

Bhala indzaba lechazako ngathishela lomtsandzako. Indzaba yakho ayibe ngemagama langabi ngaphasi kwe-240 kepha angabi ngetulu kweli-290.

N.B Njengoba ubonile lapha ngenhla nawe sebentisa emagama lachazako.

## **3. Indzaba lehlangotsilunye**

Kumele kutsi utsatse luhlangotsi, bese wesekelalowo mbono wakho ngendlela letawuba neligalelo lelikhulu ekutseni bantfu bavumelane nawe esihlokweni lonikwe sona.

Sihloko sendzaba letsatsa lehlangotsilunye sivame kutsi sibe nemibono leyehluhlukeni. Wena lobhalako ukhetsa lunye luhlangotsi, bese wesekele lowombono ngemaphuzu langemaciniso levakalako futsi lacacile.

Ungakhetsa sihloko sendzaba lehlangotsilunye, kubalulekile kutsi wente libalavengcoondvo neluhlaka kute utewubona kutsi unelwati lolungakanani ngalesihloko nobe loluhlangotsi lolukhetsile lwesihloko.

Singeniso sakho kufanele sichaze kafishane ngesihloko siphindzesikhombise kutsi wena utawutsatsa luphi luhlangotsi futsi utayidzingidza ilandzelane njani imibono yakho.

Ungayicala indzaba yakho ngembuto nobe ngetibalo telucwaningo letishacisako letitawukwenta bantfu basekele lowakho umbono.

Umtimba wenzaba yakho wakhiwe ngetindzima letesekela loluhlangotsi lolutsetse nato tinemisho lesekele leyo mibono lemcoke ngetibonelo, tibalo telucwaningo, nemaciniso latsatselwe elucwaningweni lwesihlokolosikhetsile.



Tindzima takho kufanele titselelane emanti ngekusebentisaemagama ekuchumanisa tindzima lakhomba kwengeta, kufaka umbonolowehlukile nobe kukhomba kuphetsa umbono wakho kuleyondzima.

Imibuto lengadzingi timphendvulo nobe imphindvwa ungayisebentisa ekutseni uphokelele tetsamelilwati kutsi ticabange njengawe.

Siphetfo asibe sifisha, sigcizeleleluhlangotsi lwakho kute kuhlalenjalo kukhumbuleka kutsi lendlela lobona ngayo tintfo ingiyo sibili.

Ake sibuke nasi sibonelo sendzaba letsatsa luhlangotsi:

Bafundzi abatsandzi kutsi babanikwe umsebenti labatawenta ekhaya. Labanyenti batsi akuyekelwe kunika bafundzi umsebenti wasekhaya. Utsini umbono wakho ngalesihloko?

Umsebenti wesikolo lowentiwa ekhaya uyincenye lebalulekile yekufundza kwetfu tsine bafundzi. Ngaleso sizatfu sifanele kutsi siwente ube sezingeni lelisetulu. Angivumelani nembono lotsi akuyekelwe kunika bafundzi umsebenti wasekhaya. Ngitsi abachubeke basinike kepha kunetintfolekumele tilungiswe bothishela, batali nebafundzi kute kubete tihibe ekwenteni umsebenti wasekhaya.

Kwekucala nje umsebenti wasekhaya siwunikwa kute sitfole ematfuba langetiwe ekwenta umsebenti wetfu. Lawo matfuba asisita kutsi sikhone kuvisisa loku besikwenta eklasini, kulesinye sikhatsi sisuke sicedzisa umsebenti lebesiwenta eklasini.

Kwesibili, umsebenti wasekhaya wenta kutsi tingcondvo tetfu tikhone kubamba emakhono nelwati lolufundvwako ngekutsi sitentele sisodvwa nobe sisitwa batali betfu. Ngibekisenje, sifundvo setibalo sidzinga umfundzi kutsi ahlale njalo atilolongangekwenta tibalo letibalwa ngendlela lefanako naletilatifundze esikolweni sekusetjentiswa tinombolo letehlukile. Loku kwentelwa kutsi indlela yekubala umfundzi angayicageli kepha ayati. Umphumela wekungatilongi kukhohlwa. Bancane kabi bantfu labeva intfo kanye, bayente kanye bese bayayibamba sikhatsi lesidze engcondvweni.

Kwengetaesifundvweni setibalo, kunesifundvo setilimi. Lesifundvo sentiwa ngelizinga Lwelulwimi Lwasekhaya, Lulwimi Lwekucala Lwekwengeta neLulwimi Lwesibili Lwekwengeta. Nobe ngabe umfundzi ufundza ngaliphi lizinga, lokubalulekile kutsi akwati kulukhuluma, kulufundza, kulalela nekubhala nekwetfula. Phela bafundzisi angeke bakhone kusifundzisa onkhe emagama, tisho netaga letikulelo lulwimi, kudzinga tsine sibafundzi sitifundzele, sitilalelele sitibhalele, siphindze silukhulume. Umsebenti wasekhaya uyasita ke ekutfufukiseni lawo makhono elulwimi. Uphindze usite nebatilikutsi batibandzakanye ekufundzeni kwetfu. Akukhatsalekile kutsi umtali ufundzile nobe cha, angaba neligalelo afundzile nobe angakafundzi.

Kuliciniso kutsi timo tasemakhaya atifani, labanyebantfwana abanganayo kahle indzawo yekufundzela ngoba balala babe banyenti ekameleni lekulala, labanye njalo betelona likamelo lekulala, balala ekameleni lekuhlala. Kulesinye sikhatsi utfole kutsi kute litafula lekubhalela futsi kute nekwekukhanyisa. Leti timo atingabi tihibe. Bafundzi kumele batise bafundzisi kute kwentiwe sikhatsi sekwenta umsebenti wasekhaya uma sesiphumile sikolo. Loko kungagcugcutela bafundzi kutsi bakhone kusitana.

Ngakulolunye luhlangotsi, sikolo naso kumele sidlale indzima yaso. Bafundzisikumele bahlangane bahlele kutsi bafundzi batabanika imisebenti langanani ngeliviki. Esikhatsini lesinyenti utfole ngulowo nalowo mfundzisi anika bafundzi umsebenti lomnyenti ngelilanga linye. Sigcine tsine bafundzi singakhoni kulala kantsi ekuseni kumele siphindze sibuyele kuyewufundza cishe lilanga lonkhe. Bese asiseva lutfo ngoba sisuke singakalali.

Sengiphetsa, sibafundzi asiyekeleni kuvilapha. Wetfu lomsebenti. Asiyekele nalokukopisana, akusisiti. Phela umhlaba ukhungetfwe tinkinga letinyenti. Angeke sibe yincenye yaletisombululo uma ngabe singatichamukeli nemibono lemisha ekufundzeni kwetfu siphike kutsatsa kwalabanye. Umsebenti wasekhaya awungayekelwa. Ubalulekile ekufundzeni kwetfu.

### **Umsebenti 3 Ukubhala indzaba**

Bhala indzaba nganasi sihloko lesilandzelako.  
Kufanele yini kutsi bantfwana labasafundza sikolo batsengelwe bomakhalekhini? Utsini umbono wakho?

### **Indzaba lesuselwa kusibonwa**

Lenzaba lena isuselwa esifombeni losibukisisako, nobe igrafu, nobelithebula, utfole iminingwane letsite bese uyinika sihloko lesitawuhambisana naloku lokubonako. Sibonwa kungaba sifombe, sikhangisi, emavi lacashuniwe, sikhangisi, igrafu, lithebula. Wena ungumfundzi kufanele ube nelikhona lekususa lwati egrafini nona esifombeni luye emagameni. Lokubhalako kufanele kuhambisane nalesibonwa. Ungachaza, ungalandzisa, ungatsatsa luhlangotsi.

Sibonelo: Bhala indzaba ubhekise kulesibonwa lesilandzelako:



Ngifundza inoveli yami. Ngihleli kuveranda wendlu yakitsi lesitezi. Ngiva umoya loshaya kamnandzi. Ngiyibeka phasi ngoba ngifuna kubuka timvivaneletimibalabala. Tinyoni tintjilota kamnandzi ngemaphimbo ato. Nangibuka lapha ekudzeni etintsabeni, ngikhangwa buhle betintsaba taseGraskop letimagelemba lamahle. Sibhakabha sihle siluhlata futsi site ngisho linye lifu.

Ngitusabuhle bemvelo kantsi lapha ngemva kwendlukucubuka emafu lamnyama khwishi. Akhephutela ahamba ahlanganisa sibhakabhaka. Ngesikhashana lilanga lafiphala

netintsaba tangabe tisabonakala. Liyadvuma ngiyagcuma ngiya etulu. Ngivala emafasitelo kute umoya ungangeni endlini. Nangiphuma ngaphandle simo sesishubile sibili. Tihlahla tidansa tibuye tishaye inkhwela. Tintsambo tagezi nato tiyagcumagcuma ngoba umoya sewuhlabelela ngemandla. Sibhakabhaka phela sesimnyama khwishi, sisindvwa ngemafu emvula. Ematfonsi labuhlungu ehla kabili katsatfu kwasekulandzela timbokodvo tesitfwatfwa. Umoya utfukutsela kakhulu, uhamba udzimula tihlahla letinkhulu, tisiphuka netimphandze tato. Lapho ngihlahla emehlo abangangewesicoco ngoba labadzala abakabuyi emsebentini. Lidvuma liphosa nembani lophandla emehlo nje ngingedvwa.

Nasi sigcobo sagezi siwa. Ngiyavelelwa, utawuhamba gezi ngitawubayini na? Angikalimiti, nango gezi ahamba. Ngiphumphutsa likhandlela, ngiyakhanyisa. Nangitsi ngiklwebha umetjiso liyadvuma ngizuba ngiya etulu kuwa umetjiso lowo. Angikabuti elangeni, ngiva kugwabuka emathayela akamakhelwane. Ngisahlola ngibona nalawa akitsi aphapha emoyeni kuhle kwendizamishini. Ngitfwala tandla enhloko angidzinda ematje.

Wo yenteka indzaba lenkhulu. Timphahla tasendlini tiyanetfwa. Ngitawubalekela kuphi ngoba namakhelwane ukhala bumayemaye. Ngingena ekhatsi lakuhlala timphahla khona ngiyabhaca. Ayangena emanti ngebuningi. Kuyatsamba konkhe lokulapha endlini. Imibhedze, tingubo, emakhabete, emabhuku ami, nemabhuku emndeni wonkhe. Ngitsi ngilalele ngiva make uyamemeta. Hhawu mine ngemntfwanami, hhawu minengendlu yami ngitawushonaphi, name ngacala ngakhala kantsi bengisolo ngetfukile kungaphumi nenyembeti ngoba konkhe kwaba ngatsi ngiyaphupha. Nakangiva ngikhala wathandaza abonga kutsi ngiyaphila.

Ukhipha makhalekhikhini ushayela malume kutsi asilandze. Uyasilandza, siyahamba siya ekhaya lakhe, kute lesingakhona kukusindzisa ngoba konkhe kutsambile. Sengimajokololo ngoba nayo imvula solo ayikatibeki phasi. Landleleni akuhambeki ngenca kunemadamu emanti, tihlahla tiwele ekhatsi emgwacweni akubukeki. Siyafika kaMalume, cha khona kungotimakhata. Ligcobile kepha abakapheshukelwa tindlu. Ngeke ngilikhohlwe lelilanga letimanga.

#### **Umsebenti 4 Kubhala indzaba lesuselwa kusibonwa**

Fundzisia lesibonwa lesilandzelako bese ubhala indzaba yakho. Emagama angabi ngaphasi kwe-240 kepha angabi ngetulu kwe- 290.





**Nobe**



Fundzisia lesibonwa bese ubhala indzaba yakho.Emagama angabi ngaphasi kwe-240 kepha angabi ngetulu kwe- 290.

**Nobe**



Fundzisia lesibonwa bese ubhala indzaba yakho.Emagama angabi ngaphasi kwe-240 kepha angabi ngetulu kwe- 290.

## Sehluke 3 Ematheksthi emibhalombiko

### Tinhlobo tetincwadzi

#### Incwadzi yebungani

Incwadzi yebungani yincwadzi lebhalelwa bangani, tihlobo letifana nabobabe, bomake, bodzadzewetfu, bomzala, bomkhulu, bogogo, njll. Kunetinhlobo letehlukene tetincwadzi tebungani letifana nencwadzisimemo nencwadzi yekuhalalisela. Lencwadzi isebentisa lulwimi lolukhululekile naloluvumelekile.

Kulesikhatsi lesiphila kuso sekuyimvelakancane kubhalwa kwencwadzi yebungani ngobe sekukhona emameyili, emafeksi, ema-sms, face book, whatsapp, njll. Nobe kunjalo kubalulekile sati kutsi ibhalwa njani incwadzi.

Kubhala nekweftula kuhlanguanisa ndzawonye tincenye letintsatfu:

- Timphawu tematheksthi lehlukahlelene
- Kusebentisa tindzima nesakhiwo semusho netimphawu tekubhala
- Kusebentisa indlelanchoo yekubhala

#### Lokubalulekile nakubhalwa incwadzi

- Kusebentisa lulwimi, irejista nesitayela ngalokungakahleleki kuya kulokusakuhleleka.
- Kubhala ngelulwimi lowetayelekile.
- Kukhombisa kuhleleka lokungahlanhlatsi kwalokucuketfwe.
- Kulandzela sakhiwo sencwadzi.
- Kubhala likheli linye lalobhalako lelinelusuku lekubhalwe ngalo incwadzi.
- Kusebentisa sibengelelo lesingakahleleki kuya kulesisakuhleleka silandzele likheli lalobhalako
- Kubhala sivaleliso ngelulwimi lolungakahleleki kuya kulolusakuhleleka.

Kunetinhloso letehlukene letisenta sibhaletincwadzi tebungani njenganati letilandzelako:

- isimemo
- kubonga
- kuhalalisa

Lokucuketfwe yincwadzi/sitayela

- Iyevakala futsi icondze ngco
- Ayisiyindze futsi igcila esihlokweni
- Iyahlonipha futsi icuketse lwati lolufanele
- Ayisebentisi sidolobha nelulwimi nje
- Ayisebentisi emagama lafinyetiwe
- Tindlela tekufundzisa incwadzi
- Ayibe nesingeniso, umtimba nesiphetho
- Ayibe nelikheli
- Ayibe nelusuku
- Indzima ngayinye ayimumatse umcondvo munye

Tindlela tekubengelela

- Kugagula ngeligama
- Kusebentisa tihloko
- Kusebentisa sinanatelo

Tindlela tekuvalelisa:

- Ngimi Indvodzakati yakho njll
- Ngimi umngani wakho

## 1 Incwadzi yebungani

P.O.Box 50  
Nelspruit 1200  
4 Mabasa 2013

Nokwanda

Batsi kwandza kwaliwa batsakatsi. Mine ngiswela nemagama lakahle lengingabonga ngawo longentele kona ngalesikhatsi ngitse shice etinkingeni emva kwekushona kwebatali bami.

Nabashona batali bami engotini ngabona ngatsi umhlaba sewufike ekugcineni kimi. Ngabatse ngenta loku ngatitfoli ngingenako kujabula. Kwaba kulapho sengingena ecejini lebangani labasebentisa tidzakamiva. Cha tona betingiyenga, ngive kungatsi tinkinga tami setiphelile, kantsi tingaphela engatini bekubuya konkhe kuhlupheka kwami. Kungako ngagcina ngifuna kutisebentisa siphelane. Ekucaleni bengite inkinga ngoba imali lengiyishiyelwe batali bami beyitindvodla. Yabese iyaphela ngoba sengiphilela tona letidzakamiva. Besengiyekele nesikolo. Bengibona kungatsi utsandza kugcumekela etindzabeni tami ngalesikhatsi ungibonisa.

Bengikubalekela, ngingafuni nekukubona. Kepha awutange uphele emandla. Wema njalo ungiyala ungibonisa indlela. Ungitjela kutsi imfundvo isikhiya semphilo angibuyele esikolweni nekutsi kutinikela ekukholweni kungayisindzisa imphilo yami.

Lengikubonga kakhulu kutsi ungilandzele beTenhlahalakahle batewungeluleka ngebubi bekutsatsa tidzakamiva. Teluleko tabo tingisitile. Naku sengibuyele esikolweni, futsi ngiphumelela ngemazinga lasetulu kuto tonkhe tifundvo tami. Nemcondvo wami sewusangulukile. Sengiyageza ngibe muhle ngiyekele kuba tinsila. Impela ngiyawukukhohlwa ngifile. Nami sengiyawusita labanye!

Lunwele loludze Khumalo, Mntungwa lomuhle kutinika sikhatsi ngami. Ngitawenta imitamano sibonane kute ubone kutsi vele teluleko takho tisebentile emphilweni yami.

Bakhonte bonkhe ekhaya  
Umngani wakho  
Sibonangaye

## 2 Sibonelo sencwadzisimemo

P.O.BOX 30  
Nelspruit  
1200  
10 Lweti 2013

Ncedzile

Ngibhala lencwadzi ngoba ngifuna kukumema kutsi utewuhlanganyela nemndeneni wakitsi I kulomcimbi lotawube ukhona lapha ekhaya.

Umnaketfu Sati usandza kuphotfula etifundvweni tebudokotela eveni laseCuba.Imiphumela yakhe ibe mihle kakhulu kwendlula bonkhe bafundzi.Ute watfola umklomelo lobitwa ngekutsi ngumklomelo wemphatsi wenyuvesi lonikwa umfundzi lobashaye bonkhe.

Lomcimbi utawubanjelwa lapha ekhaya kitsi emakoko Ngalesihlanu ngensimbi yelishumi nakubili emini.Kutawube kunelithende lelikhulu leligcwala tinkhulungwane tebantfu. Kugcokwa timphahla letimhlophe.Phatsa lokunye lotakugcoka uma sesitijayivela.

Kutawucala kube nenkonzo yekubonga lapho kutawuba netinkhulumo, imilayeto yekuhalalisa.Emva kwaloko kutawudliwa, kutawube kusindvwe ngebelitfole. Ingani kuhlatjwe inkhomo kwaphindze kwacashwa nenkampani letawupheka.

Nasicedza kudla tsine labasha sitawubese siyakhululeka siyatijayivela.Phela kucashwe DJ Ziyaduma, uyamati ken awe kutsi usematseni kulamalanga.

Fika mngani wami, ungalenti liphutsa.Buya ujabule natsi.Sesitawubonana ngalesihlanu khona emcimbini.Ngitakuhlangabeta esiteshini.

Ngimi umngani wakho  
Salebona.

## 2 Incwadzi yemtsetfo

Incwadzi yemtsetfo siyibhalela bantfu labakhulu, nobe lababalulekilengalendlela tsite.Lulwimi lwayo lucocekile.Lukhomba kutsi anisibobangani, nihlanganiswa simo lesitsite kute nibhalelane.Incwadzi yemtsetfo singayibhalela kubonga, kucela lokutsite, kukhonona, kwatisa,kutsenga, nekubika.

Lencwadzi yehlukile kunalena yebungani ngoba.Inemakheli lamabili.Lulwimi lwayo lucocekile.

- Sibingelelo sibhalwa ngekuhlonopha: SitsiMnumzane/Nkhosikati/Nkhosatana. Ngemuva kwesibingelelo sibhala sihloko salokubhalwangakokulencwadzi.
- Indzima yekucala isho inhloso yalencwadzi.
- Tindzima letilandzelako tichaza kabanti ngenhloso yencwadzi, tinike imininingwane leminyenti.
- Kushiywa umugca emkhatsini wetimphendvulo
- Kuvalelisa nako kutfobekile
- Siyaye sibhale sitsi: Ngimi lotitfobako.
- Kuyasayinwa ngaphambi kwekubhala ligama lakho.

Tibonelo nemininingwane yetincwadzi temtsetfo.

Incwadzisikhalo



- Emakheli mabili
- Nika sihloko salokhala ngako
- Beka sikhalo sivakale
- Nika imininingwane lebalulekile
- Yetfula ngemoya lopholile, ungatsetsi
- Ungabeki muntfu licala
- Condza ngco esikhalweni sakho
- Nika nelikhambi
- Sivaleliso sihlelekile(ngimi lotitfobako)
- Sayina
- Bhala ligama nesibongo sakho

### **Incwadzi lecela umsebenti**

- inemakheli lamabili
- Bhala sibingelelo
- Bala sihloko
- Shano kutsi ubone bakhangise kuphi
- Nika lizinga lemfundvo nemnyaka lowaphotfula ngawo
- Nika lwatinchanti lwemsebenti
- Sebentisa lulwimi lolucocekile

Incwadzi leya kumhleli weliphephandzaba

- Inemakheli lamabili
- Sibingelelo
- singeniso umtimba nesiphetho
- Ayikhombise kucabanga lokutfufukile ngesihloko
- ayicace kutsi iyagceka nobe iyancoma
- Ayingatsatsi luhlangotsi
- Ayibeke emaciniso njengoba anjalo.

### 3 Incwadzisikhalo

Ngomane Senior Secondary  
P.O. Box 23  
WhiteRiver  
1240  
14 Mabasa 2011

Mphatsisikolo  
Luvivane Senior Secondary  
Private Bag 4  
Nelspruit 1200

Mnumzane / Nkhosikati / Nkhosatane

#### **Sikhalo ngebafundzi labeba tikhwama tebantfwabetfu**

Ngicela nekhute labafana lasebacedze tikhwama tebantfwana betfu lapho esikolweni eLuvivane.

Lesikolo sineludvumolapha emmangweni. Sitfumela bantfwana betfu khona ngoba siyati kutsi likusasa labo liyakhanya. Lokutsandza kusetfusa kutsi kulamalanga bantfwana betfu kuwo onkhe emabanga bakhala ngekwebelwa tikhwama nemabhuku. Batsi kwebiwa kakhulu ngaLesitsatfu ngoba bacale babutsane ndzawonye endzaweni yekuhlangana kute batfole timemetelo teliviki kubothishela. Kulapho ke lemigulukudvu itfolo litfuba lekungena emaklasini abo yebe letikhwama. Lokubhulungu kutsi abatsatsi letikhwama kuphela baphindze batsatse nalamabhuku.

Loko akusakhinyabeti umfundzi kuphela natsi kuyasitsintsa sibatali ngoba ekupheleni kwemnyaka kumele siwabhadale lamabhuku. Sitawubhadala kube bantfwana betfu bangahle bangaphumelelingoba abanamabhuku ebiwe?

Ngiyawati emagama alabafana. Ngeke ngiwadzalule lapha kulencwadzi. Ngike ngababona betama kutsengisela bantfwana besikolo lesingumakhelwane letikhwama. Bebagcoke inyufomu yalapho eLuvivane. Ngalesikhatsi ngibabona bengitsi benta ibhizinisi, bengingati kutsi babhizinisa ngemandla etfu tsine batali bebantfwana baseLuvivane. Siyacela Mphatsisikolo nabothishela niselekelele kulenkinga lesibukene nayo.

Ngiyabonga.

R.T.Z Mshika.  
Ligama lemphatsi

#### **4Incwadzi leya kumhleli weliphephandzaba**

Incwadzi leya kumhleli weliphephandzaba isibonelo sencwadzi yemtsetfo. Lencwadzi isebentisa lulwimi lolucocekile. Lencwadzi ibhalwa lilunga lemmango libeke umbono walo ngendzaba letsite letsintsa ummango. Umbhali uyaye afune kuvakalisa luvo lwakhe afuna netetsamelilwati, tivumelane naye kulombono wakhe.

- Lencwadzi inemakheli lamabili. Sibingelelo sitsi Mnumzane/Nkhosikati.
- Awunhlanhlatsi, ucondza endzabeni.
- Singeniso sakho sibeka umbono wakho ngaloludzaba lobhala ngalo.
- Umtimba wakhiwe ngetindzima letimfishane letinemibono lesekelwe.
- Sebentisa emaciniso kusekela imibono yakho.
- Imibuto lengadzingi mphendvulo, nekuphindzaphindza kuyasita.

P.O. BOX 119  
Kanyamazane  
1214  
25 Inkhwenkhweti 2013

Mhleli weliphephandzaba  
Liphephandzaba Tindzaba Temaswati:  
P.O Box 213  
Kanyamazane  
1214

Mnumzane/Nkhosikati/Nkhosatane  
Kunatsa kwebantfwana besikolo  
Ngililunga lemmango walapha kaGweje, ngitsandza kuvakalisa kukhatsateka kwami ngelusha lwakitsi kuleliphephandzaba lelifundvwa sive sonkhana Tindzaba Tetfu. Angivukeli kaMlumbi, ngiyatisebenta. Ngako sikhatsi lesinyenti ngisicitsa lapha esipaza sami. Lengikubona kwentiwa bantfwana betfu labafundza sikolo kungenta ngitibute kutsi kantsi sikolo sekwaba yindzawo lenjani. Sekungemahlandla lamanyenti ngibona bafundzi banatsa tjwala bagcoke iyunifomu yesikolo ngesikhatsi sesikolo. Loku akuveti sitfombe lesihle ngatsi batali baseGweje nabothishela baseSicakile.

Ngitsi nangitsi ngiyabakhulumisa bangiphendvule kungatsi ngiyintsanga yabo, bangitjela kutsi bengingekho ebusheni babo. Lokubuhlungu kutsi linyenti libukeka lisemabangeni laphasi, kepha sekuyimihuca nje, kuwisa linye libhodlela kuvuke lelinye. Uma sekangene kahle lamponjwane emtsanjani bese bayahlabela babangele bantfu umsindvo. Bantfwana ngumliba loya embili, kepha uma kubuna wona ubuniswa tjwala, sive asinawuba nayo inchubekela phambili. Asibambaneni siphume nelikhambi.

Ngimi Lotitfobako

S.S. Mzileni.

## **Umsebenti 1 Kubhala**

Bhala ngalesihloko lesilandzelako ngemagama langema-80-120.

Umngumsebenti wasepulazini. Bhala incwadzi leya ephephandzabenilangakini ukhonone ngesimo lesingesihle lenisebenta ngahasi kwaso.

Incwadzimbiko - imemorandamu

- Imemorandamu isetjentiswa ngemalunga etikhungweni temsebenti
- Iyindlela labachumana ngayo uma kunembiko lophutfumako
- Kuvame kuba nelifomu lebalisayinako kutsi sebawubonile lomlayeto nobe kwentiwe emakhophi kute lowo nalowo abe nayo.

Sibonelo:

Asakhane Sugar Mill

**Iya:** Kuwo onkhe emalunga

**Ibuya ku:** Mcondzisi weNkampani

**Lusuku:** 11 Inyoni 2011

**Inombolo yememorandamu:** 23/2012

**Sihloko:** Ingoti levelele basebenti

## **Umlayeto**

Sisandza kutfolo umlayeto lotse kwenteke inhlekelele yengoti ngalesikhatsi lbhasi lelayishe basebenti bakulenkampani ilahlekelwa ngemabhiliki nemshayeli ehluleka kuyilawula. Ibese Ingena eweni. Kutsiwa banyenti labalimele. I- ambulensi seyibitiwe seyivele iphutfumise labanye esibhedlela.

Naku lesitakwenta kusukela nyalo:

- Sitawuvala umshini wekugaya shukela ungasebenti lamuhla ngoba kulimele labanyenti labakulelitiko lekusetjentiswa kwemshini.
- Sitawuya lapho kwenteke khona ingoti.
- Labanye batawatisa laba labasemasimini ngalengoti.
- Sitawubese setama kutsintsa imindeni yalabo labalimele kulengoti

Z.B Ncele Umphatsi

## **5 Umlandvomphilo**

Umlandvomphilo ngumbhalo wekwatisa bantfungebunguwe. Udzingeka etindzaweni lapho ucele umsebenti khona nobe lawucelakhona imali yekufundza. Uba neminingwane yonkhe ngemphilo yakho: lecondzene nawe, imfundvo yakho, Tifundvo lophumelele kuto nekutsi uphumelele njani, , lwati lwemsebenti, Emakhono, nalotsandza kucitsa ngako situnge, bofakazi labakwatiko.

Akesibuke nasisibonelo lesilandzelako:

## **Umlandvomphilo waThandi Maseko**

### **1 Imininingwanemnikati**

Sibongo : Myeni  
Libito : Gugulethu  
Bulili : Lomsikati  
Kushada : Angikashadi  
Tekushayela : Khodi 10  
Inkholo : NgingumKhrestu  
Inombolo yamatisi : 1107084161175  
Likheli lasekhaya : 17 Tingwenya Road Sonheuwel 1201  
Likheli lasekhaya : Box 1Nelspruit 1200  
Lucingo lwasekhaya: 013-7941122  
Makhalekhikhini : 0762394511  
Simo Semphilo : Ngiphilile

### **2 Temfundvo**

Imfundvo Lephasi : Khulakahle Primary  
Imfundvo Lephakeme : Tikhetsese Senior Secondary  
Tifundvo Letiphasiwe : Siswati lulwimi Lwasekhaya, Singisi lulwimi lwekucala  
lwekwengeta, Isayensi, Tibalo, Temphilo nekuhleleka kwayo  
Inyuvesi : UDW  
Tifundvo : BA kuumusha kusuka eSiswatini uye eSingisini.

### **3 Lwatinchanti lwemsebenti**

Litiko LeTemasiko, Temidlalo Nekukhibika:1984 -1990

### **4 Tekucitsa situnge**

Kufundza emanoveli eSiswati neSingisi  
Kubhala tindzatjana

### **5 Bofakazi**

Mnz. DZ Malaza Umcondzisi weLitiko (Meninjeli Weliposi LaseNasipoti)  
Lucingo: 0724233331  
Nkhskt. TS Bhembe (Umfundisi)  
Lucingo:0832222200

## **Umlandvomufi**

Tidzingo temlandvomufi nguleti letilandzelako:

- kuvetwa ligama laloshonile
- lusuku lwekutsalwa nelekushona kwakhe
- indzawo latalalelwe kuyo
- imbangela yekushona kwakhe
- budze besikhatsi lasigulile
- Imphumelelo nobe tintfo letinhle lahlabene ngato
- lizinga lemfundvo
- bekasebenta kuphi
- kutibandzakanya kwakhe emmangweni
- ushiya bobani emhlabeni
- umlayeto wekudvudvuta umndeni

Ake sibuke nasi sibonelo semlandvomufi:

## **Umlandvomufi waPhineas Nhlangatemukanemoya Mhlanga**

Umufi Phineas Nhlangatemukanemoya Mhlanga, loyindvodzana yekucala yaLoliwe naLomasela Mhlanga watalwa mhla tingemashumi lamabili nakunye enyangeni yeNgongoni ngemnyaka wanga-1961, eMahushu esifundzeni saseMpumalanga. Wacala kufundza esikolweni semabanga laphasi eMahushu.

Imfundvo yemabanga laPhakeme wayitfolala emaJombe lapho atfolala sitifiketi samatikuletjeni ngemnyaka wa-1981. Bekangumfundzi lotimisela kakhulu emsebentini wakhe wesikolwa. Nobe angesiye lobehamba embili eklasini kepha bekaba kulabo labalishumi labasembili.

Wachubeka nemfundvo lephakeme eNyuvesi yaseWitwatersrand lapho afundzela khona tetimali. Waphotfula ticu takhe kuteTimali. Wacala kusebentaebhange e FNB anaka tidzingo temakhasimende. Bekatsandza kakhulu kudlala libhola lemphebeto ngesikhatsi sekucitsa situnge.

Ube neligalelo lelikhulu emmangweni ngoba esikolweni semabanga laphakeme sasemmangweni wakubo bekakhetsa babili bantfwana labahluphekako ababhadalele bate bacedze kufundza matikuletjeni.

Usishiye emhlabeni ngengoti yemoto mhla tilishumi enyangeni yeNgongoni. Ushiya emhlabeni inkhosikati yakhe nemadvodzakati akhe lamabili langemawele BoTandzile naTiyandza.

Sengatsi umoya wakhe ungalala ngekuthula. Mhlanga Khabako.

## Inkhulumiswano

- Yakha luhlaka lwenkhulumiswano ngembikwekubhala
- Yetfula tikhulumi nendzawo letikuyo nekutsi tikhuluma ngani.
- Veta inkhulumiswano emkhatsini webantfu lababili nobe labangetulu
- Cala ngeligama lesikhulumi kulandzele ikholoni bese ubhala inkhulumo yaso.
- Bhala inkhulumiswano njengoba yenteka, ibuya emicabangweni yetikhulumi, ungabiki
- Sebentisa umugca lomusha kukhomba kutsi sengulesinye sikhulumi
- Khombisa tikhulumi nobe tetsamelilwati kutsi kukhulunywa njani nobe umnyakato lokubakaki ngembikwekukhuluma
- Sebentisa kahle tiphumuti kuveta imiva yetikhulumi. Sibabato, umbuti, nemacashata lakhomba kutsi inkhulumo ayikapheleni.

Sibonelo:

*Make waHluphile utfole incwadzi letsi akaphutfume esikolweni ngoba Hluphile ulwe walimata umfundzi, ngaloko ke kumele abhadale tindleko tasesibhedlela. Nakatfola lencwadzi utfukutsele wagana lunwabu.*

**Lamotsa:** *(amemeta ngekucasuka)* Hluphile, YeHluphile kantsi uhleli ngetindlebe awuva kutsi ngiyakubita.

**Hluphile:** Ma

**LaMotsa:** Ake uphutfume lapho wena!

**Hluphile:** *(Acabanga)* Ngabe seyini make wangimemeta ngalendlela, kukhona lokushaya emanti, ngabe sewutjelwe ngubani ke, futsi bantfu nemanga abo...

**LaMotsa:** Ake usho esikolweni ngakutfumela kutsi uyoba nguMike Tyson wakhona, nhhe? Phendvula, mine angikuyisanga ekhozini yekulwa, ngakutfumela kutsi uyewufundza!

**Hluphile:** Angivisisi make kutsi ukhuluma ngani?

**LaMotsa:** *(Amkhombisa incwadzi)* Fundza lapha utawubona kutsi ngikhuluma ngani!

**Hluphile:** *(Akhamise umlomo lapho abona kutsi incwadzi ikhuluma ngekulwa kwakhe naCalsile).*

**LaMotsa:** Bewumshayelani lomntfwanebantfu ngoba nyalo sewuvuvuke umlomo.

**Hluphile:** Nguye lolongicalile, vele nje lentfombatana leya isibheva.

**LaMotsa:** Manje umtsetfo wesikolwa utsi phindzisela wena uma bakushaya, akusiwe lona bewungifundzela lomtsetfo wekutiphatsa kwebafundzi ngembikwekutsi ngiwusayine.

**Hluphile:** Awusho njalo, batsi sibikele thishela... ngiyacolisa Mvulane ngeke ngiphindze.

**LaMotsa:** Hhayi cha, uganga utsembe kucolisa, buka nyalo ngingene etindlekweni, sekufuna ngicele emsebentini, kute ngiyewulalela letinkinga takho. Waphindza utatibonela.

**Hluphile:** *(Akhombisa kutisola)* ngiyabonga make wami angeke ngiphindze futsi ngicela ungamtjeli babe.

**LaMotsa:** Cha uyihlo ngitawumtjela nje nakabuya emsebentini phela ungumntfwana wetfu sobabili. *(Nakabuya Dlamini LaMotsa wavele wamtjela).*



## **Umsebenti 1Inkhulumo**

Inkhumo nguloko sikhulumi lesikukhulumako labanye balalele. Nobe-keinkhulumo ihlala ilungiselelwe, kukhona timo letidzinga ukhulume ungakatilungiseleli. Tinkhulumo singatetfula emadzilini, emishadweni, emicimbini, emingcwabeni noma emicimbini lapho kuklonyeliswa bantfu khona.

Inkhulumo lenhle nguleyo lengabetelisi bantfu labalalele. Kute inkhulumo ihehe, kufanele ibe ngetintfo letisematseni, tintfo letitsintsasikhatsi lesiphila kuso.

Kuyenteka ngalesinye sikhatsi sikhulumi sifake tintfo letingakadzingeki, kepha utfole kutsi labalalele bayatidzinga. Lolo lwati kufanelelungabi lunyenti kakhulu. Kufuna lutsintseke nje ngaleyo ndlela hhayi kutsi ungate uphume esihlokweni. Inkhulumo kufanele ibahlekise kancane labo labalalele baphindze bachubeke nekulalela lenkhulumo. Akukafaneli-ke kutsi ibe yindze kakhulu. Kufanele itsintse tintfole tiphatselene nemphilo yetfu lamuhla njengengculazi lesitsintsa sonkhe.

Inkhulumo lehlekile ilungiselelwa kusenesikhatsi, kwentiwe lucwaningo loludzingekile. Yetfulwa ngaphandle kwekusebentisa tinsita letitibonwa. Lulwimi lunotsile, kusentjetiswe tinongo tenkhulumo nelulwimi lolungenamaphutsa.

Tikhulumi tiyaye ticaphune emagama latsite latsetfwe kuletinye tinkhulumo tebantfu labadvumile noma tinkhulumo letatiwa mhlaba wonkhe. Kute inkhulumo ibe ngulekahle, levakala kahle, sikhulumi siyaye sisebentise imifanekisomcondvo nemagama lagcizelelako levakalisa kahle inkhulumo yaso. Lokukhulunywako kumele kubalungele labo labalalele, akube yintfo lebatsintsako labafuna kuva ngayo. Ngeke sikhulumi sikhulume nebantfu labadzala njengoba singakhuluma nebantfwana.

Inkhulumo lehlekile inaletinhloso letilandzelako:

- Kwatisa/kufundzisa
- Kuncenga
- Kucitsa situnge/Kujabulisa tibukeli.
- Kukhutsata
- Kwecwayisa

## **Luhlaka/Sakhiwo senkhulumo**

### **Sihloko**

Inkhulumo lenhle nguleyo lapho sikhulumi sinika sihloko lesibumbanako naloku lamenyelwe kona.

### **Kubingelela**

Sikhulumi sibingelela labo labakhona ngetikhundla tabo nobe ngetigaba tabo.

### **Singeniso**

Sikhulumi setfula loku lesitawukhuluma ngako. Umlaleli uyati kutsi sikhulumi sitawukhuluma ngani ngekulalela setfulo senkhulumo.

### **Umtimba**

Sekhulumo setfula umlayeto. Sikhulumi siletsa imibono lehambelana nesihloko kanye nesincumo lasitsetse yena mayelana nalesihloko. Nguleyo naleyo ndzima inemcondvo lobalulekile, imicondvo ayikahlangahlangani.

### **Siphetfo**

Siphetfo lesifishane ngulesinemisho lemincane lemifishane. Tincomo letitsite tingetfulwa kulesiphetfo bese sikhulumi sigcina ngekubonga loyo lohola lilanga lemhlango.

## **Inkhulumo lengakahleleki**

Lenkhulumo lena ungayetfula ngaphandle kwekutilungiselela. Ayilandzeli timiso letibekiwe nobe luhlaka. Ngalesinye sikhatsisikhulumi singate sikhombise ngetinsita letitsite loku lesikhulumangako. Lenkhulumo incika kakhulu elwatini lesinalo sikhulumi nobelucwaningoo lesilwentile sikhulumi. Akukadzingeki kutsi sikhulumisibe nesihloko lesitawukhuluma ngaso. Yinkhulumo lengakalungiselelwa ngako.

## **Umsebenti 2 Inkhulumo lengakahleleki**

Kutawuba nelusuku lwekunika imiklomelo kubo bonkhe bafundzi labatfole imphumelelo ngemaphesenti langemashumi lasikhombisa kuya etulu kuleso naleso sifundvo, wena njengemfundzi losebenta ngekutimisela, ucelwe kutsi ukhulumele liklasi kulomcimbi.

## **Imibiko**

Umbiko nguleminingwane loyetfulako ngalokutfolile nawenta lucwaningo lolutsite. Umbiko ungfaka leminyane imininingwane ngengcikitsinobe sihloko locwaninge ngaso. Esikhatsini lesinyenti emisebentini yetfusiyacelwa kutsi ibhale imibiko ngenchubekelaphambili yemsebenti nobeke letinye nje tigateko letentekile.

## **Tinhlobo temibiko**

### **1. Umbiko lohlelekile**

Lombiko lona ulandzela timiso letitsite letibekiwe futsi kufanele ubike usebentisa lokukhulunywa ngaye (*Third Person*).

Umbiko lokhululekile

Lombiko lona awulandzeli timiso letibekiwe. Lobikako angabhalaasebentisa lokhulumako (*First Person*).

Luhlaka lwembiko lococekile

- Sihloko,
- Singeniso
- Indlela lesentjetiswe nakwentiwa lucwaningo
- Lokutfolakele
- Siphetfo
- Tincomo
- Lusayino lwalobikako
- Sigaba nobe sikhundla salona lobhale lombiko
- Lusuku
- Lokudzingekile nawubhala umbiko lococekile
- Awufinyeteke ucace
- Awucondze ngco kulokubikwako, ungatsemeleti
- Lulwimi alube ngulolwemukelekile lolunenamaphutsa
- Awulandzele luhlaka lwembiko lolwemukelekile. Ake sibuke nasi sibonelo sembiko lohlelekile

## **Sihloko**

Umbiko ngekungaphumeleli kahle kwebafundzi bakamatikuletjeni.

## **Setfulo/Singeniso**

Kulandzela ticondziso tekwenta lucwaningo lwembangela yekungaphumeleli kwebafundzi, lubese luyentiwa lolucwaningo.

### **Indlela lesentjetisiwe**

Labo labangaphumeleli bavakashelwe emakhaya abo kwentiwainkhulumo luhlolo. Nebafundzi labangaphumeleli kulamabanga langephansi nabo bakhulunyisiwe. Kubese kuhlolwa tinsita letikhona tekwelekelela bafundzi kutsi baphumelele Timo tasemakhaya lapho bahlala khona tihlolisiwe.

Lokutfolakele

Labo belibanga lamatikuletjeni kutfolakele naku lokulandzelako.

1. Simo semnotfo sasekhaya sime kabi kakhulu.
2. Kugulelwa batali/kushonelwa batali.
3. Kweswelakala kwetincwadzi esikolweni.
4. Kubete Sineke kwabothishela.
5. Kungefiki ngesikhatsi ngendzaba yekweswelakala kwetigitjelwa.

### **Siphetfo**

Bafundzi abaphumeleli ngendzaba yetizatfu letingetulu kwemandla abo.

### **Tincomo**

Umntfwana lowemukelwa njengemfundzi wakulesikole kufanele kutsi yatiwe imvelaphi yakhe kute atewusitakala, netinkinga takhe tibukisiwe kahle kute asitakale kusenesikhatsi. Tincwadzi kufanele titfolakale esikolweni hhayi kutsi bafundzi batitsengele.

Lusayino

T.G Malambe

B.Z Mohlala

Umbiko Longakahleleki

Timphawu tembiko longakahleleki

- Kute lucwaningo lolwentiwako.
- Umbiko weyame ekuticabangeleni nobe kucagela.
- Lobikako usebentisa lokhulumako "mine, tsine" njll.

Ake sifundze nasi sibonelo sembiko longahleleki

Wota Nendlebe Sikolo Lesiphakeme Kungaphumeleli kwebafundzi belibanga 10

Ngetamile kuhlolisisa lenzaba yekungaphumeleli kahle kwebafundzi belibanga

10. Lenzaba ivisa baphatsi buhlungu lobukhulu.

Lokutfolakele

Kuvakele ngandlebenye kutsi labafundzi labangaphumeleli eluhlolweni lelibanga 10, bayeswela. Labanye batintsandzane, kantsi labanye beswela tigitjelwa.

Tincomo

Kufanele siyifakele tibuko lenzaba yalabantfwana njengoba bangumliba loya embili. Umntfwana ngamunye kumele atiwe kutsi uhlala nabani, kuphi futsi umnyaka usasuka, kute batewukhona kusitakala. Singakhona kubhalela betenhlalakahle kutsi babasite. Kantsi natsi sibothishela singabasita ngoba betfu natsi labantfwana.

Lusayino

T.G Malambe

B. Z Mohlala

## **I-Ajenda nemaminithi**

I-ajenda ikhomba lusuku lwemhlangano indzawo, sikhatsi neluhlalwetihloko letitawudzingidwa emhlanganweni. Iba simemo sebantfu labafanele bete emhlanganweni nendzima labatawuyidlala kulomhlanano.

Emaminithi ngemarekhodi emhlangano lacocekile langatsemeleti, lacacile.

Inhloso yemaminithi kwenta siciniseko sekutsi lokwenteka emhlanganweni kubhalwe njengoba kunjalo yini. Kuyatiwa kutsi bobani labebakhona, labacolisa, labebangekho, kwatsiwani, kwancunywa kutsini, lokwatsiwa kutawentwa bobani.

Kubalulekile kutsi kushiwo kutsi umhlangano wabobani.

## **Sibonelo se-ajenda nemaminithi**

Kumenywa bafundzi belibanga lelishumi 10D

Indzawo : Eklasini ka 10D  
Lusuku : 15 Lweti 2012  
Sikhatsi : 10h00

Luhlelo

1. Kuvulwa.
2. Emavi asihlalo
3. Emalunga lakhona nalangekho.
4. Kufundvwa kwemaminithi
5. Lekuvuka emaminithini
6. Umsebenti welusuku
  - a. Bafundzi labangeti esikolweni onkhe malanga
  - b. Kungamakwa kwemsebenti webafundzi
  - c. Bafundzi labangahloniphi bothishela
  - d. Emasu ekutsi siphumelele sonkhe eluhlolweni
  - e. Luhambo lwetfu loluya kaSikhukhuza
6. Lusuku lwemhlangano lotako
7. Kuvala

### **Nasi sibonelo semaminithi:**

Emaminithi emhlangano webafundzi belibanga 10 base museni secondary school kulungiselela umcimbi wekuphela kwemnyaka

#### **1. Kuvulwa kwemhlangano**

Wavulwa ngusihlalo ngemthandazo.

#### **2. Kwemukelwa**

Sihlalo, wemukela emalunga labekhona.

#### **3. Emalunga labekhona**

Onkhe emalunga bekaphelele.

#### **4. Kufundvwa kwemaminithi**

Afundvwa abuye emukelwa

#### **5. Lokwavuka emaminithini:**

Ngabe litseni libandla lelengamele sikolo I SGB ngekulungiswa kweluphahla loluphephukile nemafasitelo lephukile.

Latsi kuleliviki leletako ngalesihlanu

## 6. Umsebenti welusuku

Bafundzi labangeti onkhe malanga esikolweni Kwancunywa kutsi Kutawubitwa batali kukhulunywe nabo kutsi batise sikolo uma umfundzi angeke ete esikolweni banike tizatfu letivakalako.

Kungamakwa kwemsebenti wasekhaya

Savumelana Sitawubikela thishela weliklasi letfu kutsi sikhatsi lesinyenti, kuletinye tifundvo umsebenti wasekhaya asimakhelwa.

6.3Bafundzi labangahloniphi bothishela

Laba bayahlaza liklasi, nabo kwatsiwa kutawubitwa batali babo uma ngabe abantjintji emva kwekukhulunyiswa nguthishela weliklasi letfu.

6.4 Emasu ekutsi siphumelele sonkhe ekupheleni kwemnyaka

Kwakha emacembu ekufundza uma sikolo sesiphumile njengebafundzi belibanga 12

Kwacelwa sikolo kutsi sinake kuphepha kkwetfu.

Satsi sitawusebentisa emaphepha eluhlolo lwelwendlulile netimphendvulo

6.5uhambo loluya kaSikhukhuza

Onkhe emalunga asabhadele.

Lusuku kumhla titine enyangeni yeNyoni

## 7 Lusuku lwemhlangano lotako

Mhla titimbili enyangeni yeMphala 2012, nakunetingucuko sitanatisa.

## 8. Kuvala

Umhlangano wavalwa ngemthantazo lowabekwa ngumholi weliklasi.

### Sihlatiywa (irivyu)

Setfulwa nangabe ufundza libhuku, ubukela lifilimu, ubukela umdlalo webhola, ulalela umdlalo wemoya njll.

Sihlatiya sihlole ngenhloso yekwengeta lwati, imibono nobe sihlabe lokutsite nobe sikhipe lokutsite kute lomsebenti wemukeleke.

Kulesinye sikhatsi sihlatiya kute sihehe labanye kutsi bafune kufundza lelibhuku, nobe kubukela lifilimu njll, kuya ngekutsi yini lena lehlatiywako.

Tidzingo

- uveta tiphakamiso takhe ngemsebenti lodvvetjiwe, lifilimu, libhuku nobe umdlalo.
- Kunikwa imibono netincumo ngemsebenti lowetfuliwe
- Kuhlatiya kumele kucondze ngco
- Kunikwa leminingwane lelandzelako: ligama lembhali, umhleli, sihloko semmcwadzi/umsebenti, ligama lemshicileli, Inkampani lekhicitako uma kudzingeka
- Lusuku lelishicilelwe ngalo
- Sifinyeto sesakhiwo sendzaba nobe lifilimu
- Ingcikitsi

### Sibonelo:

Bengibukela lifilimu lelashicilelwa ngemnyaka wa 2006 linesihloko lesitsi *Akeela and the BEE*. Licondziswa ngu Doug Atchinson Kulelifilimu kunentfombatana ligama layo nguAkeela. Lentfombatana beyinelikhono lelisetulu lelupelomagama. Belipela cishe onkhe emagama kahle uma thishela abanika umsebenti wesipelingi. Kutse ngalelinye lilanga thishelanhloko wacela kutsi angenele umncintiswano lobitwa ngekutsi Spelling BEE. Akeela akatange asheshe akwemukele loko ngoba esaba kutsi bangani bakhe bawuhlekisa ngaye. Ugcine avuma kusingenela, kepha inkinga lenkhulu kwaba kutsi make wakhe Tanya Anderson akatsandzi kutsi ente lomncintiswano.

Wachubeka nawo unina angati, wafola Professor Larabee kutsi amceceshe. LoProfesa bekangamceceshi ngemagama kuphela kepha bekamnika indlela yekuphumelela. Watsi

lokusenta sesabe ngulokutsi sinawo emandla lamakhulu ekuphumelela, asesabi kwehluleka, sitesaba tsine. Akhile bekachudzelana nabo Dylan najavier.

Batali baDylan bebangafuni abe nelitfuba lekudlala kepha labebakufuna bekukutsi aphumelele kulomncintiswano kukuhle nobe kukubi. Bo Akeela baya edzinlini lemngani wakhe Javier lekugubha lusuku lwekutsalwa, Dylan yena uphisheke ngekupela. Lelifilimu leli libaluleke kakhulu kutsi tsine bafundzi. Sifundza kupela kahle emagama, siphindze sifundze kubeketelela timo lesihlangana nato. Siphindze sifundze kutsi impumelelo yakho ayibi yakho wedvwa kepha iletsa intfokoto kulabo lohlala nabo emmangweni. Umbhali wente kahle kutsi baphumelele ngekulingana boDylan na Akeela kukhomba kutsi labanye bayaphumelela ngekutsi bagcile kuleyontfo labayentako, kanjalo uyaphumelela nobe utinika sikhatsi sekuphumula wente letinye tintfo letiphumuta ingcondvo.

### **Umsebenti 1 Kubhala sihlatiywa sefilimu**

Ngemagama langabi ngaphasi kwalange 80 kepha angabi ngetulu kwala-120 bhala sihlatiywa sefilimu lolibukele kulamalanga.

### **Sihlelwa i-edithoriyali**

Sihlelwa siveta imibono letsite lebhaliwe kungaba sephephandzabeni nobe ephephabhukwini. Umbhali usibhala kute avete imibono yakhe.

Sihlelwa sinanati tidzingo letilandzelako:

- Sikhuluma ngendzaba ledvumile
- sinika imibono netincomo
- siheha tetsamelilwati kutsi tivumelane nembono wemhleli
- Kuba nesihloko nelusuku
- Kuba nesingeniso, siphetfo nobe umtimba
- Sibonelo

### **Bontsanga yetfu bangaba nemtselela longanani ekusebentiseni tidzakamiva letinjenge tjwala?**

#### **Thabile nkosi**

Kulamalanga bafundzi basheshe bacale kunatsa kunalokwejwayelekile. Bavame kuyenga batali babo batsi baya kuyewufundza ekhaya kabomngani. Nabefika lapho kuba nelidzili letjwala, kuba ngumchudzelwane kutsi ngubani lokhona kunatsa tjwala lobunyenti ngesikhatsi lesifishane. Nawubabuta kutsi yini banatse tjwala babancane kangaka bavele batsi banyenti bantfu labasheshe bacale kunatsa emhlabeni, kantsi naletikhangiso tetjwala tinyenti kakhulu ngiko nako baheheka.

Lokulandzela bontsanga wente intfo lembi akusiyo indlela lemukelekile yekuphila. Kuphococelelwa bontsanga kutsi wente lokutsite kwenteka lapho bontsanga yakho bakuphococelela kutsi ucabange nobe utiphatse ngendlela letsite lefunwa

ngibo. Lokuphococelelwa kungaletsa tingucuko letinyenti letimbi emphilweni yemuntfu. Phela bontsanga ubatfola esikolweni, uphindze ube nabo emmangweni. Umfundzi losebangeni lelishumi usengakabhadli kahle ehloko kutsi angasheshe akubone kutsi bontsanga bayamdukisa, yena ubona enta intfo letawujabulisa bangani bakhe kute naye emukeleke kulelicembu. Banyenti bantfwana labetamako kumelana nekuphococelelwe kepha babitwe ngemagama lakhomba kutsi batehluleki, futsi balibele abakhoni kwenta tintfo letinsha.

Yintfo lembi kutsi bafundzi bachubeke banatse tjwala nobe bayati imitselela yekunatsa tjwala. Kuncono umfundzi akhetse bangani labaphila imphilo lefana

neyakhe lehambisana nemagugu lanawo  
ngoba kutawuba lula kuphilisana  
nabo. Bona laba labaphila imphilo  
lencomekako bangasita kutsi babe

tibonelo kulaba lesebanikele ngemphilo  
yabo etjwaleni.  
Nebatali kumele beluleke bantfwana babo  
bakhone kumelana netimo  
tekuphocelelwa bontsanga.

### **Umsebenti 2 Kubhala sihlelwa**

Kunendzaba lesematseni ngekutiphatsa kwelusha. Bhala sihlelwa lotasitfumela ephephandzabeni langakini. Sihlelwa akho sibe ngemagama langabi ngaphasi kwe-80 kepha angabi ngetulu kwe—120.

### **Athikheli yeliphephandzaba**

I-athikheli yeliphephandzaba nobe liphephandzaba iyindlela yekuletsa lwati, ingucuko, imininingwane letsite mayelana naloko umhleli lafuna kukwendlulisa nobe lafuna kukukhangisa. Umhleli angasebentisa ifonti lehlukahlukene, imibala lehlukahlukene futsi legcamile, imidvwebo lehlukene kugcugcutela, kutsengisa umcondo lokutsite. I-athekhili yehlukaniswe katsatfu, singeniso, umtimba nesiphetho.

Lulwimi lolusetjentiswako lufanele lubete emaphutsa elulwini, futsi luvakale mbamba

### **Bayahlupheka bantfwana bemantfombatana labahamba kulendlela leyendlula ehlatini**

#### **Sive Siyandza Ntfulini**

Bantfwana labanyenti labafundza  
esikolweni lesiphakeme sasePhumlile  
labahamba ngetinyawo basengcupheni  
yekutfunjwa nekudlwengulwa. Lendlela  
inesihosha lesinelihlati  
lelisabekako. Ngisho umdzala uva  
kuphakama tinwele nawengca  
kulenzawo. Kusukela kwatfunjwa  
kwabulawa intfombatana kuleliviki  
leliphelile, bantfwana sebayesaba kuya  
esikolweni. Labanyenti sebajika endleleni  
babuyele emakhaya ngoba abati kutsi  
kutakwentekani.

Ngalesihlanu lowengcile lenye  
intfombatana beyilandzelwa yindvodza  
lephetse silimato kuyo yona lendlela. Yatsi  
lapho itsi iyahlasela lendvodza  
kwachamuka imoto yathishelanhloko,  
lwase luyaphatamiseka loluhlelo  
lwayo. Yasindza kanjalo lentfombatana.

Tibusile, lenye Intfombatana leneminyaka  
lelishumi nesihlanu, Itsi " minesengitfuswa

### **Umsebenti 3 Athikheli yeliphephandzaba**

Bhala i-athikheli yeliphephandzaba ngenkinga lekhungetse ummango wangakini.

nayintsetse letindizelako ngenca  
yaletigigaba letenteka kulendlela, angikate  
ngativa ngesaba kangaka emphilweni  
yami. Angisakhoni nekufundza  
nangicabanga kutsi kusefanele ngibambe  
lecondze ekhaya.

" Impela labatfumbi nalabagagadleli  
bacondzene ngco nebafundzi  
basePhumlile. Singativela njani siphephile  
nangabe sekungemahlandla lamabili  
lalandzelanako ngesikhashana lesifisha  
sihlaselwa.

Umngani waTibusile longusobahle utsi  
yena batali bakhe bammikisa kulesinye  
sikolo kulomnyaka lotako." Nobe  
ngitsandza ePhumlile, uma kuphuma  
kwami kusho kuphepha kwami,  
ngikulungele kuya kulesinye sikolo nobe  
bekungasiso sifiso sami."

## **Ikholumu yeliphephandzaba**

Ikholumu yeliphephandzaba icishe ifane nje ne-athikili yeliphembandzaba. Lokwehlukile kutsi yona ibhalwa ngumuntfu lonelwati lolujulile ngaloko labhala ngako, ayibhalwa nje nobe ngubani.

Dokotela angabhala ngeTemphilo  
Umshayeli wetindiza angabhala ngekushayela indiza.  
Umfundisi angabhala ngetenkholo  
Umpheki angabhala ngetekupheka

Sibonelo:

## **Kunakekela ematinyo takho**

### **Ikholumu ya Dokotela Sivesini Mdluli**

Tsine bodokotela bematinyo sitsi indzima lenkhulu ekunakekeleni ematinyo idlalwa batali. Batali kumele batjele bantfwana kutsi kumele bahlale njalo bacubha ematinyo abo lokungenani kabili ngelilanga. Loku kuvikela kungcola lokubese kwakhela lapha ematinyweni bese kubanga kubola kwematinyo. Kucubha ematinyo nekukhipha kungcola ngemtiya wekukhipha nekuhlolwa ngudokotela wematinyo kanye ngemnyaka kungavikela kubola kwematinyo. Nawungavani ne drill yadokotela kuncono ugweme kudla tintfo letisheshe tibolise ematinyo, ucubhe lokungenani kabili ngelusuku uphindze uyewuhlolwa ngudokotela wematinyo.

Uma ucubha ciniseka kutsi kungcola lokubonakalako uyakususa ematinyweni, ikakhulukati uma ucedza kudla. Kumele usebentise sichubhamatinyo

lesineflouride. I flouride iyancomeka kakhulu ekususeni lokungcola nekuvikela kubola kwematinyo. Kuchuba kwenta tinsini tihlale tiphilile.

Munye kulabalishumi uvame kutsi abe netartar ematinyweni. I tartar kungcola lokucine kakhululokuwalimata kakhulu ematinyo kantsi futsi akusuki kalula. Kuvikela, singavikelangekusebentisa ticubhamatinyo letimelana nayo.

Uma unematinyo lasheshe aphantime uma ahlanguka nekushisa nobe kubandza, tfole sicubhamatinyo lesenta ematinyo amelane nekushisa nobe kubandza. Kantsi kubalulekile kutsi utfole luvo lwadokotela ngoba kuyenteka kulesinye sikhatsi kuphantime ngenca yenkinga lenkhulu lekhona, lengabonwa ngudokotela wematinyo.

### **Umsebenti 4 Kubhala ikholamu**

Ephephandzabeni unekholomu yakho yeTemasiko. Bhala ikholomu yakho yaleliviki ngekubaluleka kwemasiko esiveni seMaswati.

### **Ibrosha**

Ibrosha libhukwana lelisinika lwati mayelana nemkhicito, imisebenti letsite nobe tindzawo letitsiteletinika tinsita nobe tekungcebeleka

### **Tidzingo tebrosha**

- Sifundza lapho lendzawo itfolakala khona
- Lidolobha lenitfolakala kulo
- Umkhicito/Indzawo
- Buhle bemkhicito nobe Indzawo
- Emazinga ekushisa
- Tekuchumana.



Sibonelo sebrosha:

### **Sikolo lesikhulu ivusalitsemba**



**LIGAMA LESIKOLO: VUSALITSEMBA HIGH SCHOOL**  
**SICUBULO: Silwela imphumelelo yawo wonkhe umntwana.**

#### **ESIFUNDZENI SASEMPUMALANGA**

Lidolobha: White River  
Tinombolo tekuchumana: 013 750 3321  
Likheli P. Box 1 WHITE RIVER 1240  
I-Imeyli: vusalitsemba@gmail.com

#### **Sidvume ngemfundvo lesezingeni lelisetulu**

- Wonkhe umfundzi uyanakekeleka
- kaMatikuletjeni kuphumelela wonkhe umntwana yonkhe minyaka
- Sinabothishela labaceceshiwe
- Sinetinsita letenele tekufundza
- Sitfutukisa emakhono ebafundzi eklasini nakutemidlalo
- Sineluhlelo lwekusita labahluphekile ngetimali.
- Itheknoloji iyasetjentiswa njengencenye yekharikhulamu
- sifundza nangcondvomshini

#### **Takhiwo tesikolo**

- Sinetinkhundla letinkhulu letehlukene tetemidlalo
- emalabolatri esayensi, elulwimi, abongcondvomshini
- Sinelihholo lelikhulu lapho sihlanganela khona ngetidzingo letehlukahlukene
- Kunengadzi yetibhidvo
- Sinenzawo yekufundzela kushayela
- Kunelikhishi nelikamelo lekudlela

#### **Kuchumana nebatali ngemiphumela yebantwana**

- Siyawatfumela emaphothifoliyo ebantwana njalo ngethemu.
- Sitfumela emakhadi emibiko yemphumelelo yemfundzi
- Siba nemhlangano webantwana, batali, nabothishela lapho sibika khona imiphumela yawo onkhe emabanga.

**Letsa umntwana wakho evusalitsemba angeke utisole!**

**Umsebenti**

Bhala ibrosha ukhangise sikolo lofundza kuso kute uhehe bafundzi labachamuka etindzaweni letehlukahlukene.

## Sehluke 4 Liphepha lelisibonelo

### Liphepha lesitsatfu lelisibonelo

Siswati lulwimi lwasekhaya

Luhlolo lwekuphela kwemnyaka  
Sikhatsi 2 ema-awaEmamaki: 100  
Ticondziso kulabahlolwako

#### Sigaba A: A Tindzaba

#### Sigaba B: Ematheksthi emibhalombiko

#### Ticondziso

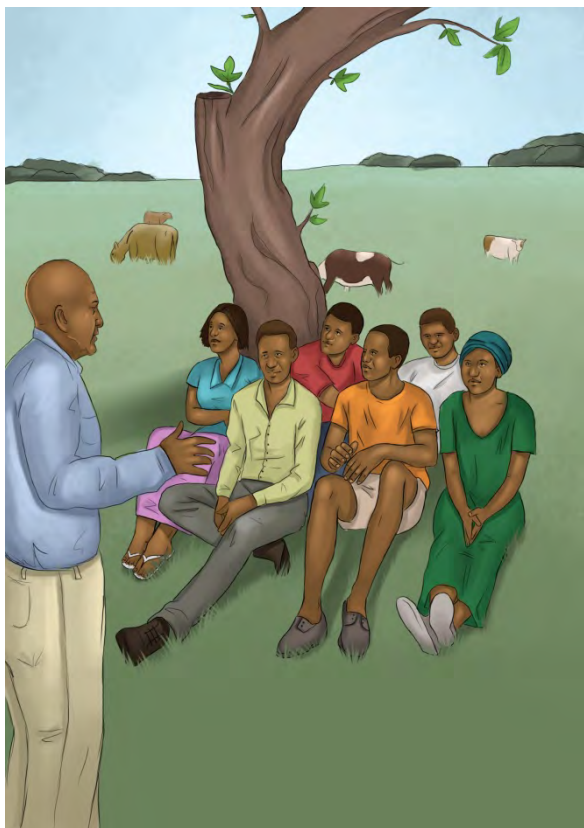
1. Labahlolwako balinzelwe kutsi baphendvule munye umbuto esigabeni A, namibili imibuto esigabeni B
2. Cala ngeluhlaka ngembikwekubhala indzaba esigabeni A.
3. Cala leso naleso sigaba ekhasini lelisha, udvwebele emva kwaleso naleso sigaba
4. Bhala ngebunono nangesandla lesifundzekako
5. Caphelisisa lupelomagama nendlela yekwakha imisho.

Bhala indzaba ngasinye saletihloko letilandzelako ibe ngemagama langabi ngaphasi kwe-240 kepha angabi ngetulu kwe-290.

1. Bhala Indzaba legcina ngalamavi latsi "Lengakubona, ngitawukukhohlwa ngifile."
2. Bhala indzaba lenesihloko lesitsi Umsakati lengimtsandzako.
3. Utsini umbono wakho ngekutsi bantwana labancane labafundza emabanga laphasi batsemgelwe bomakhalekhikhini?
4. Bukisia lesibonwa lesilandzelako bese ubhala Indzaba (lelandzisako).



5. Bukisisa lesibonwa lesilandzelako bese ubhala Indzaba (Lechazako)



6. Bukisisa lesibonwa lesilandzelako bese ubhala indzaba letsatsa luhlangotsi.  
7.



## **Sigaba B**

Khetsa kubili kuloku lokulandzelako bese ubhala ngako ngemagama langabi ngephasi kwala-100kepha angabi ngetulu kweli-120.

### **1. Inkhulumomphendvulwano**

Kulahleke imali yalomunye umfundzi eklasini lengemarandi lalikhulu nyalo basolela kuwe ngoba nawe bakutfole unemarandi lalikhulu esikhwameni sakho. Asive inkhulumo leyaba khona emkhatsini wakho nathishela nawumchazela kutsi lemali akusiyo yalona lolahlekelwe ngeyakho. [20]

### **2. Umlandvomufi**

Kushone sihlobo sakho lobewusitsandza kakhulu. Emndenini wakini babone kutsi wena unelikhono lekubhala umlandvomufi njengoba bake bawubona emabhukwini akho esikolo. Bacele kutsi ubhale umlandvomufi walesihlobo sakho. Bhala lomlandvomufi.

[20]

### **3. Incwadzi yemtsetfo**

Utsenge titja kaPresless, bakutfumelela tona ngeliposi. Utse uyavula wakhangwa tincetu nje, konkhe lokusekhatsi kuphihlikile, awusaboni nobe bekulipulete, nobe inkhomishi. Bhala incwadzi ukhonondze ngalesehlakalo. [20]

### **4. Sihlatiywa**

Bewubukela lifilimu lelisandza kushicilelwa. Bantfu basengakati ngalo, wena ubona kungatsikuhlebontsanga yakho eklasini balibukele. Bhala sihlatiywa salelo filimu lotawusibeka ebhodini letatiso emtatjeni mabhuku wesikolo sakho. [20]

## Sehluke 5 Tinkondlo

### Tembhalo imibhalo efundvwa eklasini lonyaka

Naku lokufundvako kutemibhalo lonyaka

- Tinkondlo
- Emanoveli/Temdzabu
- Umdlalo

### Imibuto lengaba lusito

#### Tinkondlo

#### Lokumele kwatiwe bafundzi ngesakhiwo sangephandle senkondlo

Sakhiwo sangephandle sifaka ekhatsi loku lesikubona ngemehlo kulenkondlo lokungadzingi site sifundze sijule lokufaka ekhatsi, (i-phethini) tindzima, imigca, emagama, imvumelwano, luchumano, Sifanamsindvo (sifanangwaca, sifanankhamisa), sidvonsamoya, (isuzuri), sicedzelelamcondvo (i-enjambamenti), imphindza nemphindvwa.

#### Yini iphethini yenkondlo?

Iphethini sisho kutsi inkondlo inatingaki tindzima, imigca, emagama kulowo nalowo mugca. Iphethini ingaba ngulehlelekile nobe lengakahleleki. Sitsi ihlelekile uma imigca kuleyo naleyo ndzima ilinani lelilinganako.

#### Tindzima

Indzima yenkondlo sisho linani lemigca lelilandzelanako libumbe umcondvo munye. Tindzima tenkondlo tehlukanisa imicondvo leyehlukene kepha lenekubumbana.

#### Sibonelo:

Inkondlo letsi Lilanga inetindzima letine, indzima ngayinye inemigca lesihlanu, umugca ngamunye unemagama lasukela kulamabili kuya kulamane.

#### Imigca

Inkondlo ibhalwe yehluka kuleminywe imibhalo, inemigca lehlelwe ngendlela leyehlukile kunaleminywe imibhalo. Lemigca ngiyo leyakha indzima.

#### Emagama

Emagama lakha inkondlo abalulekile ngoba akhombisa kutsi sonkondloupumelele kanganani kuveta umcondvo wayo ngeemagama lambalwa. Linani lelincane lemagama liveta bunkondlo. Uma sekamanyenti sekuba ngatsi yiprozi.

#### Yini imvumelwano enkondlweni?

##### Imvumelwano

Imvumelwano buciko bembongi bekuphindzaphindza emalunga ekucaleni, emkhatsini nasekugcineni kwemugca ngenhloso yekugcizelela umcondvo lotsite nobe kuletsa sigci enkondlweni. Kunemvumelwano sicalo, imvumelwanomkhatsini, imvumelwanosigcino. Asinake: Yonkhe imvumelwano iyeca, seca munye umugca.

Imvumelwanosicalo lena yimvumelwano letfolakala ekucaleni kwemugca.

#### Sibonelo:

Ngivumele ngigacatele ngemadvolo  
Ngikhasele elangabini lakho  
Ngikuphe lingekhatsi lenhliyo yelutsandvo

**Lomfundvo**

Imvumelwanomkhatsini itfolakala emgceci munye lapho emagama lasemkhatsini agcina ngemalunga lafanako.

**Sibonelo:**

Engcondvweni,enyameni nasemphefumulweni  
Ngikhatsatekile,ngijabhile kepha ngilindzile  
Ngaelinye lilnga ngitakubona mbali yami.

Imvumelwanosigcino

Lena yimvumelwano letfolakala ekugcineni kwemugca, nayo ngalokunjalo iba lilunga nobe emalunga. Kuyo inkondlo letsi Lomfundvo sitsandvwa sami.

**Sibonelo:**

Ngikuphe lingekhatsi lenhlitiyo yelutsandvo  
Ngikuphe lingekhatsi lekujula kwengcondvo.

Ngihole mgudvu wenhlakanipho  
Ngihambe ngemvila wenhlonipho

**Luchumano**

Luchumano lusu lekuphindvwa kweligama leliphelile emigceci lemibili nobe lengetulu endzaweni lelandzelanako. Lokuphindvwa kwaleligama kungaba sekucaleni emkhatsini, nasekugcineni kwemigca lemibili yenkondlo. Sibonelo sitsetfwe kuyo inkondlo letsi Lomfundvo sitsandvwa sami.

Lebhalwe ngu NP Mabaso likhasi 11 Kuphuma Kwelilanga.

Luchumanosicalo

Ngikuphe lingekhatsi lenhlitiyo yelutsandvo  
Ngikuphe lingekhatsi lekujula kwengvondvo.

Ngivumele ngikhanget'imphilo  
Imphilo yekujula kwemphilo  
Imphilo yenjula yekuphila

Luchumanosigcino

Sibonelo:

Ngivumele ngikhanget'imphilo  
Imphilo yekujula kwemphilo

Luchumanomkhatsini

Loluchumano lutfolakala emkhatsini yemigca kusigaba sinye

**Sibonelo**

Ngikuphe lingekhatsi lenhlitiyo yelutsandvo  
Ngikuphe lingekhatsi lekujula kwengcondvo.

Luchumanololutjekile

Loluhlobo lwekuchumana luvela ngekutsi ligama lekugcinwe ngalo emgceci longenhla kubuye kucalwe ngalo emgceci lolandzelako nobe kucalwe ngalo emgceci wekucala kugcinwe ngalo emgceci wesibili.

Sibonelo:

Ngivumele ngihlobe  
Ngihlobe ngihlomise sive.

Ngivumele ngikhanget'imphilo  
Imphilo yekujula kwemphilo

Naka: lonkhe luchumano luyeca, seca umugca munye.

Yini umehluko lokhona kumvumelwano neluchumano?  
Luchumano kuba ligama leliphelele, imvumelwano kuba lilunga nobe emalunga, hhayi ligama leliphelele.

### **Yini i-enjambamenti nesidvonsamoya?**

Lenjambamenti( Sicedzelelamcvondvo)  
Sonkondlo ubhala inkondlo yakhe imigca ilandzelana ngaphandle kwekusebentisa tiphumuti.Kulesinye sikhatsiangasisebentisa siphumuti kepha lomcondvo uphelele emgceni lolandzelako.Loku ukwentela kukhomba kutsi umcondvo losemgceni longenhla uphelela emgceni lolandzelako.Ngiko kutsiwa sicedzelelamcondvo.

### **Sidvonsamoya (isuzuri)**

Sitfolakala lapho sonkondlo asebentisa tiphumuti emgceni, kungaba lisu lekuphumula, uhlabe likhefu, nobe kuletsa sigci enkondlweni

Enkondlweni letsi inkhundla iyashiyelwana Mabaso Np pg 35  
Gudluka mnaketfu, gudluka  
Kadze kwas'uhleti kuleso sihlalo,  
Sewuye wamila netimphandze,  
Kuleso sihlalo, kuleyo nkhundla bo

*Inkhundla iyashiyelwana Mabaso N.P likhasi 35 Kuphuma kwelilanga.*

### **Sifanamsindvo**

Sifanamsindvo  
Lapha sikhuluma ngemsindvo lowentiwa tinhlavu temagama emigceni,Lemisindvo yenta sigci lesimnandzi.Lemisindvo ingaba wabongwaca nobe bonkhamisa.

### **Sifanangwaca**

Lomsindvo udalwa kuphindzeka kwabongwaca labafanako emgceni munye

Sibonelo enkondlweni letsi Ngikhoselise JJ Thwala (likhasi Kuphuma kwelilanga)  
Lapho tiphepho letiphephulako  
Tisiphula timphandze tetihlahla

### **Sifanankhamisa**

Lomsindvo uvela ngekuphindzaphindza nkhamisa lofanako emgceni munye.

Sibonelo

Nklichihhh! Nklichihhi!

Khilikitsela nabo etikhilikitsini.

Mgalafawu NP Mabaso Kuphuma kwelilanga likhasi



## **Yini imphindvwa, imphindza, nemphindzamcondvo, kunye kwehluke ngani kulokunye**

### **Imphindvwa**

Kuleso naleso sigaba sonkondlo ucala nobe apheetse ngemugca lofanako.

### **Sibonelo:**

Enkondlweni letsi Mgalafawu, NP Mabaso likhasi 32 Kuphuma kwelilanga sonkondlo ucala tonkhe tindzima ngemugca lotsi Nklichihhi! Nklichihhi

Enkondlweniletsi Bewutawutsiniindzima yekucala neyesitsatfu icala ngeligama lelitsi bewutawutsini. Lebhalwe ngu J Stoltz likhasi 41 Kuphuma kwelilanga

Bewutawutsini...

### **Imphindza**

Lona ngumsindvo lofanako emgceeni munye sibonelo sitfolakala enkondlweni letsi Nyawo lwami. Indzima yesibili

Nyawo! Nyawo! Nyawo lwami.  
Wabukek'ukhala yni?  
Ngab'ubulawa ticatfulo?  
Pho ngabe yini?

### **Yini lekumele bayati bafundzi nabahluta inkondlo?**

Bafundzi kumele bati luhlobo lwenkondlo, lokushiwo yinkondlo, kujula kwenkondlo, ingcikitsi, umoya, sakhiwo sangaphandle, nesakhiwo sangekha  
Sitawukhumbutana kafishane ngetinhlobo tetinkondlo, sifundze ngalokushiwo yinkondlo, kujula kwenkondlo, ingcikitsi, umoya kanye nesakhiwo sangekhatsi.

### **Tinhlobo tetinkondlo**

Bafundzi kumele bati kutsi inkondlo ngabe iyisonethi, ilirikhi, isathaya, inkondlosililo, inkondlomlandvo, inkondlo yetenkholo, inkondlo yesimanje nalelandzisako.

### **Lokushiwo yinkondlo**

Lapha sisuke sikhuluma ngemcondvo losebaleni, utfolwa nobe ngubani lofundza inkondlo ngoba asijuli, sichaza sisebentisa inshokutsi lesebaleni yemagama. Sibonelo inkondlo letsi Makoti. Umcondvo losebaleni kutsi kukhulunywa ngamakoti lotawendza, kumele ente konkhe lokwentiwa bomakoti labendzile.

### **Umcondvo lojulile**

Nasikhuluma ngemcondvo lojulile, sikhuluma ngemcondvo lofihlakele, kute sitfole lomcondvo kumele sicabange sijule, lokujula kwetfu kumele kuhambisane nalamagama lasetjentiswe enkondlweni.  
asinhlanhlatsi. Sibonelo, Kulenkondlo lengenhla, nasijula sitawusho kutsi kukhulunywa ngemfundvo,

### **Ingcikitsi**

Ingcikitsi nguloko lokususe sonkondlo phasi kutsi abhale lenkondlo. Uma sewufundze konkhe lokusenkondlweni wena ubese usonga ngeligama linye lelisembulelo kutsilenkondlo ingaloku, njengemfundvo, intfutuko, itheknoloji, tikhali, tigitjelwa, umnotfo njll.

### **Umoya wenkondlo**

Umoya wenkondlo usho lasuke lakuso sonkondlo uma abhala lenkondlo. Ngabe uyibhaleachutjwa yinjabulo, kukhatsateka, lusizi. Yindvumiso, kudvumala njll

## **Tinongo tenkhulumo**

Tinongo tenkhulumo ngito letisakhela imifanekisomcondvo tiffombe letakheka emcondvweni wetfu ngekufundza emagama latsite Singahogela, sinambitse, sibone, sive, sifise kutsintsa ngenca yesitfombe lesakheke emicondvweni yetfu. Tiyagcizelela nobe tente intfo siyibone kancono siyivisise. Umfundzi kumele akhone kusho kutsi mfanekisomcondvo muni loletfwa sinongo lesitsite. Nati tibonelo:

Sifaniso- kufaniswa tintfo letimbili letehlukene kube kunebudlelwano lobutsite emkhatsini wato,  
Sibonelo  
Lamuhla ngikhala sililo safutsi  
Ngikhala ngitithulisa njengentsandzane.

Lamuhla sewuyatisola ngami  
Ungilahlisa kwentfo lengenalutfo.  
Waze wangikhohlisa sifanisongco-Kufaniswa tintfo letimbili letinetimphawu letifanako.  
Sibonelo: Enkondlweni letsi Mphandze yesono, imali ifaniswe ngco neMphandze yesono, ngoba vele konkhe lokubi kuvela kuyo.  
Maye simnandzi lesishwala  
Wotani maSwati nitewukudla lesishwala  
Tintfombi nemajaha wotani bo  
Wotani nitewukudla lesishwala simnandzi bo.  
Imfundvo ifaniswe ngco nesishwala.

Simnandzi lesishwala X.L Ntuli likhasi 10 Kuphuma kwelilangakumuntfutisa, Intfo lengaphili inikwa tento nobe tifo temtimba temuntfu. Kuyo inkondlo letsi mphandze yesono, sonkondlo unike imali tento tebantfu, ngako uyimuntfutisile  
Kunini Mphandze yesono  
Ubatfokotisa, ubajabhise  
Ubabusisa ubacalekise  
Lokutsandzako uyamtondza  
Lokutondzako uyamtsandza

Imphandze yesono JJ Thwala Kuphuma Kwelilanga likhasi 33  
Sifutamsindvo ligama leliveta umsindvo lovetwa nguloko lokwentekako njengajkulenkondlo letsi Lulaka lwemvelo

Phohlo phohlo emabhuloho  
Hlhiphi hlhiphi tindlu  
Hhovo hhovo tindlela tebantfu

*Lulaka lwemvelo* E.E. Shabangu (likhasi 22 kuphuma kwelilanga)  
kwentasasilwane- kunika intfo tento nobe tifo temtimba tesilwane.  
Sibonelo uma kufa singatsi kunetidladla netinzipho leticijile neludvonsi, sisuke sikunika timphawu tebulwane loko sitsi kwenta sasilwane.  
sihabiso -kubeka intfo ngendlela leyenta ibukeke iyinkhulu nobe iyimbi sibonelo:

Inhlitiyo yami iyopha njalo nangikhumbule wena mntfwanakitsi.  
*Ngicolele ME Masina likhasi 30* kuphuma kwelilanga.  
Lapha sonkondlo ukhombisa kutsi inhlitiyo yakhe iva buhlungu lobukhulu kakhulu hhayi kutsi iphuma ingati. Uhabisile kute agcizelele lobuhlungu.

Inhlonipho- usebentisa ligama lelimnadzi lelikhomba inhlonipho. Ligama lelitsi emadliza lihloniphisa lelitsi emathuna/emangcwaba.

Wo hhe! Kwami kwetandla

Ngilala benyoni

Kulelifihle inongwane yami

Lelifukamel'emadliza alabadzala.

esikhundleni salelo lehlilabako.

*Benyoni, Thwala JJ likhasi 37 kuphuma kwelilanga*

Secamagama- lapha kweciwa emagama ngenhloso yekuveta bunkondlo.

Wo kwami kwetandla ngilala ( ) benyoni (Kweciwe ligama butfongo)

( ) Kulelifihle inongwane yami. (kweciwe ligama live)

kucatsanisa- lesi sinongo lesibeka emagama abukane kute kuvele

umehluko emkhatsini wawo. Enkondlweni letsi Mphandze Yesono JJ Thwala

Kunini Mphandze yesono

Ubatfokotisa ubajabhise,

Ubabusisa ubacalekise?

Lonawe ukhala sililo

Lokweswele ukhala sililo

Lokutsandzako uyamtondza

Lokutondzako uyamtsandza.

*Mphandze yesono J.J. Thwala likhasi 33 Kuphuma kwelilanga*

Umbiti, Kukhuluma nentfo lengaphili kungatsi iyaphilaenkondlweni letsi

Mgwenya utsini ME Masina likhasi 13-14 Kuphuma kwelilanga? Kunemibuto lebutwa umgwenya kungatsi utawuphendvula”

Mgweny'utsini ngikhala?, Utsi ngitsini kodvwa Mgwenya? Mgweny'utsini

nawubutwa?

Siphukuto- kubeka emagama ngendlela lehlane ketelako, njengekutsi wafundza

kakhulu kungako asebenta emakhishini. Lapha kubekwe ngendlela

lehlane ketelako ngoba angeke ufundze kakhulu bese ugcina usebenta

emakhishini ebantfu.

Lokumele kwatiwe ngumfundzi nakatawubhala ngenkondlo lefundziwe nobe lengakafundvwa eklasini.

- Kumele ati luhlobo lwenkondlo
- Kutsi inkondlo ikhuluma ngani. (Umcondvo losebaleni)
- Kujula kwenkondlo (Umcondvo lofihlakele)
- Kubona uhlute bunkondlo lobutjentisiwe ekondlweni.
- Kubumbana Kwenkondlo nesihloko/ kubumbana kwesihloko nengcikitsi
- Luhlobo lwesinongo senkhulumo nekusetjentiswa kwaso ngemphumelelo.
- Kubeka umbono wakho ngengcikitsi
- Kuhluta nobe kuhlatiya kusetjentiswa kwemagama latsite ngemphumelelo.
- Simongcondvo senkondlo nekukhetseka kwemagama. Ucabanga kutsi sonkondlo ulisebentise kahle leligama lelitsite nawubuka simongcondvo salenkondlo.
- Umoya wenkondlo
- Chaza emasu lasetjentiswe ngusonkondlo ekwetfuleni ingcikitsi.
- Ufuna kusitjela ini sonkondlo ngekusebentisa emagama latsite.
- Bhala sonkondlo lasetfulele kona kulenkondlo nemasu lawasebentisile.
- Indlela ingcikitsi lehambelana ngayo nemphilo yetfu yalalamuhla.
- Hluta ligalelo lekukhetfwa kwemagama, imifanekisomcondvo, (tinongo tenkhulumo tisho netaga )tinsita temsindvo letitsintsa ngayo umoyainshokutsi kanye nengcikitsi.

# Sehluko 6 Inoveli

## Kuhluta inoveli

### Singeniso/setfulo

Lapha setfulelwa indzawo kanye nesimo leyenteka kuso indzaba.

Setfulelwa umlingisi lomcoka nenkinga lacondzene nayo. Setfulelwa ngesimo, simo nasepolitiki nesimo.

Simo sendzawo-yindzawo lenjani, lesemakhaya, lesemadolobheni, letfutukile nobe lete intfutuko.

Simo senhlalo-lapha setfulelwa kutsi kuhleliswene njani, kanye nesimo setembusave.

Siphindze sitfole lwati ngesimo sesikhatsi; ngabe indzaba yenteka ngesikhatsi sakadzeni kusete imphucuko, nobe yenteka manje sekugcwele imphucuko, ngabe yenteke emini nobe ebusuku, ngabe yenteka ehlobo nobe ebusika konkhe loko kuchaza simo sesikhatsi.

Singeniso kumele sibe ngulesihhako kute setsamelilwati sitawuba nelilukuluku lekufundza.

### Ludweshu

Ludweshu kulapho lokwentekako sekucala kucangana. Balingisi bayaye bangaboni tintfo ngeliso linye; nobe umlingisi uyaye abe nemicondvo leminyenti lephikisanako netincumo lekufanele atitsatse. Loku kusinika tinhlobo letimbili teludweshu: Ludweshu lwangekhatsi nelwangehandle.

Ludweshu lwangehandle kulesikhatsi kunekungaboni ngalokufanako kubalingisi lababili nobe labangetulu kwalababili. Ludweshu lwangekhatsi kulapho umlingisi anemicabango leshayisanako ngekhatshi kwakhe uma kufanele ente tincumo letitsite.

### Sicakacaka

Sicakacaka sibonakala lapho indzaba seyiphakamela esicongweni. Tintfo tisuke seticangene kakhulu sekunesidzingo sesisombululo. Naletisombululo tisuke setitinyenti, setsamelilwati sesitibuta kutsi ngabe kuyawuphumelela siphi sisombululo senkinga.

### Luvutfondzaba

Kulesigaba lesi kuphendvuleka umbuto nobe imibuto lebesinayo esicakacakeni. Kuvela sisombululo. Indzaba isuke seyisecophelelweni lelisetulu seyimnandzi kakhulu.

### Siphetfo

Indzaba ayipheleli esicongweni kepha iyachubeka ifike esiphetfweni. Lokubalulekile kutsi timbadlwana tindlela tekubhala siphetfo. Siphetfo kufanele sisheshe sifike singeluli, asilandzele masinyane nje emva kwesicongo nobe luvutfondzaba.

Siphetfo lesikahle ngulesishiya umfundzi asale aticabangela lokwalandzelauma kusonjululwa inkinga nobe sivete loko umbhali langakakulindzeli. (ingwijikhwebu). Kufanele siphetfo singashiya umfundzi advumele nobeasangene nobe angenayo imibuto.

### Hlahlela indzima yembhali

Umfundzi kufanele ati kutsi umbhali uyachumana ngandlelatsite nalokulakubhalile. Lokuchumana kubonakalisa imiva nemibono yakhe kephakumatima kwenta loko.

Sikhona kubona imiva yembhalingenhlobo yemlandzi lamkhetsileekwetfuleni umsebenti wakhe. Umlandzi nguloyo lesiva ngaye lendzaba. Umbhali angakhetsa kuba ngumteki wenzaba lowati konkhe lokwentekako, nobe abe ngumlandzi longulokhulumako, nobe abe ngumlandzilongumabona nhlangothi tonkhe.

Ligama lelitsi umlandzi licuketse umbhali nobe lendlela umbhali lakhetsekungenisa ngayo umsebenti wakhe. Kutawuchazwa letinhlobo nebandzi kafishane

### **Umlandzi longusatikhonkhe**

Lomlandzi lona uyati kutsi umlingiswa ngamunye ucabangani futsi uvanjani, wati konkhe lokwentiwa ngumlingisi.

Lomlandzi wenta umfundzi akhone kwati ngabo bonkhe balingisi. Umsebenti wasatikhonkhe kwehlukana balingisi kute bangafanani.

### **Umlandzi locishe angusatikhonkhe**

Lapha umbhali usebentisa lomunye webalingiswa kutsi kube nguyelococa indzaba. Kuvamise kuba ngumlingiswa logcamile. Usitjela ngemiva yakhe nemicabango nemizindlo yalabanye balingiswa.

Sibona labanye balingiswa ngaleliso lalomlingiswa lona. Umfundzi uyayeamvele lomlingiswa lona. Alusetjentiswa kakhulu eSiswatini loluhlobolwemlandzi.

### **Umlandzi longumuntfu wekucala-lokhulumako**

Umteki ungulomunye webalingiswa, ucoca yonkhe lendzaba. Indzabaigcwele tivumelwano leticondziswe kuye bo “Ngi” “mine” “si” “tsine” Lendlela lena iletsa simo sekutsintsana ngco nesimo salokwenteka endzabeni.

### **Umteki longumabonahlangotsi tonkhe**

Lapha indzaba icocwa ngekuvele wetfule tehlakalo umbhali angangenikubalingiswa futsi angasebentisi umlingiswa loyedvwa. Cishe yindlelalelukhuni ledzinga buchwepheshe.

### **Umbiki**

Lomlandzi lona akateki uyabika; akanalo likhono lekubona nhlangothsonkhe. Umfundzi uyeva kutsi kukhona umuntfu lonitjela lokwentekako. Iyadvumatana lendlela lena yekubika ngoba lomlandzi akanikiumfundzi lifuba lekuticabangela, ubese uyangena afake imifako nalapho kungadzingeki khona.

### **Simonhlalo nesimo setepolitiki ematheksthini**

Umfundzi kufanele akhone kuchaza kutsi kuhlaliswene njani emimangweni letfolakala ematheksthini. Simo setembusave nobe ipolitikisiyahambelana yini naleso lesenteka emimangweni yetfu. Ngabe kuyaliwa, kubangwa tikhundla, kuyabandlululwana, kuyavotwa njalo njalo, kukhetfwa mengameli nobe kuyakhankhaswa.

### **Hlola tincumo tembhali netiphetfo aticatsanise netakhe**

Umfundzi kufanele akwati kuhlola kutsi umbhali uyephetse ngendlelalefanele yini inoveli yakhe ngekulandzela timiso tetiphetfo letemukelekile. Umfundzi ubeseubeka umbono wakhe kutsi kube yena bekangumbhalibekangayiphetsa njani lenoveli asekele iphendvulo yakhe.

### **Hlola sendlalelolwati nesimonhlalo sibekandzaba nendlela lesingatsintsana ngayo nemlingisi nobe ingcikitsi**

Sendlalelolwati siyahambisana nengcikitsi kanye nemlingisi.

Ingcikitsi ngumgogodla wenzaba, nguloko umbhali lafuna kubhala ngako, njengekutsi bantfu bakulenzawo layikhetsile baphila njani kuleso simolafuna kukhuluma ngaso.

Esikhatsini lesinyenti indzawo lesikhulela kuyo iba nabo budlelwano naloko umbhali lafuna kubhala ngako. Similo semlingisi, netento takhetiba ngumphumela wenzawo lakhulela kuyo nesikhatsi lakhula kuso.

Ngulobo budlelwano lobukhona emkhatsini wemlingisi nesendlalelolwati. Tintfo lotawukhuluma ngato umbhali kufanele tihambelane nesikhatsi, kungabi yintfo leyenteka kadzeni kepha umbhali abe asebentisa tintfoletikhona kulesikhatsi salamuhla.

### **Umfundzi kufanele anike tiphakamiso takhe ematheksthini**

Umfundzi utawunika wakhe umbono ngesitatimende lesitsite lesitfolakala enovelini bese seyawusekela lombono wakhe. Kulesinye sikhatsi utawucelwa kutsi aphawule kutsi sitatimende lesitsite ngabe singumbononobe singemaciniso esekele lesiphakamiso sakhe.

### **Humusha simo semoya, sikhatsi kanye nengwijikwebu etiphetfweni**

Umfundzi kufanele akhone kuwubona umoya lokhona enovelini, ngabengumoya wenjabulo, welusizi, wekukhutsata, nobe wemphumelelo.

Sikhatsi kumele sichubekele phambili sitfutfuke singemi ndzawonye. Njengoba kwenteka emphilweni siyachubekela yini kuleliye lihora, lusuku, liviki, inyanga, sikhatsi semnyaka njalo njalo. Ngabe lokwentekakokuyahambelana yini netigameko, ukhona yini umehluko uma ucatsanisanesikhatsi salomuhla.

Umfundzi kumele akhone kuhlola kubhaleka kahle kwetiphetfo, ikakhululeto letiyingwijikwebu nobe leto letikushiya nembuto, hhayi leto letiveletikwente ubete longakubuta, indzaba iyaphela nje khona lapho.

### **Hlola umehluko emkhatsini wenshokutsi lesebaleni lebhacile**

KuTemibhalo kuvamile kutsi kube nenshokutsi lebhacile nalesebaleni. Umfundzi unikwa inshokutsi lesebaleni kufuna atfole leyo lebhacile. Lokukuvame uma kusetjentiswa tinongo tenkhulumo njengesifaniso, sifanisongco, imifanekisomcondvo netigamekotiphukuto nalapho emagama emlingisi asho imicondvo lemibili kepha umlingisi yena abeangawati lolomunye umcondvo, ubonwa ngolowo lofundzako kuphela.

### **Emasu ekuveta balingisi**

Balingisi babaluleke kakhulu enovelini ngoba ngibo labenta sikhonekutfola ingcikitsi, tifundvo kanye nemilayeto lafuna kuyendlulisa kitsiumbhali. Ngibo labenta ingcikitsi ivele ebaleni ngetento tabo.

Manyenti emasu lasetjentiswako kepha kumele ente balingisi labakho-lwekako. Labakwentako, abakushoko akuhambisane nendzawo labaphilakuyo kanye nesikhatsi labaphila kuso.

### **Umbhali angasitjela yena kutsi umlingisi ungumuntfu lonjani**

Umbhali angasebentisa lendlela yekusitjela ngesimilo semlingisi, angamniki umfundzi litfuba lekucagela. Uvele atsi Mphikeleli walunga, kungadzingi kutsi ente intfo letsite Mphikeleli lesikhombisa kutsi lungile. Lena akusiyo indlela lencomekako ngoba phela ifunta umfundzingelwati.

### **Bangavetwa ngetento tabo**

Lendlela lena ikahle ngoba tintfo labatentako labalingisi nguleto letentiwabantfu labaphilako. Umfundzi uyawati emagugu emmango naleto tintfoummango longativumeli kutsi tenteke. Ngalolu lwati siyakhona kuhluta kutsi umlingisi ungumuntfu lonjani ngekubuka tento takhe kutsitinguletemukelekako nobe atemukeleki.

### **Tembatfo tabo**

Timpahla lesitigcokako tikhuluma lokunyenti ngemphilo yetfu. Yonkheindlela yekugcoka iyaye imataniswe neluhlobo lolutsite lwebantfu nobeindlela yekutiphatsa nobe yokuphila. Ngekubuka timpahla, uyakhonakubona kutsi umuntfu unemali, uphuyile, ulandzela nkholo yini, usebentaini, uzitsile, ukusiphi sigaba sekukhula. Umbhali uyatisebentisa timpahlakusivetela balingisi.

### **Kubetsa emabito**

Emabito etfu anemvelaphi letsite futsi kuvamisile kutsi umuntfualilandzele libito lakhe uma sekakhulile. Kungako batali kufanele bacaphele uma betsa bantfwana emabito. Leli lisu umbhali langalisebentisa kuveta balingisi.

### **Indlela labadlala ngayo**

Badlali bangavetwa ngetikhundla labatidlalako kanje: \_ Bangiswako – nguloyo lobangiswa lokutsite enovelini.

- Imbangi
  - nguloyo lobangisa bangiswako
- Umkhweteli
  - nguloyo logcugcutela incabano
- Umlamuli
  - nguloyo loletsa kuthula emkhatsini wembangi nabangiswako.
- Mphacambili
  - nguloyo lotfolakala angumngani wembangi aphindzeabe ngumngani wabangiswako, kahle kahle akatati kutsi umephi. Kulesinye sikhatsi uyatati kutsi umephi kepha usuke ayekuva sifubasabangiswako kute ayewukwatisa imbangi, kuye ngekutsi ngumuphilamtsandza kakhulu.

### **Indlela labadlala ngayo**

Balingisi abafani njengoba bantfu bangafani emphilweni. Kunebantfulabangantjintji indlela labacabanga ngayo, kusukela ekucaleni kwemphiloyabo kute kube sekugcineni, bese kuba khona labo labahambe baguculeimicondvo yabo ngoba sebafundze lokutsite emphilweni. Siba netinhloboletimbili tebalingisii.

Losicaba ngumdlali longagucuki

Loyindilinga – ngulogucukako.

### **Labakushoko labanye ngawe**

Uma ufuna kwati kabanti ngemuntfu uyaye ubute labo labahlala naye. Kanjalo nembhali uyaye atsatse labalingisi labanye abafunte inkhulumiswano bavete lokutsite ngeblingisi ngoba baphila naye.

Lokubalulekile uma ufundza inoveli.

- Hlola kubumbana kwesihloko nengcikitsi.
- Hlola sendlalelolwati nesimonhlalo (sibekandzaba) lesingahambelana ngaso nemlingisi nobe nengcikitsi.
- Sendlalelolwati singakufaka enkingeni. (Bangani bakho nebantfu lohlala nabo emmangweni bakwentaube nguloku longiko. (Bangani bothishela bafundzisi, batali.)
- Humusha simo semoya, sikhatsi ingwijikhwebu netiphetfo.
- Umoya ungabaweludlame, wekukholwa, wekuhlukubeta.
- Sikhatsi Sikhatsi emdlalweni siyatfufuka. Umgamu wesibili, Inyanga yenNgci
- Fundza ngesakhiwo. Sibekandzaba (sikhatsi, indzawo, simo senhlalo (tepolitiki) Ludvweshu, luvutfondzaba, lupholavutfondzaba, lubohlo siphetfo (ingwijikhwebu) Sisombululo bese siba sinye.
- Umlayeto nesecewayiso
- Sifundvo

# Sehluko 8 Temdzabu

## Temdzabu

- Tinhlobo tetinganekwane
- Tinganeko

Inganeko itsintsa inkholo kanye naNkhulunkulu noma Mvelinchanti. Inganeko isitjela imvelaphi yebantfu netintfo letitsite. Balingisi kubabantfunetilwane.

## Tinsumansumane

Luhlobo lwenganekwane loludze kunaletinye. Balingisi bantfu labake baphila emazimu ladla bantfu netilwane letikhulumako letitiphatsa njengebantfu.

## Ematekelo

Luhlobo lwenganekwane lolusamlandvo ngoba lugcila emlandvweni webantfu, tintsintse netigameko letake tavelela bantfu kuleso sive, tiba nekungakholweki ngoba sitfoa tilwane letikhulumako. Kulesinye sikhatsi kuyaye kukhulunywe ngebuchawe bemakhosi netintfo lebetentiwa tive letitsite.

## Tinsumo

Tinganekwane letikhuluma ngetilwane kuphela, ayitsintsi bantfu. Imfishane kakhulu. Tilandzisa kutsi kwaya ngani lesa silwane sibe njengoba sinjalo.

## Tinganekotilwane

Tikhuluma ngetilwane. Letilwane titiphatsisa kwebantfu, tiyakhuluma, tente tintfo letentiwa bantfu. Tisilandzisa ngemvelaphi yetici letitsite etilwaneni noma umkhuba lotsite letiwentako.

Tifundzelwani tinganekwane

- Kufundzisa
- Kutfutukisla lulwimi ngoba nasicoca sisebentisa lwimi.
- kwenta umcondvo wakhe ukhona kukhumbula, nekutsi akhona kucocela labanye
- Kujabulisa bantfwana

## Sakhiwo senganekwane

### Setfulo

Setfulo kumele sibe sifishane, sicoceke, sihehe sinembe. Loyitekako akangatsemeleti.

Balingisi

Baba mbalwa,

Kungaba bantfu nobe tilwane

### Sikhatsi nendzawo

Akwatiwe kutsi yenteka kuyiphi indzawo (edolobheni emakhaya, ehlanzeni, enkhanga njll), ngasiphi sikhatsi (ekuseni, emini, entsambama) ngasiphi sikhatsi semnyaka (ebusika ehlobo njll)

### Ludweshu

Nasikhuluma ngeludweshu sisho kushayisana kwemibono, imicabango netento tebantfu. Uma kushayisana ngusemkhatsini webantfu lababili sitsi ludweshu lwangaphandle, uma kusemicabangweni yemuntfu sitsi ludweshu lwangekhatsi. Lubalulekile ludweshu ngoba lwenta inganekwane itfutfuke iye phambili.



### **Sicakacaka**

Loludvveshu loluchazwe lapha ngenhla ngilo lolubanga kutsi kube nesicakacaka. Lokungashayisani kwemibono kwenta kutsi kubente umlingisi logobako ehlise umoya, nguloyo uba nelisu lakhe lekusombulula inkinga. Kute lotifobako avume kutsi lowakakhe umbono, tento ngito letikabi letibanga kungevani.

### **Luvutfondzaba**

Sicongo sendzaba lesi. Inkinga lesengane kwaneni isuke seyisetulu seyidzinga sisombululo. Kuvela kutsi ngubani lophumelelako nalohlulwako.

### **Lupholavutfondzaba**

Tinkinga tisque seticatululiwe. Imibuto lebesinayo ngekutsi kutakwentekani isuke seyinetimphendvulo. Sekute lwati lolusha lesiludzingako.

### **Siphetfo**

Silindzeleke kutsi sibe sifishane, sicoceke. Kuvela lokunyenti nge mlingisi.

Inganekwane singabuye siyihlute ngaphasi kwanati tihloko letilandzelako:

### **Insweleko**

Yintfo leswelekako, ledzingekako.

### **Likhambi lensweleko**

Kulapho sekutfolakala lobekuswelakele

### **Umyalo**

Kuba nemyalo labanikwa wona njengendlela yekuphila kuleyo ndzawokutsi bente nobe bangenti lokutsite.

### **Kwep hulwa kwemyalo**

Kuvamile kutsi umyalo ulandzelwe nobe ungalandzelwa. Uma kunalabangalandzeli umyalo, loko sitsi kwep huka kwemyalo.

### **Sijeziso**

Sonkhe siyati kutsi uma umuntfu ephula umyalo kumele ajeziswe ngandlela tsite. Loko labakwentako uma ephule umyalo kutsiwa sijeziso.

### **Imibuto longayilindzela**

1. Yini Tingane kwane?
2. Nika tihlobo tetingane kwane, uchaze ngalunye ngalunye luhlobo.
3. Nika tizatfu tekutsi bantfwana bacocelwe ingane kwane
4. Hluta tingane kwane lotifundza lonyaka ngaphasi kwaletihlokwana
  - a. Sikhatsi nendzawo
  - b. Ludvveshu
  - c. Sicakacaka
  - d. Luvutfondzaba
  - e. Lupholavutfondzaba
  - f. Siphetfo.
5. Khipha loku lokulandzelako engane kwaneni leniyifundzako lonyaka:
  - a. Insweleko
  - b. Likhambi lensweleko
  - c. Umyalo
  - d. Kwep hulwa kwemyalo
  - e. sijeziso

f. sifundvo

### **Tiphicaphicwano**

Luhlobo lwemdlalo lolungadlalwa ngulabancane nalabadzala

Tibaluleke ngani tiphicaphicwano  
Tenta emalunga emndeni abumbane  
Tifundzisa kutiphatsa kahle

Tibonelo

- Ngikuphica ngenkhomo yami lebovu lehlala esibayeni lesimhlophe.
- Ngikuphica ngemfati wami lotsi angagidza agidza bese uhlala emsamo.
- Ngikuphica ngemuntfu wami lomkhulu lohamba abhodla.

### **Tisho**

Atisiyo imisho lephelele  
Tigucuka netikhatsi tesento  
Imicondvo yato ilula kunaleyo yetaga  
Tifaka yonkhe incenye yemphilo yemuntfu.  
Atigucuki tisetjentiswa tinjalo

Tibonelo

- Kubamba longentasi (kumangala)
- Kubangwa netibi (kugula kakhulu)
- Kubuka ngewayitolo (Kungalali)

### **Taga**

Taga ngemavi lakhombisa buciko bekusho intfo letsite ngemavi lashubile, lakhombisa kuhlakanipha. Alulwimi lolunotsile lolusho umcondvo lophelele ngemavi lambalwa.

### **Tibaluleke ngani taga?**

- Tikhomba kutfutfuka kwelulwimi
- tikhomba kunotsa kwelulwimi.
- Tisebentisa imisho lemifishane lefinciwe.

Tibonelo

- Ingwe idla ngemabala. Umuntfu utenta yena ngemisebenti yakhe lemhle kutsi atsandzeke.
- Intsandzane lenhle ngumakhotfwa ngunina. Umntfwana uphila kahle uma kusenenina.
- Umtsentse uhlabisa usamila. Umuntfu ubonakala asemncane kutsi utawukhula abe nesimilo lesinjani.

### **Tilandzelo**

Tinkondlo tebantfwana lesebakhulakhulile  
Tivame kuhlatjelelwa enkulisa nobe emabangeni laphasi.

### **Imilolotelo**

Luhlobo lwetinkondlo lolubhalelwe bantfwana ngenhloso yekubalolotela nobe kubathulisa kutsi bangakhali.

Kubaluleka kwemilolotelo  
Kuthulisa bantfwana.  
Kugcugcutela umntfwana lofundza kuma.  
Kumnika sibindzi sekutsi akhone kutihambela.

**Tinanatelo**

Tiyini futsi tibaluleke ngani?

Ngemagama lasetjentiswa nakubongwa umuntfu lotsite, tingemagama ebantfu  
Kucala lesibongo bese kulandzela letinanatelo, akuvami kutsi kube ligama linye, kuvame  
kutsi abe manyentana, avete umlandvo nebuchawe.

Tiveta umlandvo ngemvelaphi yemuntfu

Tidzambisa kutfukusela kumuntfu lobongwako

Tikhomba kutsi loyo lokhulumako uyasati sibongo sakini

**Tibongelelo**

Tingemagama lakhomba buchawe bemuntfu

Kungabongwa umuntfu, imoto, tilwane, emakhosi, tindlovukati netimfuyo letinjengetinkhomo

Ticanjwa bantfu batusela kulodvume ngako

Tinkhomba kujabulelana

Tikhomba buchawe bembongi.

**Tibongo**

Tigcamisa umlandvo wesive

Tihaywa yimbongi ngembikwekutsi inkhosi lkhulume uma kunemcimbi

**Tibonelo**

Khumalo

Mtungwa

Kuhlase

Siwela.

Singwane

Gwazela

Mshika

Hlaba letindvuna ushiye ematfokati khona atewutalelana.

# Sehluko 8 Imidlalo

## Sakhiwo semdlalo

### Setfulo

Esetfulweni sitfola sibekandzaba. Ngaphasi kwesibekandzaba sitfola umdlali lomcoka, nenkinga labukene nayo. Siphindze sibuke simo sendzawo. Sinaka ligama lendzawo, kungaba kusemakhaya nobe emadolobheni.

Siphindze sibukenesimonhlalo sitfola kutsi labantfu bahlalisene njani, bantfu ngabe bayevana nobe bayacabana. Kuphindze kubukwe simo setepolitiki. Ngabe kutembusave kunekuthula nobe kunekungevani. Kuphindze kubukwe simo sesikhatsi. Ngabe lendzaba yenteka emandvulo kusete imphucuko nobe yenteka lomuhla sekunemphucuko, ngabe yenteka emini nobe ebusuku, ngabe yenteka ehlobo nobe ebusika. Konkhe loku kuchaza simo sesikhatsi. Singeniso nobe setfulo kufanele kube ngulesihhako lesenta umfundzi abe nelilukuluku lekufundza. Umbhali usuke ehlulekile uma umfundzi angabi nalo lilukuluku lekufuna kufundza incwadzi.

### Ludvweshu

Ludvweshu kulapho sekucala kucabana. Balingisi bayaye bangaboni tintfo ngeliso linye. Nobe umlingisi uyaye abe nemicondvo leminyenti netincumo lekufanele atitsatse. Loku kusinika tihlobo letimbili teudvweshu. Ludvweshu lwangekhatsi nelwangephandle. Ludvweshu lwangephandle kulesikhatsi kunekungaboni ngalokufanako kubalingisi lababili nobe labangetulu kwalababili. Ludvweshu lwangekhatsi kulapho umlingisi anemicabango leshayisanako.

### Sicakacaka

Sicakacaka senteka lapho indzaba seyiphakamela esicongweni. Tintfo tisuke seticangene kakhulu sekunesidzingo sesisombululo. Naletisombululo tisuke setitinyenti, setsamelilwati sesibuta kutsi ngabe kuyawuphumelela siphi sisombululo senkinga. Kuba netingucuko letitsite etimphilweni tebadlali.

### Luvutfondzaba

Kulesigaba lesi kuphendvuleka umbuto nobe imibuto lebesinayo esicakacakeni. Indzaba isuke seyisecophelelweni lelisetulu seyimnandzi kakhulu..

### Imbangalusizi

Lona ngumdlalo lokhombisa kushuba kwengcikitsi lokukhulunywangayo, iletsa lusizi netinyembeti. Kukhalelwa umlingisi logcamilengoba usuke ehlulwe tinkinga labekabukene nato agcine eve buhlungu lobukhulu, kulahlekelwa kabuhlungu nobe kufa. Lomuntfu lofako nobe lovelelwa ngulethlakalo letilukhuni akukameli afeleintfo lengakemukeleki emmangweni, njengebugebengu. Kufunasimvele khona kutewudaleka lusizi. Lokuhlupheka kwakhe kufunakubangwe kucinisa inhloko kwakhe nobe kutikhukhumeta.

### Imelodrama

Icisha ifane nembangalusizi. Kunelusizi nemunyu nekwesaba. Tibukeli tesabela imphilo yabangiswako. Lolusizi lusuke lungakabalulekikusuke kube nekuhabisa lokutsite kepha tintfo tigcina setimhambelakahle bangiswako.

### Senamisi

Kulenhlobo yemdlalo tintfo timhambela kahle bangiswako. Nobekungaba netibumatima lobutsite umdlalo usachubeka kodwa kubanesiphetfo lesihle. Lomdlalo wenta tibukeli tijabule nobe tename.

### **Umdlaloncoko**

Lomdlalo ugcewele kuhlekisana nemanconcoko. Uvame kungabi nesakhiwo lesihleleke kahle kusukela esetfulweni kuya esicongweni. Lokubalulekile kutsi konkhe lokwentiwa badlali kube nekuhabisa lokuletsa kuhleka.

### **Umdlalo wemoya**

Umdlalo wemoya ngumdlalo lolalelwako kute lufu lolubonwangemehlo. Loku kwenta kutsi kungabi nemincele nobe tihibelebetingakhinyabeta umdlalo wasesiteji. Kulenhlobo yemdlalo tingafakwa timoti, tindiza, tilwandle, netinkhomo. Bayakhona bahlelikufaka imisindvo lesitsi uma siyiva sikholwe kutsi kukhona lokulokumelelwe ngulomsindvo. Inkhundla yalomdlalo ingaba nobekukuphi njengasemkhatsini, emhlabeni, etitibeni naselwandle. Kuteumlaleli awutfokotele lomdlalo ingcondvo yakhe kufuna isebentekakhulu kuhumusha imisindvo iphindze ikhone kutakhela imifanekisomcondvo. Umlingisi ngamunye kakhulu lona lomcokakufanele abe nendlela yakhe lehlukile lakhuluma ngayo nobe lentangayo tintfo. Badlali kumele bangabi banyenti, kepha awukagcogceki ngeliphuzulesikhatsi. Kubalulekile kutsi sakhiwo silongeke kahle, nguleso naleso sicephu kufanele sipele esicongweni kute umlaleli atewudvonseka kutsi alalele nakusasa kute atfole kutsi kwase kwentekani.

### **Umdlalofilimu**

Umdlalo filimu siyalalela siphindze sibone konkhe lokwentekako. Kubaluleke kakhulu loku lokwentekako kunaloko lokukhulunywakokangangobe ungakhona kuvisisa kutsi umdlalo ungani ngaphandlekwekuva kutsi badlali batsini.

### **Umdlalo lofundvwako**

Lomdlalo ubhalelwe kufundvwa kuphela ngoba lokwentekako kuwokongete kwakhombiseka esiteji. Tintfo letisetjentiswe kuwo tikhombakutsi lomdlalo ungete wadlalwa esiteji nobe enkhundleni, ulungelekufundvwa kuphela.

### **Umdlalo lonkhundlanye**

Umdlalo lonkhundlanye ugcocekile ugicile esigamekweni sinye, kungako unenkhundla yinye nengcikitsi yinye. Badlali bambalwokusukela kulababili kuya kulabasihlanu. Ingcikitsi iba yinye futsikumele ihambelane nesimo sendzaba. Sikhatsi sigcogceke kakhulu, konkhe lokwentekako kwenteka elangeni linye.

### **Kufundza umdlalo**

Luhlobo lwemdlalo: Senamisi, imbanganalusizi, senamisi

Umlayeto lokhona emdlalweni (Sifundvo lositfolako ungafundza)

Ingcikitsi. Hlola nefundzi kutsi lengcikitsi ivele njani.

Kudlaleka esiteji, kumabonakudze

Kutusa kubhaleka kwemdlalo-Hlahlela umnyakato nenkhulumiswano. Ukhona yini umnyakato kulenkhulumiswano.

Fundza ngebudlelwano emkhatsini wemlingisi nendzikimba. Umlingisi uwutfufukisa kanganani umdlalo. Sibonelo umlingisi lotsite angalubhebhethsekisa ludvweshu.

Fundza ngeSakhiwo Sakhiwana. Lapha sibuka setfulo, ludvweshu, sicakacaka, luvutfondzaba, lupholavutfondzaba nesiphetho. Nihlola kutsi uphumelele yini umbhali kuveta letincenye tesakhiwo kulomdlalo. (Kuleso naleso sigcawu hlola sakhiwo.

### **Setfulo**

Esetfulweni sibukak simonhlalo, simo sesikhatsi

Inkinga lesibukene nayo

Umlingisi losemcoka

### **Ludvweshu**

Tigameko

Tinhlobo teludvweshu nekutsi lubhebhethseka njani

**Sicakacaka**

Lapha kusuke sekunemasu lamanyentu lahlukahlukene lasisombululo senkinga lekhona. Kusuke sekuhlangahlangene, umfundzi sekatibuta kutsi nguliphi licebo lelitawuphumelela.

**Luvutfondzaba**

Kusesicongweni semdlalo lapho inkinga icatululeka khona, lapho kuphendvuleka khona imibuto leminyenti umfundzi labesolo atibuta yona.

**Siphetfo**

Lapho kusongwa khona. Siphetho kumele sibe yingwijikhwebu nobe sishiye umfundzi anembuto kutsi ngabe kwaphetsa njani.

Kumele kuhlolwe kutsi sakhiwana (*sub plot*) siyahambelana ybni nesakhiwo lesikhulu.

**Umbuto: Humusha ubuye uhlole sakhiwo semdlalo**

8. Kuvetwa kwebalingisi

Balingisi bangavetwa ngetento tabo, kugcoka kwabo, kukhuluma, kunjalo, labakushoko labanye ngabo, umbhali uyasitjela kutsi ungumuntfu lonjani nobe ametse libito lelihambisana nebunjalo babo.

Singahlola futsi nendlela balingisi labatfufukisa ngayo umdlalo.

Singahlola futsi kunjalo babo

Usicaba, uyindilinga,

9. Kudlaleka esiteji. Tigcawu, tinkhundla. Inkhundla nobe sigcawu sinato nobe site tintfo letingavimba kudlaleka kwato esiteji.

10. Inhloso yesigameko lesitsite. Sentekelani sigameko lesitsite kuleso sigcawu.

### Irubhrikhi ekuhlola indzaba

1. Tiphumuti/Timphawu Tekubhala	(3)	1. Kuticambela	(10)
2. Lulwimi lolunongiwe: Tisho, taga, tinongo	(5)	3. Imibono lehambisana nesihloko	(5)
3. Kwakheka kwemisho levakalakako	(5)	4. Khuhleleka (bufakazi bekuhlela)	(5)
4. Umoya/irejista	(3)	5. Kwemukeleka	(10)
5. Sipelingi	(3)		
6. Budze	(1)		

### Irubhrikhi yekuhlola imibhalombiko

1. Tiphumuti/Timphawu Tekubhala		1. Kuticambela	
2. Lulwimi lolunongiwe: Tisho, taga, tinongo		3. Imibono lehambisana nesihloko	
3. Kwakheka kwemisho levakalakako		4. Khuhleleka (bufakazi bekuhlela)	
4. Umoya/irejista		5. Kwemukeleka	
5. Sipelingi			
6. Budze			

Tincwadzi letifundziwe

1Mntungwa N. (2009) Grade 12 Siswati Study Guide, Nasou via Afrika: Cape Town

2 Mabaso NP (1994) Kuphuma kwelilanga Siswati Poetry Juta and Co Ltd Wetton

3 [Http://rogerebert.suntimes.com/app/bbcs.dl/article?AID=20060427/REVIEWS/60421](http://rogerebert.suntimes.com/app/bbcs.dl/article?AID=20060427/REVIEWS/60421) accessed on 8 November 2011.

4Umlalati unpublished document