

SA's Leading Past Year

Exam Paper Portal



You have Downloaded, yet Another Great  
Resource to assist you with your Studies 😊

Thank You for Supporting SA Exam Papers

Your Leading Past Year Exam Paper Resource Portal

Visit us @ [www.saexampapers.co.za](http://www.saexampapers.co.za)



**SA EXAM  
PAPERS**



# basic education

Department:  
Basic Education  
**REPUBLIC OF SOUTH AFRICA**

## **NATIONAL SENIOR CERTIFICATE**

**GRADE 12**

**ENGINEERING GRAPHICS AND DESIGN P2**

**NOVEMBER 2012**

**MEMORANDUM**

**MARKS: 100**

**This memorandum consists of 7 pages.**

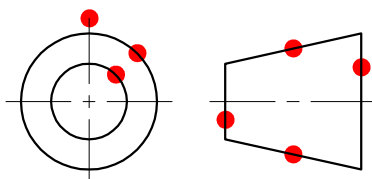
## ANSWERS

1	J BURGER	$\frac{1}{2}$
2	mm	$\frac{1}{2}$
3	2012-07-18	$\frac{1}{2}$
4	S GOBA	$\frac{1}{2}$
5	CAD	$\frac{1}{2}$
6	382	$\frac{1}{2}$
7	4	1
8	0,03	1
9	GRINDING	1
10	105°/75°	1
11	44°	1
12	6	1
13	COUNTER-BORE	1
14	FRONT VIEW	1
15	R6	1
16	A. $19 \pm 0,05$ B. 22    C. $\varnothing 30$ D. 60    E. 24	5
17	253	3
18	19,05	2
19	187,35 (UPPER) & 186,55 (LOWER)	4
20		4

TOTAL: 30

### ANSWER 20

● FREEHAND

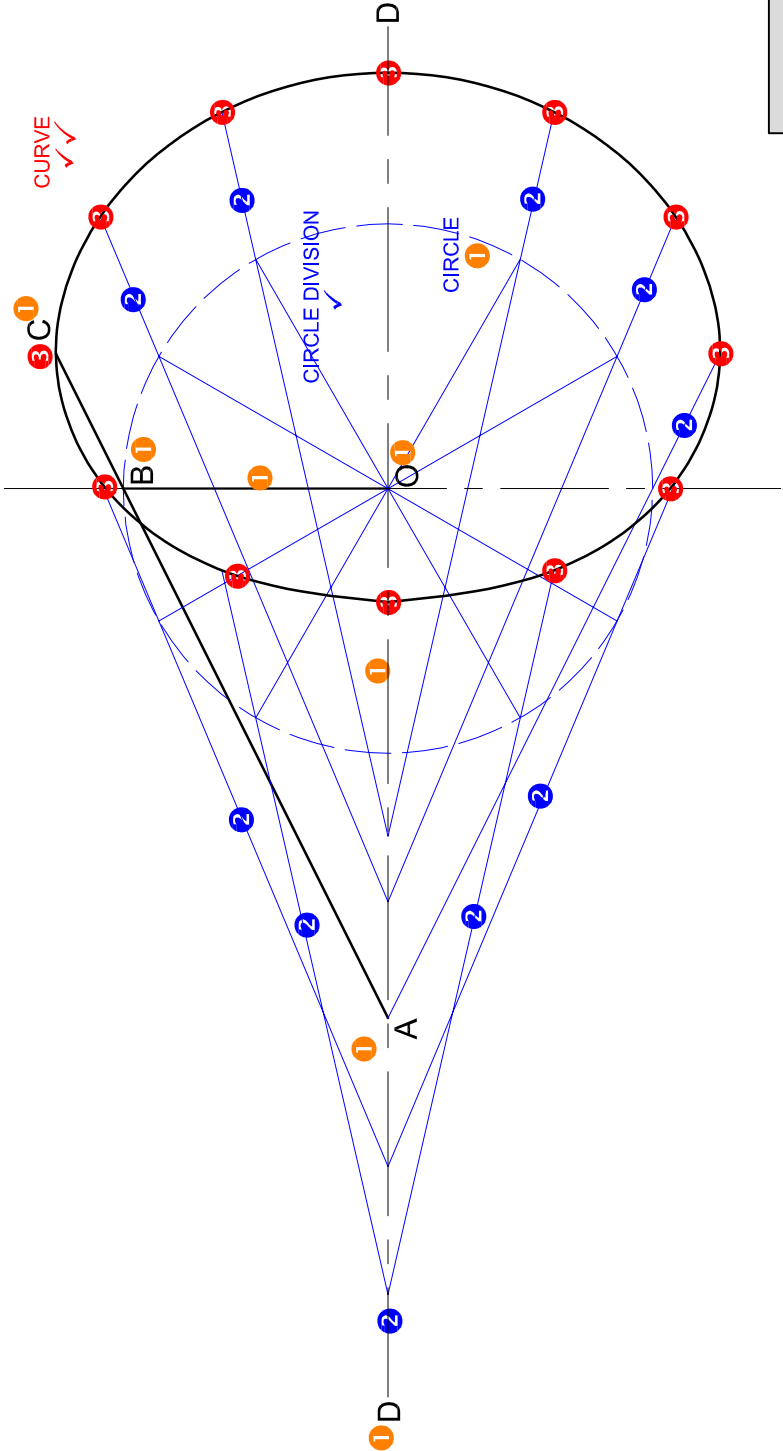


SYMBOL

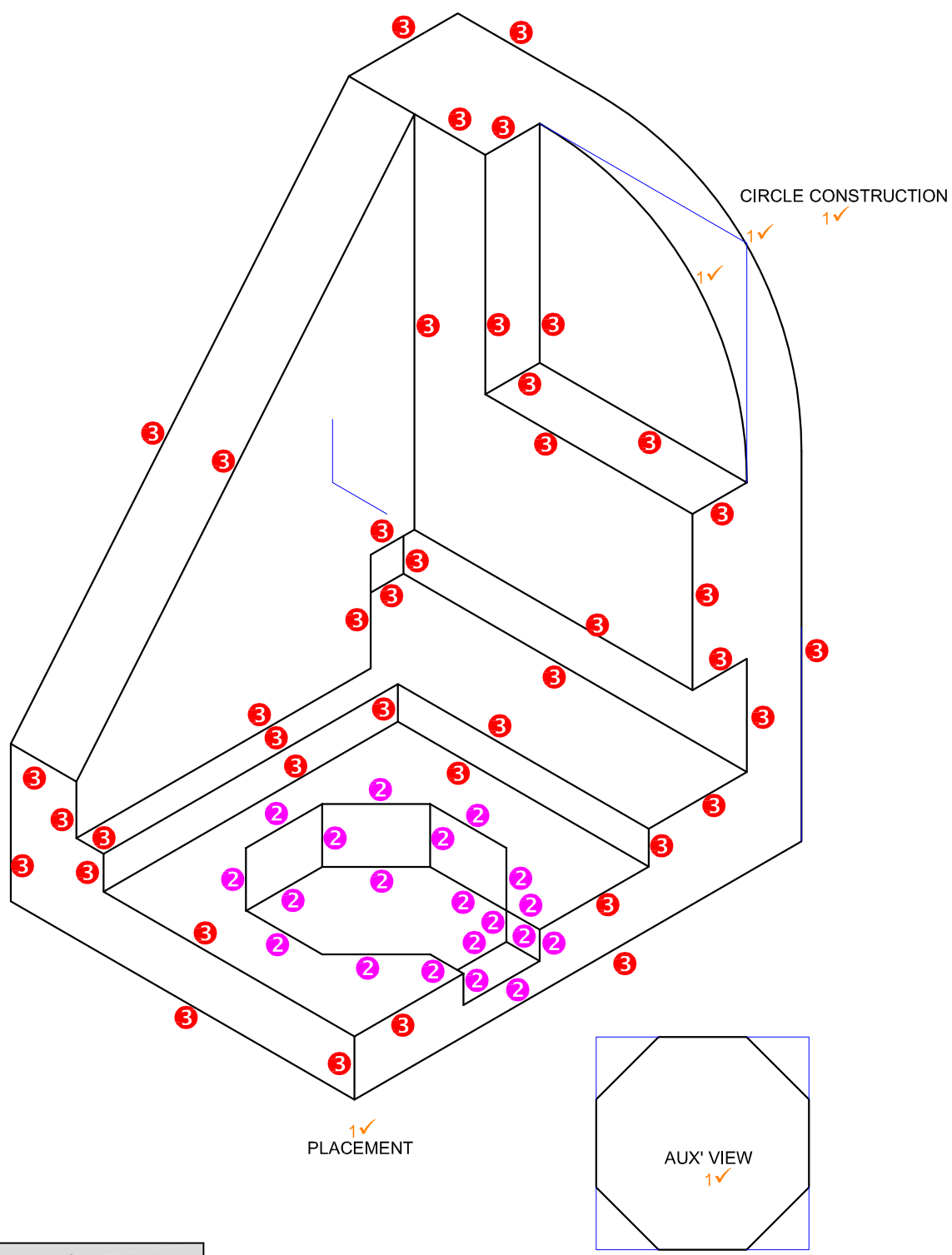
PAPER 2 QUESTION 1  
GRADE 12  
NOVEMBER 2012  
MEMORANDUM



PAPER 2 QUESTION 2.1  
GRADE 12  
NOVEMBER 2012  
MEMORANDUM



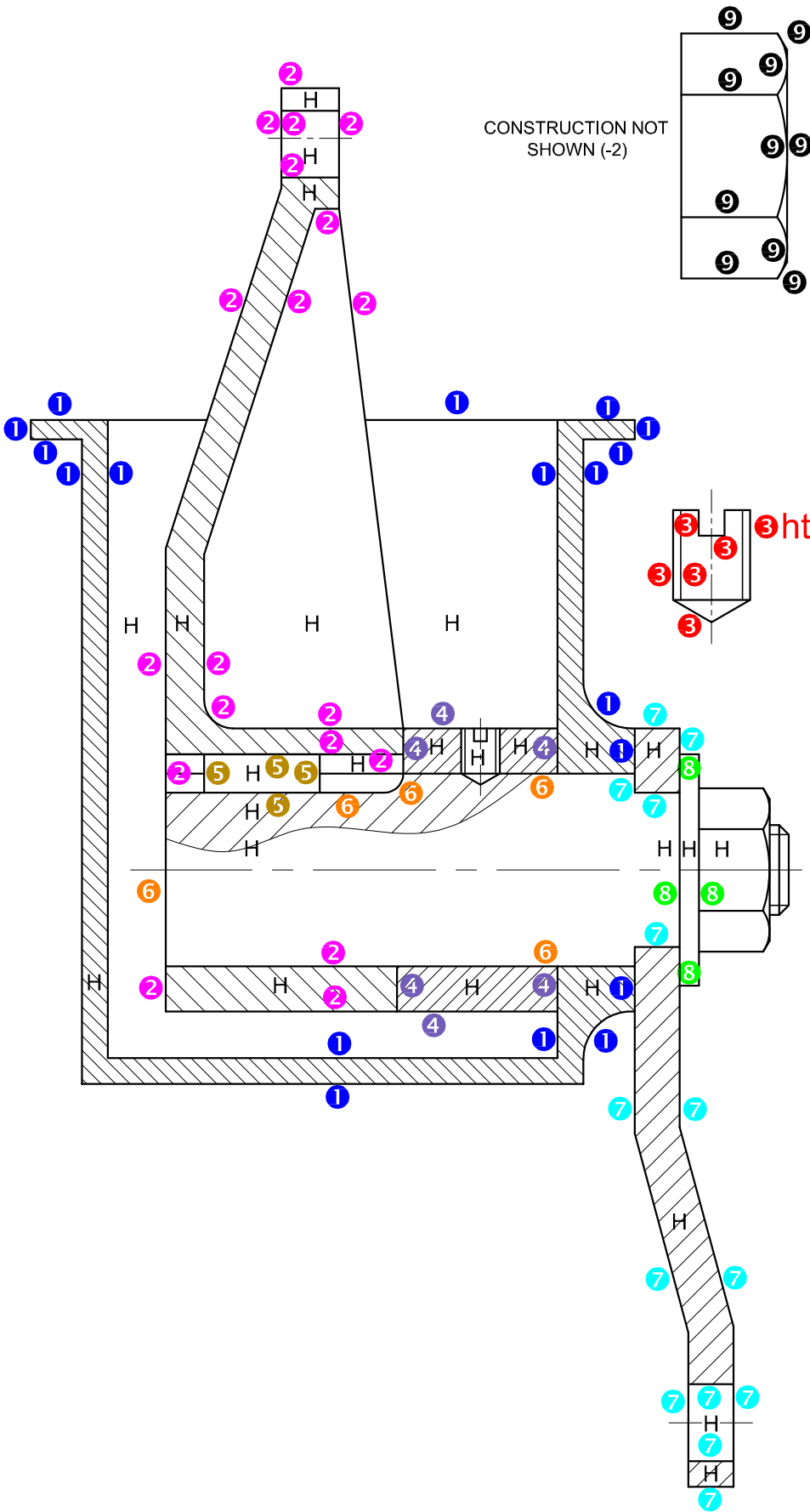
ASSESSMENT CRITERIA		
1	GIVEN	4
2	CONSTRUCTION	6
3	LOCUS + CURVE	8
SUBTOTAL		18
TOTAL		42



ASSESSMENT CRITERIA		
1	AUX' VIEWS + CIRCLE + CONSTR' + PLACE	5
2	OCTAGONAL HOLE	10
3	ISO' + NON-ISO' LINES	21
TOTAL		36

SECTIONAL FRONT VIEW

1	HOUSING	9
2	RELEASE ARM	9½
3	GRUB SCREW	3
4	SPACER	3
5	KEY	2
6	SHAFT	6½
7	LEVER	7
8	WASHER	2
9	M14 NUT	5
H	HATCHING	13
SUBTOTAL		60

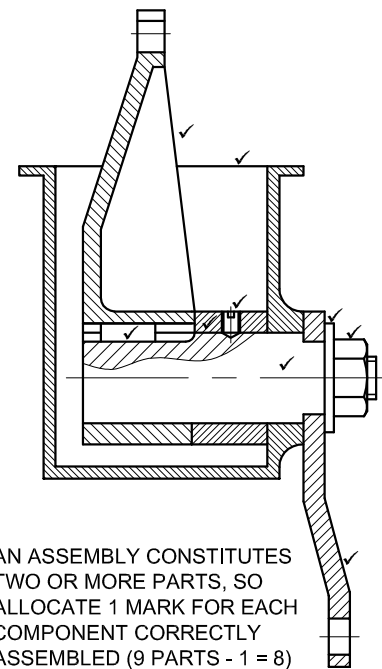
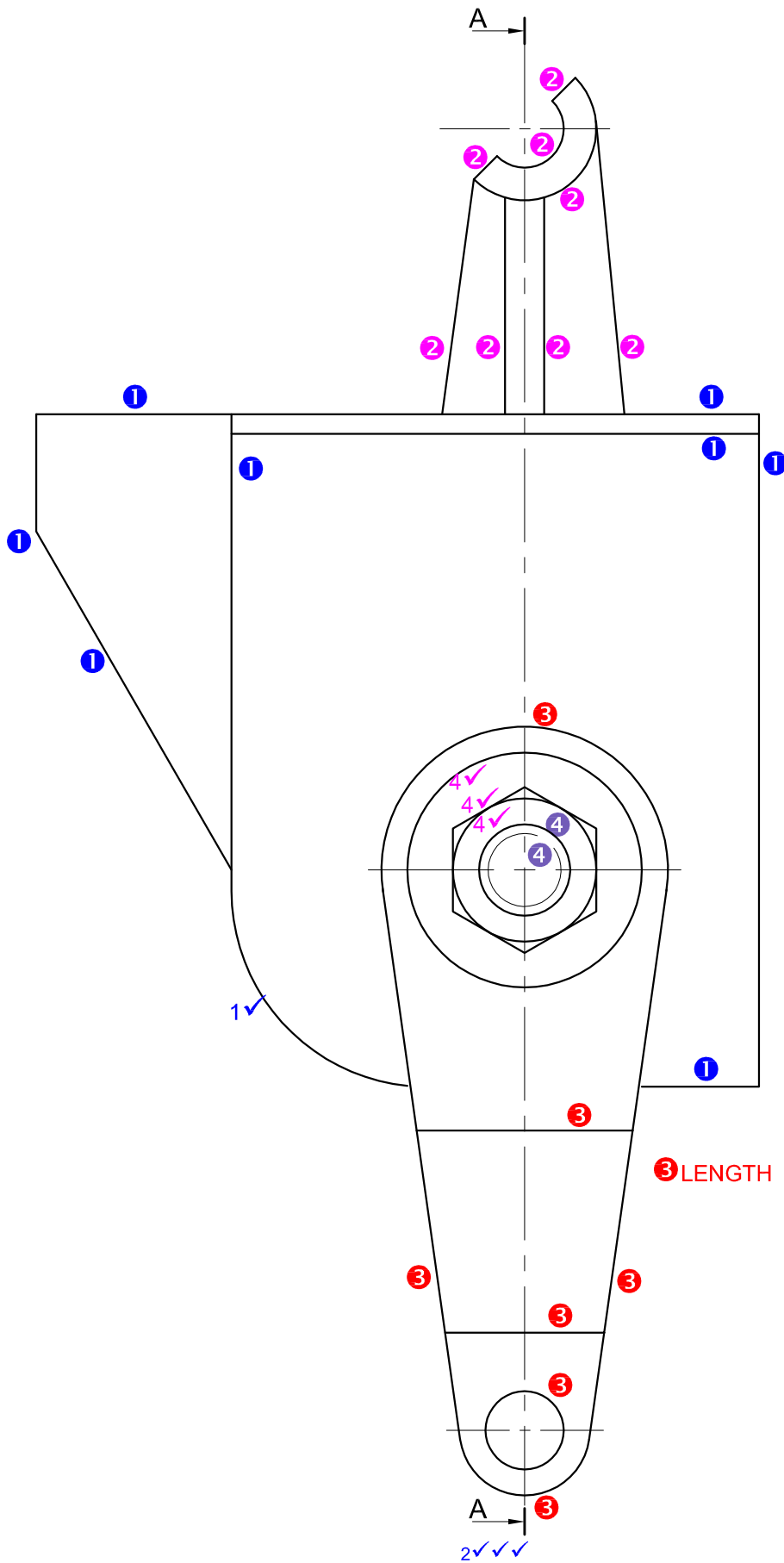


**RIGHT VIEW**

1	HOUSING	5
2	RELEASE ARM	4
3	LEVER	4
4	WASHER + M14 NUT	4
<b>SUBTOTAL</b>		<b>17</b>

**GENERAL**

1	CENTRE LINES	4
2	CUTTING PLANE	3
3	ASSEMBLY	8
<b>SUBTOTAL</b>		<b>15</b>



AN ASSEMBLY CONSTITUTES TWO OR MORE PARTS, SO ALLOCATE 1 MARK FOR EACH COMPONENT CORRECTLY ASSEMBLED (9 PARTS - 1 = 8)

PAPER 2 QUESTION 4  
GRADE 12  
NOVEMBER 2012  
MEMORANDUM