

SA's Leading Past Year

Exam Paper Portal

S T U D Y

You have Downloaded, yet Another Great Resource to assist you with your Studies 😊

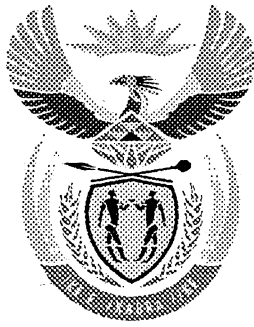
Thank You for Supporting SA Exam Papers

Your Leading Past Year Exam Paper Resource Portal

Visit us @ www.saexampapers.co.za



**SA EXAM
PAPERS**



basic education

Department:
Basic Education
REPUBLIC OF SOUTH AFRICA

**NATIONAL
SENIOR CERTIFICATE**

GRADE 12

MUSIC P2

NOVEMBER 2011

POSSIBLE ANSWERS

MARKS: 33

This memorandum consists of 12 pages.

INSTRUCTIONS AND INFORMATION

1. This question paper consists of THREE sections.
2. Answer ALL the questions.
3. Write your answers on this question paper.
4. This examination will be written while candidates are listening to a CD.
5. The music teacher of the centre must conduct the examination in the presence of the invigilator.
6. The last page of this question paper is manuscript paper that can be used for rough work. The candidate may remove this page.

INSTRUCTIONS TO THE PERSON OPERATING THE SOUND EQUIPMENT

1. The instructions for the music teacher appear in frames.
2. Each musical extract (track) must be played the number of times specified on the question paper. Allow adequate time between repeated tracks to allow candidates to write their answers before playing the next track.
3. The number of the track must be announced clearly each time before it is played.
4. A battery-powered CD player must be available in case of a power failure.

MARKING GRID

	QUESTION	TOTAL	MARKER	MODERATOR
SECTION A	1	2		
	2	8		
	SUBTOTAL	10		
SECTION B	3	6		
	4	5		
	5	2		
	SUBTOTAL	13		
SECTION C	6	10		
	SUBTOTAL	10		
	GRAND TOTAL	33		

SECTION A: AURAL

QUESTION 1

1.1 Track 1 will be played FOUR times.

Listen to the music extract which will be played four times. Make a cross (X) in the block next to the melody that shows the correct notation.

1.1.1 

1.1.2 

1.1.3  (1)

1.2 Track 2 will be played ONCE.

Listen to the music.

Make a cross (X) in the appropriate block to indicate the most suitable term for the way in which the pianist plays with some freedom of tempo.

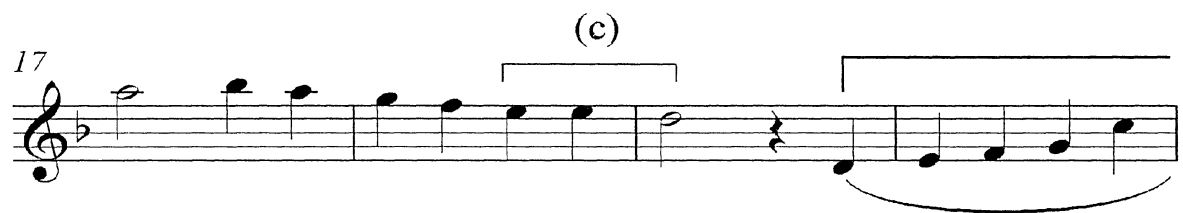
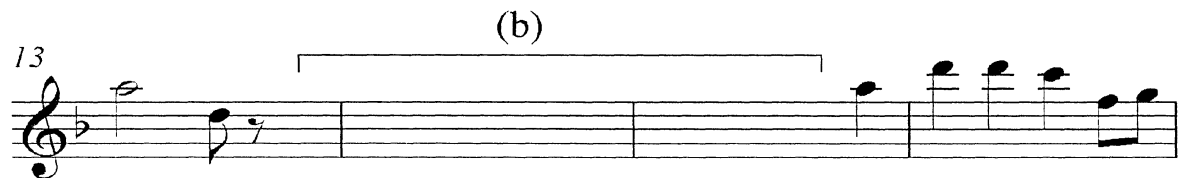
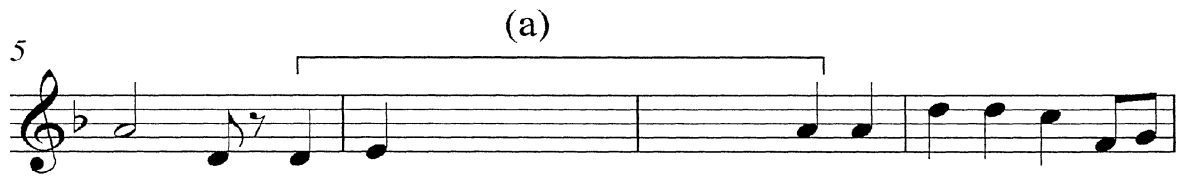
Ostinato	Accelerando	Rubato	Ritenuato
		X	

(1)
[2]

QUESTION 2: DICTATION, CADENCES, CHORDS AND INTERVALS

Read and study the questions for ONE minute.

Track 3 will be played ONCE.



2.1 Track 4 will be played TWICE.

Comment on the texture of bars 1 and 2.

Answer:

Instruments (strings) sound in octaves/Monophonic texture/All instruments play the same melody/unison.

1 mark

(1)

2.2 Track 5 will be played FOUR times.

Listen to the music from bars 3⁴-7³ and fill in the missing notes at (a) on the music score.

Answer:

$\frac{1}{2}$ mark per note = $8 \div 2 = 4$

See score on next page.

Pitch AND rhythm must be correct.

(4)

2.3 Track 6 will be played ONCE.

What difference do you hear in the string part between the passages marked (a) and (b)? The track will start in bar 3⁴.

Answer:

Melody sounds an octave ($\frac{1}{2}$ mark) higher ($\frac{1}{2}$ mark).

(1)

2.4 Track 7 will be played ONCE.

Listen to the whole piece again and answer the following questions.

2.4.1 Name the cadence at (c).

Answer:

Perfect cadence

or V - I

(1)

2.4.2 Which melodic compositional technique do you hear at the two sub-phrases at (d)?

Answer:

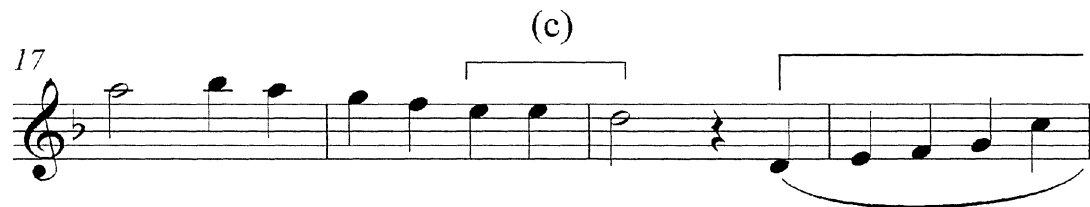
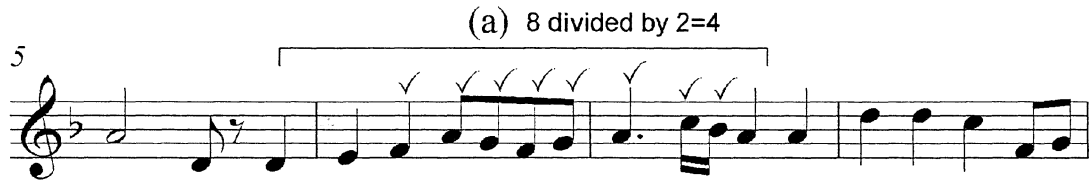
Sequence

Repetition on another pitch

(1)

[8]

NSC -



TOTAL SECTION A: 10

SECTION B: RECOGNITION OF MUSIC CONCEPTS**QUESTION 3**

Read and study the questions for ONE minute.

3.1 Track 8 will be played ONCE.

3.1.1 What type of band do you hear?

Answer: Big band / jazz band / jazz combo / swing band (1)

3.1.2 Name the solo brass instrument that you hear in this extract.

Answer: Trumpet / cornet (1)

3.1.3 Which ONE of the following statements is correct?

Make a cross (X) in the block next to the correct statement.

(a) The rhythm section plays a steady moderate swing tempo.

(b) The rhythm section plays a steady moderate ragtime tempo. (1)

3.2 Track 9 will be played ONCE.

3.2.1 Name ONE woodwind instrument and ONE brass instrument that you hear in this extract.

Answer:

Woodwind: Saxophone

Brass: Trombone

(½ mark for correct instrument, ½ mark for correct instrument family) (2)

3.2.2 Name TWO instruments that make up the rhythm section in this extract.

Answer:

Drum kit / drums OR side drum / snare drum / cymbal = 1 mark
(Electric) Bass guitar / double bass / bass = 1 mark (2)

3.3

Track 10 will be played ONCE.

3.3.1 Is this a typical example of 12-bar blues?

Answer: Yes (1)

3.3.2 Motivate your answer to QUESTION 3.3.1.

Answer:

Motivation: maximum = 4 marks

- Typical harmonic progression / I, IV & V in a specific sequence / harmonic pattern of 12 bars = 1 mark
- Slow to medium tempo = 1 mark
- Four bar phrases alternate between vocal and instrumental treatment = 1 mark
- Sentiment in text is typically melancholic = 1 mark
- [I I I I] [IV IV I I] [V IV I I or V] (3 phrases, 1 mark each) = 3 marks
- Blues scale / blue notes / lowered/flattened 3, 5 & 7 = 1 mark
- A A B form of the lyrics = 1 mark

(4)
(12 ÷ 2)
[6]

QUESTION 4

Tracks 11 and 12 will be played ONCE each.
--

4.1 Make a cross (X) in the appropriate block to indicate whether the statements below are TRUE or FALSE.

4.1.1 Both excerpts include a saxophone.

TRUE	FALSE X	(1)
------	---------	-----

4.1.2 Both excerpts include a drum kit.

TRUE	FALSE X	(1)
------	---------	-----

Tracks 11 and 12 will be played again.
--

4.1.3 Name ONE similarity between the excerpts.

Answer: (Any correct similarity can be accepted)

- Both start softly and become gradually louder.
 - Both contain the same melodic material.
 - Both contain trombones.
 - Both are in 4/4 time (common time).
 - Both are in the same key
- (1)

4.1.4 Name TWO differences between the excerpts.

Answer: (Any TWO correct differences can be accepted)

- A = Orchestral arrangement/Symphony orchestra
B = Big band swing arrangement/Jazz band
 - A = Steady 4/4
B = Swing rhythm
 - Treatment of the melody, e.g:
A = Even quavers
B = Syncopated rhythms
 - A = Original version of art music/classical music
B = Jazz version
 - A = Stately character
B = Lively character
 - A = Introduction
B = No introduction
- (2)

[5]

QUESTION 5

Read and study the question for ONE minute.

Track 13 will be played TWICE.

Which of the words or statements below are associated with this work?

Make a cross (X) in all the appropriate blocks.

A cappella	X
Starts with an introduction	-
Three voices	-
More than three voice parts	X
Mixed choir	-
Pentatonic	-
African jazz style	-

[2]

If more than two blocks were crossed, only the first two will be marked.

TOTAAL AFDELING B: 13

SECTION C: FORM

QUESTION 6

Read and study the question for ONE minute.

The second movement from *Sonata No. 5 (K283)* by WA Mozart consists of three main sections. Questions will be asked on the 1st and 3rd sections only.

Track 14 will be played ONCE.

Listen to the exposition while following the score. Only the right-hand part has been given.

Second movement from
Sonata No. 5 (K283) in G major

W.A. Mozart

Andante

6.1 Analyse the form structure by completing the table below.

Answer:

BARS	SECTION	KEY
1–4	First subject/theme/group / A	C major
5–8 ⁴	Bridge passage / link / transition	C major to G major / V key <i>(Must be complete no ½ marks.)</i>
9–13 ¹	Second subject/theme/group / B	G major
13 ² –14	Link/Codetta	G major

Sections = 4 marks

Keys = 3 marks

(7)

Track 15 will be played ONCE.

Listen to the recapitulation of the same movement.

25 *p*

27 *p*

29 *p*

31 *f* *decresc.* *p*

33 *f* *p*

35 *f* *p* *f*

37

38 *p*

38 *f* *p*

6.2 Answer the following questions:

6.2.1 Name the keys in bars 29–32.

Answer:

F major modulation to C major = 1 mark

If a candidate only wrote modulation to C major = ½ mark

(1)

6.2.2 Name TWO differences between bar 33 and bar 34.

Answer: (any TWO = 2 marks)

- Dynamics: bar 33 is *forte* and bar 34 is *piano*.
- Bar 34 sounds an octave higher than bar 33.
- Bar 34 is a rhythmic variation/embellishment of bar 33.
- Demisemiquaver rests in bar 33; in bar 34 only semiquaver rest

(2)
[10]

TOTAL SECTION C: 10
GRAND TOTAL: 33