

SA's Leading Past Year

Exam Paper Portal



You have Downloaded, yet Another Great  
Resource to assist you with your Studies 😊

Thank You for Supporting SA Exam Papers

Your Leading Past Year Exam Paper Resource Portal

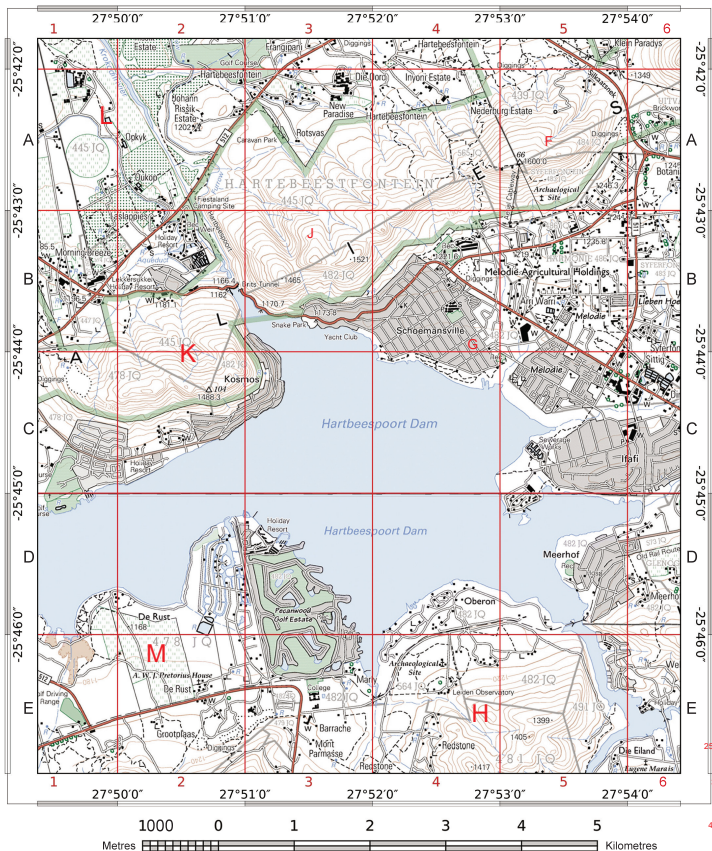
Visit us @ [www.saexampapers.co.za](http://www.saexampapers.co.za)



SA EXAM  
PAPERS

# EXTRACT FROM 2527 DB HARTBEESPOORT DAM

1:50 000



Mean magnetic declination 23°50' West of True North (July 2017).  
Mean annual change 8' westwards (July 2017 - June 2018).

CONTOUR INTERVAL 20 METRES

## REFERENCE

National Freeway; National Route	International Boundary and Beacon	Fence; Wall	Windpump; Monument
Arterial Route	Provincial Boundary	Protected Area	Communication Tower
Secondary Road; Bench Mark	Perennial River	Non-perennial River	Mine Dump; Excavation
Other Road; Bridge	Perennial Water	Non-perennial Water	Trigonometrical Station; Marine Beacon
Track and Hiking Trail	Dry Water Course	Dry Pan	Lighthouse and Marine Light
Railway; Station or Siding	Marsh and Vlei	Pipeline (above ground)	Cemetery; Grave
Other Railway; Tunnel	Water Tower; Reservoir; Water Point	Coastal Rocks	Woodland
Embankment; Cutting	Prominent Rock Outcrop	Original Farms	Orchard or Vineyard
Power Line			Recreation Ground
Buildings; Ruin			Row of Trees
Post Office; Police Station; Store			
Place of Worship; School; Hotel			

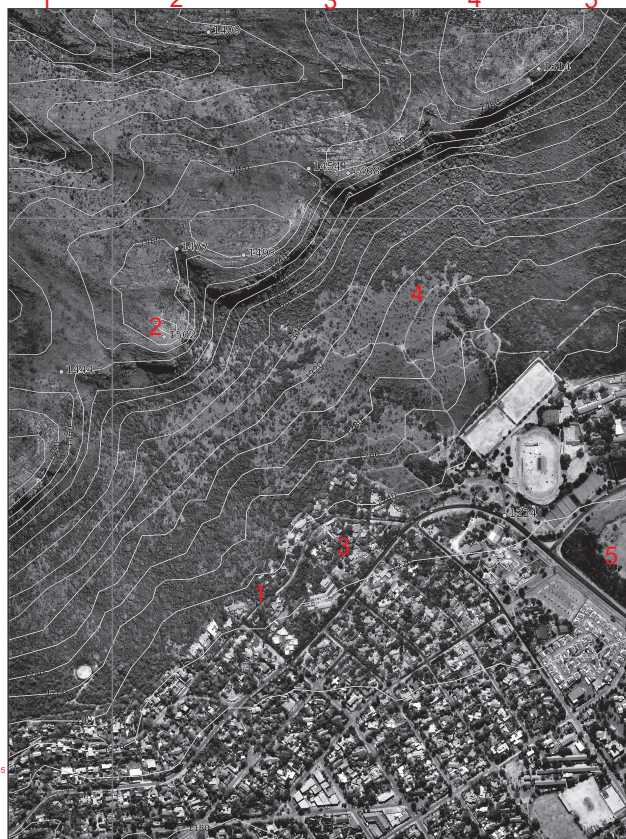
1 2 2725 DB 23 ortho-rectified 3 4 5 1: 10 000

A

B

C

D



0.2 0 0.2 0.4 0.6 0.8 1 km

1:10000 KONTOERTUSSENRUIMTE 5 METER

## VERKLARING

Nasionale Deurspad; Nasionale Roete	Internasionale Grens en Baken	Draadheining; Muur	Windpomp; Monument
Hoofpad	Provisiale Grens	Bewarings Gebied	Kommunikasietoring
Sekondêre Pad; Hoogteimerk	Standhoudende Rivier	Nie-standhoudende Rivier	Mynhoop; Uitgraving
Ander Pad; Brug	Nie-standhoudende Water	Droë Loop	Palibaken; Sievevaarbak
Spoorweg; Stasie of Sylyn	Droë Pan	Mooras en Vlei	Vuurtooring en Seevaartig
Ander Spoerweg; Tunnel	Pylym (bo die grond)	Waternoring; Reservoir; Waterpunt	Begraafplaas; Graf
Oopruiling; Deurgang	Kuslynroete	Prominente Klipbank	Erosie; Sand
Kraglyn			Beboste Gebied
Beboude Gebied (Hof, Lae Digtheid)			Bewerkte Land
Geboue; Mursale			Boord of Wingerd
Poskantoor; Polisieostasie; Winkel			Ontspanningsterrein
Plek van Aanbidding; Skool; Hotel			Rye Bone
			Oorspronklike Plase