

SA's Leading Past Year

Exam Paper Portal



You have Downloaded, yet Another Great Resource to assist you with your Studies 😊

Thank You for Supporting SA Exam Papers

Your Leading Past Year Exam Paper Resource Portal

Visit us @ www.saexampapers.co.za

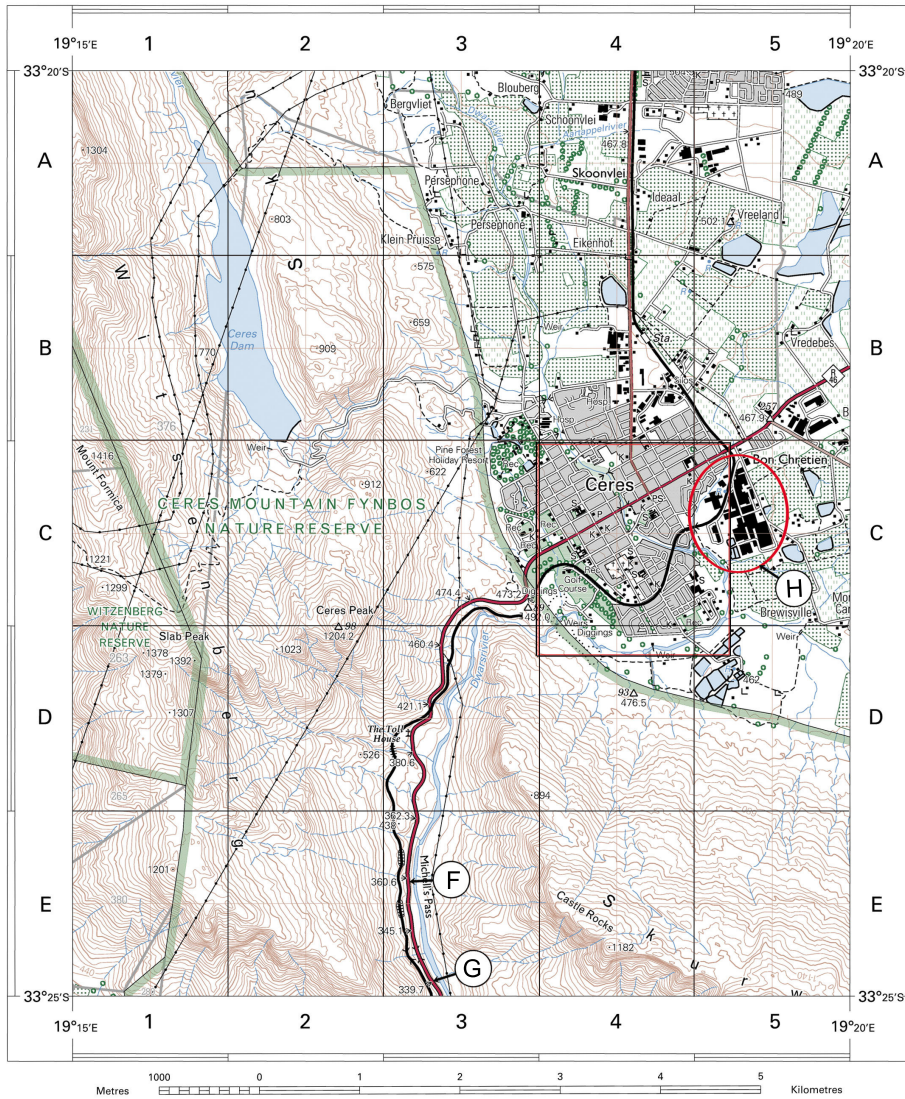


EXTRACT FROM 3319AD CERES

1:50 000

EXTRACT FROM 3319AD 12 Orthophoto

1:10 000



Mean magnetic declination 24°38' West of True North (October 2014).
Mean annual change 5' westwards (Oct. 2014 - Sept. 2015).

CONTOUR INTERVAL 20 METRES

REFERENCE

National Freeway; National Route.....	International Boundary and Beacon.....	Fence; Wall.....	Windpump; Monument.....
Arterial Route.....	Provincial Boundary.....	Communication Tower.....	Mine Dump; Excavation.....
Main Road.....	Protected Area.....	Trigonometrical Station; Marine Beacon.....	Lighthouse and Marine Light.....
Secondary Road; Bench Mark.....	Perennial River.....	Cemetery; Grave.....	Erosion; Sand.....
Other Road; Bridge.....	Perennial Water.....	Woodland.....	Cultivated Land.....
Track and Hiking Trail.....	Non-perennial River.....	Orchard or Vineyard.....	Recreation Ground.....
Railway; Station or Sliding.....	Non-perennial Water.....	Row of Trees.....	Original Farms.....
Other Railway; Tunnel.....	Dry Water Course.....		
Embankment; Cutting.....	Dry Pan.....		
Power Line.....	Marsh and Vlei.....		
Built-up Area (High, Low Density).....	Pipeline (above ground).....		
Buildings; Ruin.....	Water Tower; Reservoir; Water Point.....		
Post Office; Police Station; Store.....	Coastal Rocks.....		
Place of Worship; School; Hotel.....	Prominent Rock Outcrop.....		



1:10000 KONTOERTUSSEN RUIMTE 5 METER

VERKLARING

Nasionale Deurpad; Nasionale Roete.....	Internasionale Grens en Baken.....	Drasheining; Muur.....
Hoofverkeersroete.....	Provisiale Grens.....	Windpomp; Monument.....
Hoofpad.....	Bewarings Gebied.....	Kommunikasietoring.....
Sekondêre Pad; Hoogtemerk.....	Standhoudende Rivier.....	Mynhoop; Uitgraving.....
Ander Pad; Brug.....	Standhoudende Water.....	Peilbaken; Seevaarbaken.....
Dooweg Pad en Voetslaanpad.....	Nie-standhoudende Rivier.....	Vuurtorring en Seevaartlig.....
Spoorweg; Stasie of Sylyn.....	Nie-standhoudende Water.....	Begraafplaat; Graf.....
Ander Spoorweg; Tunnel.....	Droë Loop.....	Erosie; Sand.....
Opvulling; Deurgrawing.....	Pylyn (bo die grond).....	Beboste Gebied.....
Kraglyn.....	Watertoring; Reservoir; Waterpunt.....	Bewerkte Land.....
Beboude Gebied (Hoë, Laë Digtheid).....	Kuslynrotse.....	Boord of Wingerd.....
Geboue; Mursale.....	Prominente Klipbank.....	Ontspanningsterrein.....
Poskantoor; Polisie-stasie; Winkel.....		Rye Bome.....
Plek van Aanbidding; Skool; Hotel.....		Oorspronklike Plaat.....