

# SA's Leading Past Year

## Exam Paper Portal



You have Downloaded, yet Another Great Resource to assist you with your Studies 😊

Thank You for Supporting SA Exam Papers

Your Leading Past Year Exam Paper Resource Portal

Visit us @ [www.saexampapers.co.za](http://www.saexampapers.co.za)



# SA EXAM PAPERS

SA EXAM PAPERS

Proudly South African



**FOLLOW THESE INSTRUCTIONS CAREFULLY.**

1. Clearly write your SURNAME and NAME(s) in the space provided. ONE letter per block.
2. Answer ALL the questions in the spaces provided.
3. No pages may be torn from this answer book.
4. Read the instructions which may be given in each examination paper.
5. Candidates may not retain an answer book or remove it from the examination room.
6. Answers MUST be written in black/blue ink as distinctly as possible. Pencils may be used for drawing graphs.
7. Do not write in the margins.
8. If you require additional space for your answers:
  - 8.1 Use the additional space provided at the end of the answer book.
  - 8.2 When answering a question in additional space, indicate clearly the question number in the column on the left-hand side.
9. Draw a neat line through any work that must not be marked.

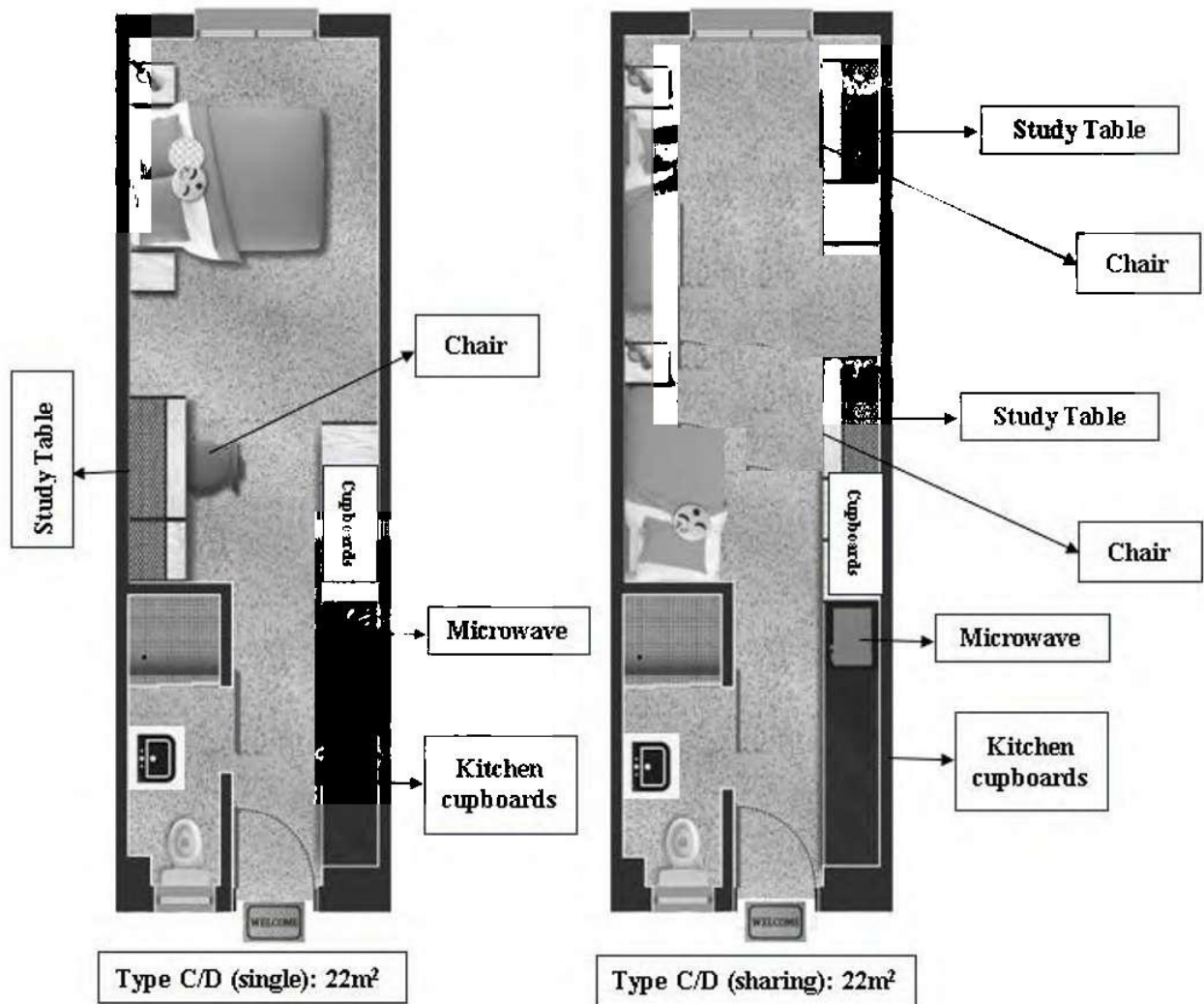


**QUESTION 1**



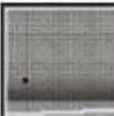

1.1	Solution	Marks
1.1.1		(2)
1.1.2		(2)
1.1.3		(2)
1.1.4		(2)
1.1.5		(2)



## 1.2 ANNEXURE A



## KEY

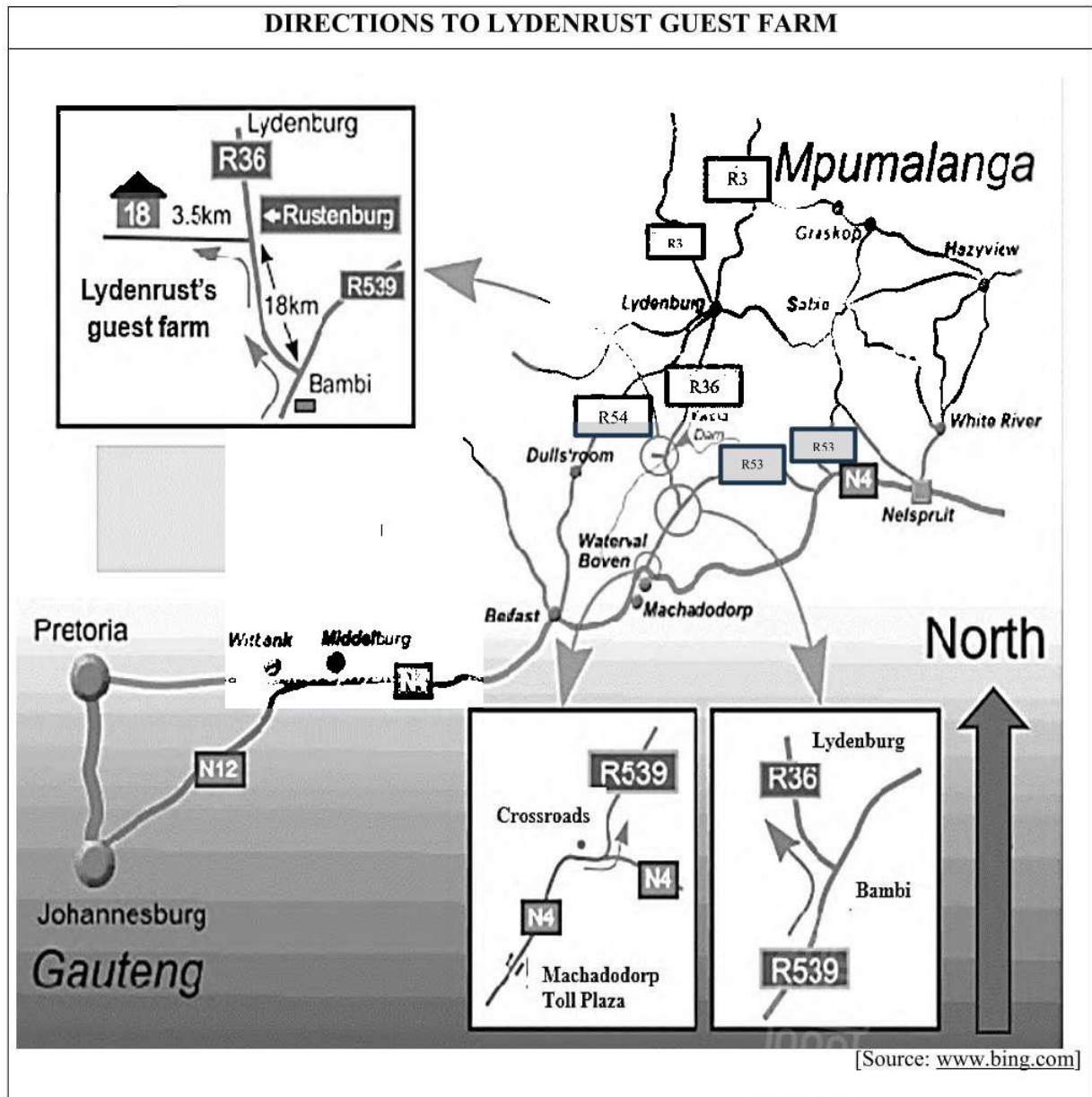
Toilet		Basin	
Shower		Door	

[Adapted from: [www.campuscentral.com](http://www.campuscentral.com)]

	<b>Solution</b>	<b>Marks</b>
1.2.1		(2)
1.2.2		(2)
1.2.3		(2)
1.2.4		(2)
1.2.5		(2)
1.3.1		(2)
1.3.2		(2)
1.3.3		(2)
1.3.4		(2)
		<b>[28]</b>



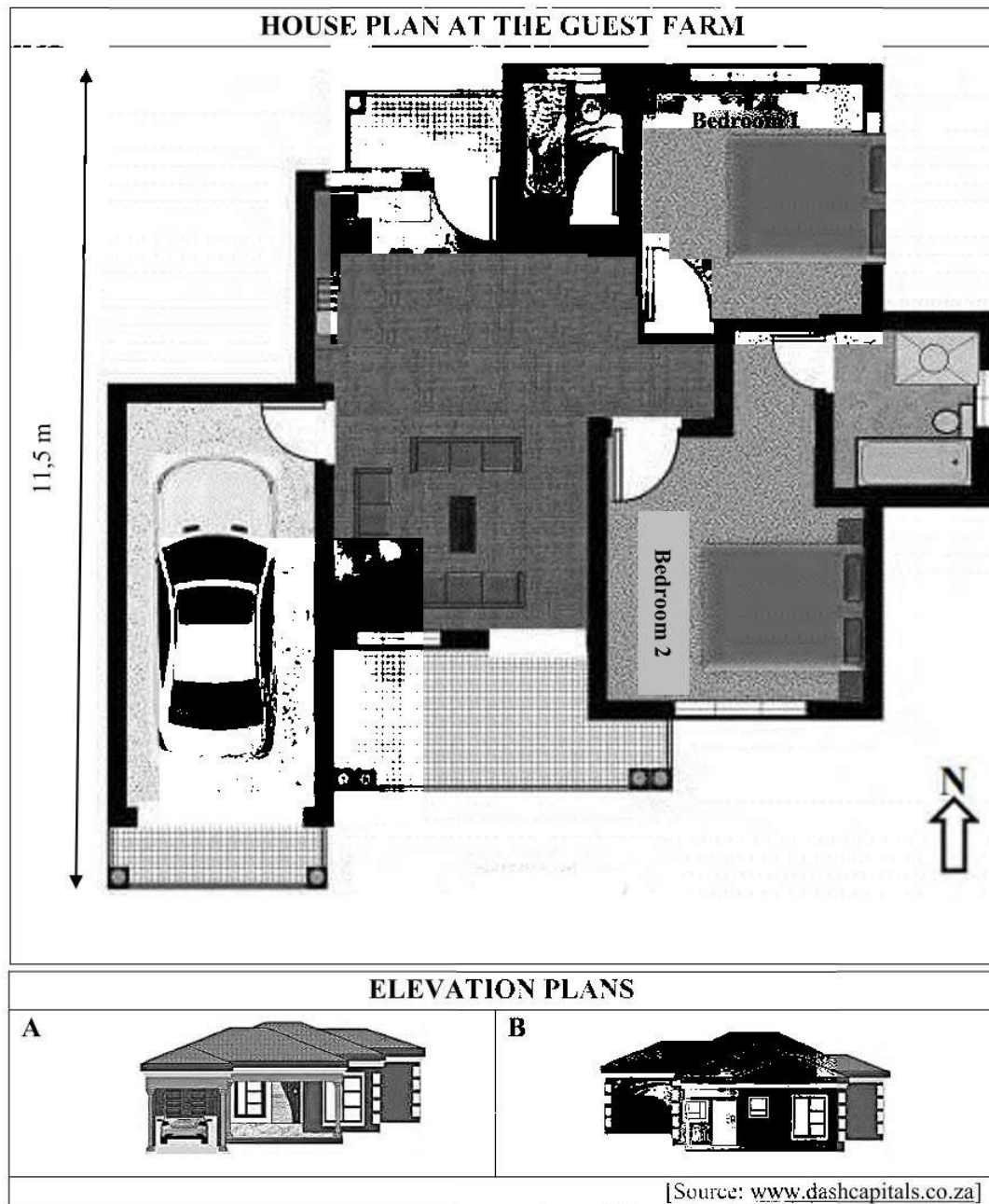


**QUESTION 2****2.1 ANNEXURE B**

2.1	Solution	Marks
2.1.1		(2)
2.1.2		(2)
2.1.3		(3)
2.1.4		(2)
2.1.5		(2)





**2.2 ANNEXURE C**

2.2	Solution	Marks
2.2.1		(2)
2.2.2		(2)
2.2.3		(4)
2.2.4		(2)
2.2.5 (a)		(2)
2.2.5 (b)		(2)
		[25]



**QUESTION 3**

3.1	Solution	Marks
3.1.1		(2)
3.1.2		(2)
3.1.3		(9)
3.1.4		(3)



3.2	Solution	Marks
3.2.1		(2)
3.2.2		(2)
3.2.3		(4)
3.2.4		(2)
		<b>[26]</b>



**QUESTION 4**

4.1	Solution	Marks
4.1.1		(3)
4.1.2		(3)
4.1.3		(3)
4.1.4		(3)
4.1.5 (a)		(3)
4.1.5 (b)		(3)



4.2	Solution	Marks
4.2.1	<div></div> <div></div> <div></div> <div></div> <div></div> <div></div> <div></div> <div></div> <div></div> <div></div> <div></div> <div></div> <div></div> <div></div> <div></div> <div></div> <div></div> <div></div> <div></div> <div></div>	(6)
4.2.2	<div></div> <div></div> <div></div> <div></div> <div></div> <div></div> <div></div> <div></div> <div></div> <div></div>	(3)
4.2.3 (a)	<div></div> <div></div> <div></div> <div></div>	(2)





4.2.3 (b)		
		[38]



**QUESTION 5**

5.1	Solution	Marks
5.1.1		(2)
5.1.2		(3)
5.1.3		(2)
5.1.4		(2)
5.1.5		(2)
5.1.6 (a)		(2)
5.1.6 (b)		(6)



	Solution	Marks
5.2		(5)
5.3.1		(5)
5.3.2		(4)
		[33]

TOTAL: 150



